

**RESOLUTION NO. R-024-067**

**THE BOARD OF COUNTY COMMISSIONERS  
OF THE COUNTY OF DOUGLAS, COLORADO**

**A RESOLUTION APPROVING THE TEMPORARY ROAD CLOSURE OF OMEGA  
CIRCLE BETWEEN 13647 OMEGA CIRCLE AND 13654 OMEGA CIRCLE**

**WHEREAS**, Douglas County PW Engineering staff is requesting one (1) – 90-day temporary road closure of Omega Circle, Littleton, CO between 13647 Omega Circle and 13654 Omega Circle. The closure will allow for the completion of the Acres Green – Omega Circle Drainage Repair Project, Douglas County Project Number SP2024-006; and

**WHEREAS**, Omega Circle is a County-maintained roadway; and

**WHEREAS**, the Board of County Commissioners (the “Board”) has the authority to temporarily prohibit the operation of vehicles upon roads within its jurisdiction, pursuant to sections 42-4-106(1) and (6), C.R.S.; and

**WHEREAS**, the temporary road closure of Omega Circle will be needed for a single 90-day closure in calendar year 2024, to occur between May 21, 2024 and December 31, 2024, in coordination with the contractor to complete the work and shall be weather dependent; and

**WHEREAS**, Douglas County PW Engineering staff has prepared detour and signage plans for the closure of Omega Circle; now, therefore,

**BE IT RESOLVED**, by the **BOARD OF COUNTY COMMISSIONERS OF THE COUNTY OF DOUGLAS, STATE OF COLORADO**, hereby authorizes the approval of the temporary road closure of Omega Circle between 13647 Omega Circle and 1654 Omega Circle for one (1) – 90-day closure between May 21, 2024 and December 31, 2024.

**BE IT FURTHER RESOLVED** that a signed detour route with approved warning signs and barricades shall be erected at designated locations, as shown on the attached Exhibit A, prior to the temporary closure authorized herein.

**BE IT FURTHER RESOLVED** that such warning signs and barricades shall be removed, and such road shall be reopened upon expiration of the temporary closure approved herein, or at such earlier time as determined by PW Engineering staff.

**PASSED AND ADOPTED** this **21st of May 2024**, in Castle Rock, Douglas County, Colorado.

**THE BOARD OF COUNTY COMMISSIONERS  
OF THE COUNTY OF DOUGLAS, COLORADO**

By: 

DocuSigned by:  
*Geo. P. Teal*  
E5CD14592431405

Geo. P. Teal

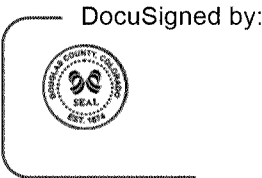
, Chair

ATTEST: 

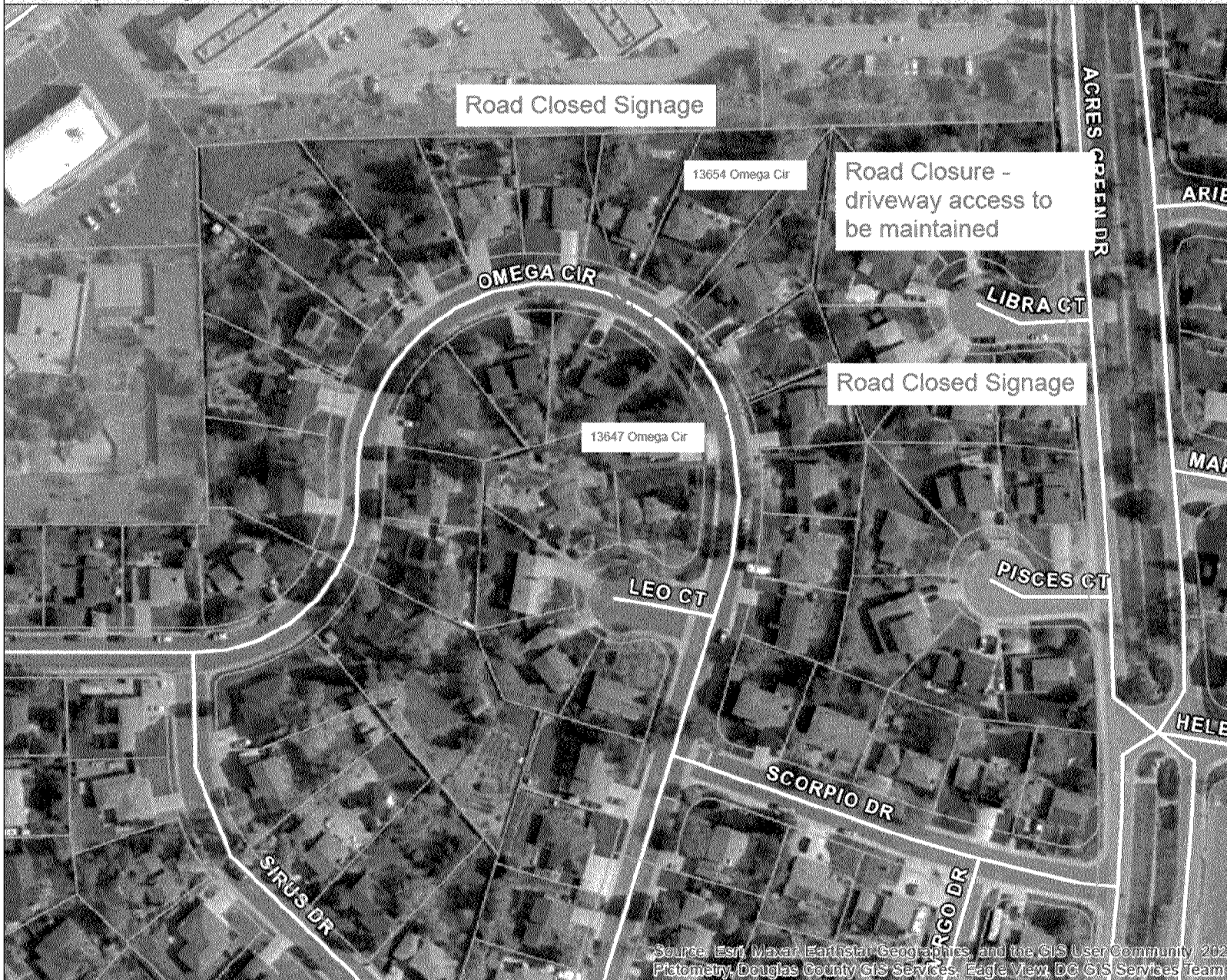
DocuSigned by:  
*Hayley Hall*  
466E3E32F08240B

Hayley Hall

, Clerk to the Board



## 90 Day Temp Closure



Source: Esri, Maxar, Earthstar Geographics, and the GIS User Community 2021  
Pictometry, Douglas County GIS Services, Eagle View, DC GIS Services Team

### DISCLAIMER:

All data and information ("Products") contained herein are for informational purposes only. Although such Products are believed to be accurate at the time of printing, Douglas County does not warrant that such Products are error-free. Douglas County provides these Products on an "as is" basis without warranty of any kind, either express or implied, including, but not limited to, warranties of title or implied warranties of merchantability or fitness for a particular purpose. Douglas County shall not be liable for any direct, indirect, incidental, special or consequential damages arising out of the use of such Products, or the inability to use such Products or out of any breach of any warranty. The user acknowledges and agrees that the use of such Products is at the sole risk of the user. General questions about this or any other Douglas County GIS products, including errors, omissions, corrections and/or updates should be directed to the Douglas County GIS Division at (303) 660-7416.

Douglas County GIS Division  
Philip S. Miller Bldg., 100 Third St.  
Castle Rock, Colorado 80104