



Jenna J. Slabaugh  
Paralegal

303-858-1800  
jslabaugh@wbapc.com

December 15, 2022

**VIA ELECTRONIC SUBMISSION  
AND ELECTRONIC MAIL**

Division of Local Government  
*E-filed via [www.dola.colorado.gov/e-filing](http://www.dola.colorado.gov/e-filing)*

Douglas County Clerk and Recorder  
301 Wilcox Street  
Castle Rock, CO 80104  
recording@douglas.co.us

Douglas County Assessor  
301 Wilcox Street  
Castle Rock, CO 80104  
assessors@douglas.co.us

**Re: Dawson Trails Metropolitan District No. 7 (f/k/a Westfield Metropolitan District No. 2) (LGID#:18078) Map Filing Pursuant to §32-1-306, C.R.S. – Change in Boundaries**

To Whom It May Concern:

Section 32-1-306, C.R.S., requires special districts to provide a current, accurate map of their boundaries to the Division of Local Government, County Clerk and Recorder and County Assessor by January 1 of each year. A copy of the updated map for the above-referenced District was electronically submitted on the Division's website and is also enclosed for your convenience.

Should you have any questions, please do not hesitate to contact me.

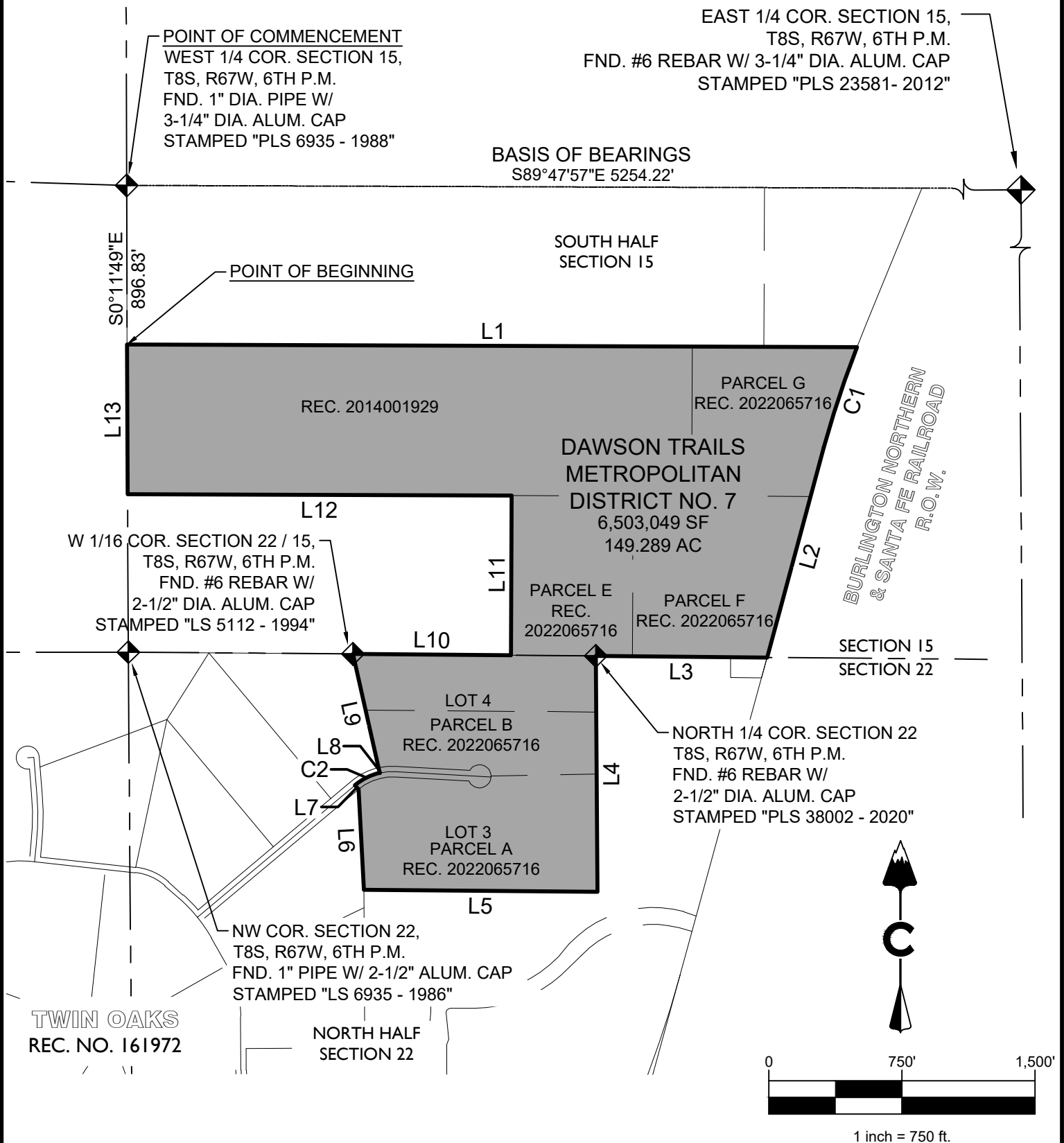
Sincerely,

WHITE BEAR ANKELE TANAKA & WALDRON  
Attorneys at Law

Jenna J. Slabaugh, Paralegal

Enclosure  
2344.0024: 1278900

# EXHIBIT



NOTE: THIS DOES NOT REPRESENT A MONUMENTED SURVEY. IT IS INTENDED ONLY TO DEPICT THE ATTACHED DESCRIPTION

PROJECT: 20-224  
 DATE: 12/8/2022  
 DR: CT  
 QA: JCA  
 SHEET 3 OF 4



CORE CONSULTANTS, INC.  
 3473 SOUTH BROADWAY  
 ENGLEWOOD, CO 80113  
 303.703.4444  
 LIVEYOURCORE.COM

DAWSON TRAILS METROPOLITAN DISTRICT NO. 7

# EXHIBIT

LINE TABLE		
LINE #	LENGTH	DIRECTION
L1	4111.91'	S 89°48'26" E
L2	1223.49'	S 15°09'02" W
L3	963.93'	N 89°30'21" W
L4	1329.37'	S 0°20'29" E
L5	1315.66'	N 89°30'19" W
L6	567.45'	N 3°03'12" W
L7	30.00'	N 39°55'38" W
L8	30.00'	N 12°39'22" W
L9	657.67'	N 12°39'22" W
L10	890.07'	S 89°31'22" E
L11	900.14'	N 0°11'34" E
L12	2162.81'	N 89°48'26" W
L13	842.74'	N 0°11'49" W

CURVE TABLE					
CURVE #	LENGTH	RADIUS	DELTA	CHORD BEARING	CHORD LENGTH
C1	597.87'	6351.10'	5°23'37"	S18°13'44"W	597.65'
C2	156.74'	329.30'	27°16'16"	N63°42'30"E	155.26'

NOTE: THIS DOES NOT REPRESENT A MONUMENTED SURVEY. IT IS INTENDED ONLY TO DEPICT THE ATTACHED DESCRIPTION

PROJECT: 20-224  
 DATE: 12/8/2022  
 DR: CT  
 QA: JCA  
 SHEET 4 OF 4



CORE CONSULTANTS, INC.  
 3473 SOUTH BROADWAY  
 ENGLEWOOD, CO 80113  
 303.703.4444  
 LIVEYOURCORE.COM

DAWSON TRAILS METROPOLITAN  
 DISTRICT NO. 7