



Jenna J. Slabaugh
Paralegal

303-858-1800
jslabaugh@wbapc.com

December 15, 2022

**VIA ELECTRONIC SUBMISSION
AND ELECTRONIC MAIL**

Division of Local Government
E-filed via www.dola.colorado.gov/e-filing

Douglas County Clerk and Recorder
301 Wilcox Street
Castle Rock, CO 80104
recording@douglas.co.us

Douglas County Assessor
301 Wilcox Street
Castle Rock, CO 80104
assessors@douglas.co.us

Re: Dawson Trails Metropolitan District No. 6 (f/k/a Westfield Metropolitan District No. 1 (LGID#:18077) Map Filing Pursuant to §32-1-306, C.R.S. – Change in Boundaries

To Whom It May Concern:

Section 32-1-306, C.R.S., requires special districts to provide a current, accurate map of their boundaries to the Division of Local Government, County Clerk and Recorder and County Assessor by January 1 of each year. A copy of the updated map for the above-referenced District was electronically submitted on the Division's website and is also enclosed for your convenience.

Should you have any questions, please do not hesitate to contact me.

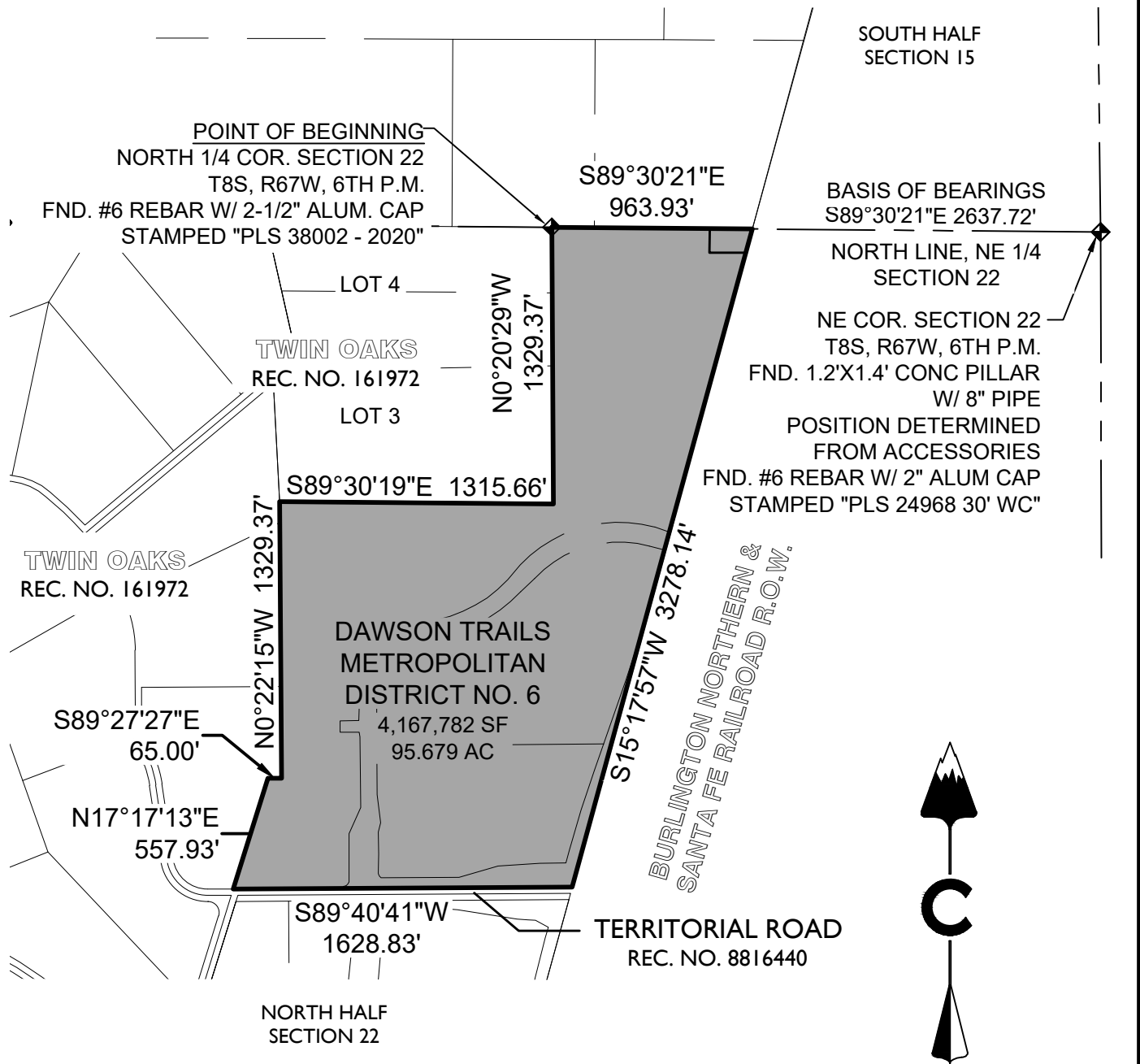
Sincerely,

WHITE BEAR ANKELE TANAKA & WALDRON
Attorneys at Law

Jenna J. Slabaugh, Paralegal

Enclosure
2343.0024: 1278898

EXHIBIT



NOTE: THIS DOES NOT REPRESENT A MONUMENTED SURVEY. IT IS INTENDED ONLY TO DEPICT THE ATTACHED DESCRIPTION

PROJECT: 20-224
 DATE: 12/8/2022
 DR: CT
 QA: JCA
 SHEET 3 OF 3

CORE

CORE CONSULTANTS, INC.
 3473 SOUTH BROADWAY
 ENGLEWOOD, CO 80113
 303.703.4444
 LIVEYOURCORE.COM

DAWSON TRAILS METROPOLITAN
 DISTRICT NO. 6