

WILLIAM P. ANKELE, JR.  
JENNIFER GRUBER TANAKA  
CLINT C. WALDRON  
KRISTIN BOWERS TOMPKINS  
ROBERT G. ROGERS  
BLAIR M. DICKHONER

OF COUNSEL:  
KRISTEN D. BEAR  
K. SEAN ALLEN  
GEORGE M. ROWLEY



ZACHARY P. WHITE  
TRISHA K. HARRIS  
HEATHER L. HARTUNG  
MEGAN J. MURPHY  
EVE M. GRINA  
ALLISON C. FOGG  
JENNIFER C. ROGERS  
LAURA S. HEINRICH  
CHRISTOPHER T. MCMICHAEL  
AUDREY G. JOHNSON

December 23, 2019

**VIA ELECTRONIC SUBMISSION  
AND ELECTRONIC MAIL**

Division of Local Government  
*E-filed via [www.dola.colorado.gov/e-filing](http://www.dola.colorado.gov/e-filing)*

Douglas County Clerk and Recorder  
301 Wilcox Street  
Castle Rock, CO 80104  
[recording@douglas.co.us](mailto:recording@douglas.co.us)

Douglas County Assessor  
301 Wilcox Street  
Castle Rock, CO 80104  
[assessors@douglas.co.us](mailto:assessors@douglas.co.us)

**Re: Two Bridges Metropolitan District (LGID#:66197)  
Map Filing Pursuant to §32-1-306, C.R.S. – Change in Boundaries**

To Whom It May Concern:

Section 32-1-306, C.R.S., requires special districts to provide a current, accurate map of their boundaries to the Division of Local Government (the “**Division**”), County Clerk and Recorder and County Assessor by January 1 of each year. A copy of the updated map for the above-referenced District was electronically submitted on the Division’s website and is also enclosed for your convenience.

Should you have any questions, please do not hesitate to contact me.

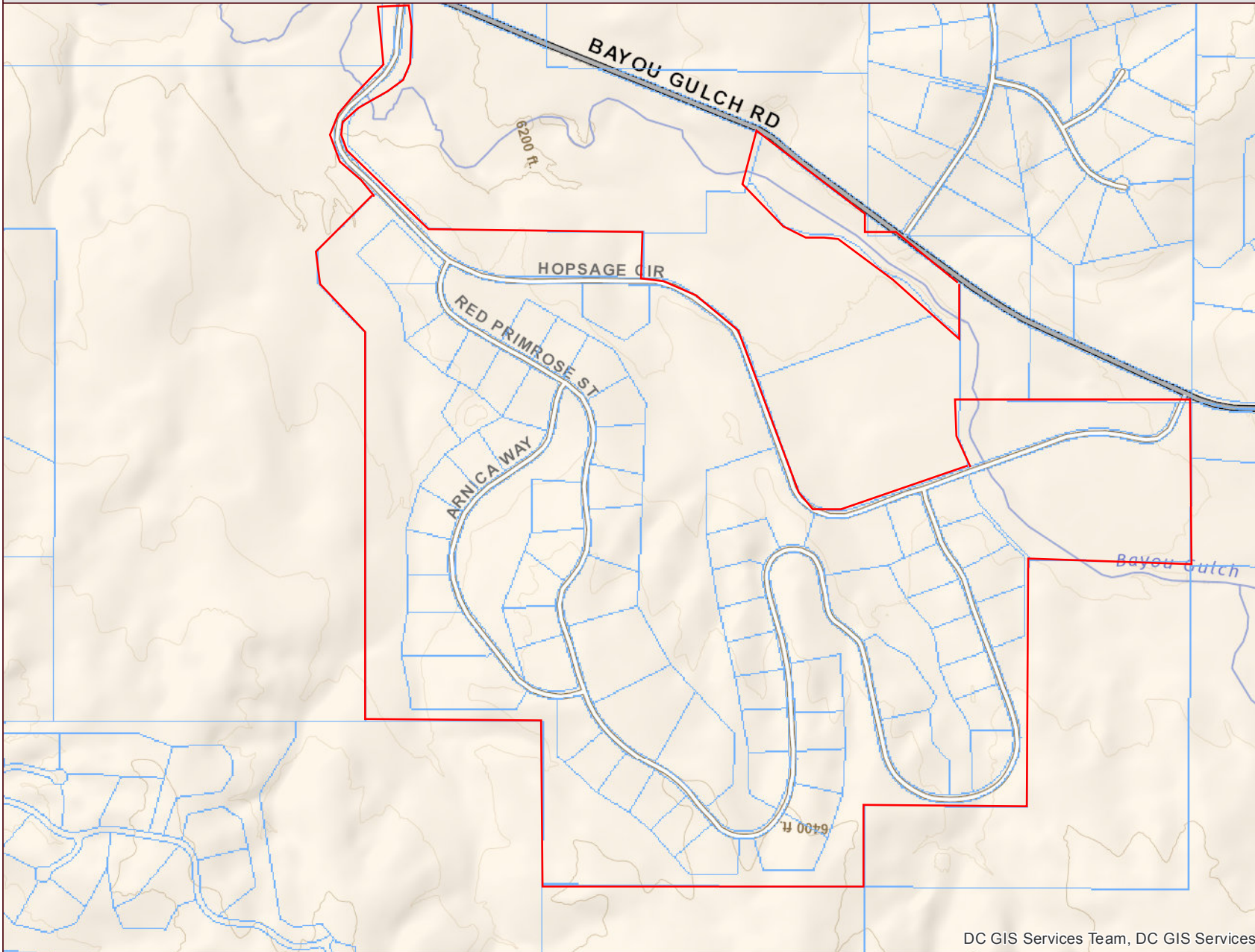
Sincerely,

WHITE BEAR ANKELE TANAKA & WALDRON  
Attorneys at Law

Kaylin C. Hicks, Paralegal

Enclosure  
2158.0024: 1014300

# 2019 Map



## Real Property


 Parcel

## Public Land Survey System

 Township

 Section

## General Features

 School

 Private Road

 Railroad

DC GIS Services Team, DC GIS Services

### DISCLAIMER:

All data and information ("Products") contained herein are for informational purposes only. Although such Products are believed to be accurate at the time of printing, Douglas County does not warrant that such Products are error free. Douglas County provides these Products on an "as is" basis without warranties of any kind, either express or implied, including, but not limited to, warranties of title or implied warranties of merchantability or fitness for a particular purpose. Douglas County shall not be liable for any direct, indirect, incidental, special or consequential damages arising out of the use of such Products, or the inability to use such Products or out of any breach of any warranty. The user acknowledges and agrees that the use of such Products is at the sole risk of the user. General questions about this or any other Douglas County GIS products, including errors, omissions, corrections and/or updates should be directed to the Douglas County GIS Division at (303) 660-7416.

Douglas County GIS Division  
Philip S. Miller Bldg., 100 Third St.  
Castle Rock, Colorado 80104

