

WILLIAM P. ANKELE, JR.
JENNIFER GRUBER TANAKA
CLINT C. WALDRON
KRISTIN BOWERS TOMPKINS
ROBERT G. ROGERS
BLAIR M. DICKHONER

OF COUNSEL:
KRISTEN D. BEAR
K. SEAN ALLEN
GEORGE M. ROWLEY



ZACHARY P. WHITE
TRISHA K. HARRIS
HEATHER L. HARTUNG
MEGAN J. MURPHY
EVE M. GRINA
ALLISON C. FOGG
JENNIFER C. ROGERS
LAURA S. HEINRICH
CHRISTOPHER T. MCMICHAEL
AUDREY G. JOHNSON

December 20, 2019

**VIA ELECTRONIC SUBMISSION
AND ELECTRONIC MAIL**

Division of Local Government
E-filed via www.dola.colorado.gov/e-filing

Douglas County Clerk and Recorder
301 Wilcox Street
Castle Rock, CO 80104
recording@douglas.co.us

Douglas County Assessor
301 Wilcox Street
Castle Rock, CO 80104
assessors@douglas.co.us

**Re: Trails At Crowfoot Metropolitan District No. 2 (LGID#:66687)
Map Filing Pursuant to §32-1-306, C.R.S. – Change in Boundaries**

To Whom It May Concern:

Section 32-1-306, C.R.S., requires special districts to provide a current, accurate map of their boundaries to the Division of Local Government (the “**Division**”), County Clerk and Recorder and County Assessor by January 1 of each year. A copy of the updated map for the above-referenced District was electronically submitted on the Division’s website and is also enclosed for your convenience.

Should you have any questions, please do not hesitate to contact me.

Sincerely,

WHITE BEAR ANKELE TANAKA & WALDRON
Attorneys at Law

Kaylin C. Hicks, Paralegal

Enclosure
1459.0024:

HESS RANCH METROPOLITAN DISTRICT NO. 2

A PART OF SECTION 9, TOWNSHIP 7 SOUTH, RANGE 66 WEST OF THE 6th PRINCIPAL MERIDIAN,
TOWN OF PARKER, COUNTY OF DOUGLAS, STATE OF COLORADO
SHEET 1 OF 1

HESS RANCH METROPOLITAN DISTRICT NO. 2
PART OF SECTION 9, TOWNSHIP 7 SOUTH, RANGE 66 WEST, 6TH P.M.

LEGAL DESCRIPTION

A PARCEL OF LAND BEING A PART OF SECTION 9, TOWNSHIP 7 SOUTH, RANGE 66 WEST OF THE 6TH PRINCIPAL MERIDIAN, TOWN OF PARKER, COUNTY OF DOUGLAS, STATE OF COLORADO, BEING MORE PARTICULARLY DESCRIBED AS FOLLOWS:

TRACTS D, E, F, H AND I, TRAILS AT CROWFOOT FILING NO. 1, RECORDED AT RECEPTION NO. 2018065116 IN THE RECORDS OF THE DOUGLAS COUNTY, COLORADO CLERK AND RECORDER;

TOGETHER WITH

LOTS 1 THRU 14, INCLUSIVE, BLOCK 1;
LOTS 1 THRU 4, INCLUSIVE, BLOCK 2;
LOTS 1 THRU 15, INCLUSIVE, BLOCK 3;
LOTS 1 THRU 10, INCLUSIVE, BLOCK 4;
LOTS 1 THRU 17, INCLUSIVE, BLOCK 5;
LOTS 1 THRU 14, INCLUSIVE, BLOCK 6;
LOTS 1 THRU 7, INCLUSIVE, BLOCK 7;
LOTS 1 THRU 9, INCLUSIVE, BLOCK 8;
TRACT A, TRAILS AT CROWFOOT FILING NO. 4, RECORDED AT RECEPTION NO. 2019000190 IN THE RECORDS OF THE DOUGLAS COUNTY, COLORADO CLERK AND RECORDER;

TOGETHER WITH

LOTS 1 THRU 9, INCLUSIVE, BLOCK 1;
LOTS 1 THRU 7, INCLUSIVE, BLOCK 2;
LOTS 1 THRU 18, INCLUSIVE, BLOCK 3;
LOTS 1 THRU 20, INCLUSIVE, BLOCK 4;
LOTS 1 THRU 6, INCLUSIVE, BLOCK 5;
LOTS 1 THRU 17, INCLUSIVE, BLOCK 6, TRAILS AT CROWFOOT FILING NO. 5, RECORDED AT RECEPTION NO. 2019000197 IN THE RECORDS OF THE DOUGLAS COUNTY, COLORADO CLERK AND RECORDER;

TOGETHER WITH

LOTS 1 THRU 5, INCLUSIVE, BLOCK 1;
LOTS 1 THRU 14, INCLUSIVE, BLOCK 2;
LOTS 1 THRU 8, INCLUSIVE, BLOCK 3;
LOTS 1 THRU 6, INCLUSIVE, BLOCK 4;
LOTS 1 THRU 9, INCLUSIVE, BLOCK 5;
LOTS 1 THRU 9, INCLUSIVE, BLOCK 6;
TRACTS B AND C, TRAILS AT CROWFOOT FILING NO. 6, RECORDED AT RECEPTION NO. 2018065264 IN THE RECORDS OF THE DOUGLAS COUNTY, COLORADO CLERK AND RECORDER;

TOGETHER WITH

LOTS 1 THRU 14, INCLUSIVE, BLOCK 1;
LOTS 1 THRU 19, INCLUSIVE, BLOCK 2;
LOTS 1 THRU 6, INCLUSIVE, BLOCK 3;
LOTS 1 THRU 10, INCLUSIVE, BLOCK 4;
TRACTS A AND B, TRAILS AT CROWFOOT FILING NO. 7, RECORDED AT RECEPTION NO. 2018065262 IN THE RECORDS OF THE DOUGLAS COUNTY, COLORADO CLERK AND RECORDER;

TOGETHER WITH

LOTS 1 THRU 20, INCLUSIVE, BLOCK 1;
LOTS 1 THRU 11, INCLUSIVE, BLOCK 2, TRAILS AT CROWFOOT FILING NO. 8, RECORDED AT RECEPTION NO. 2019065282 IN THE RECORDS OF THE DOUGLAS COUNTY, COLORADO CLERK AND RECORDER;

TOGETHER WITH

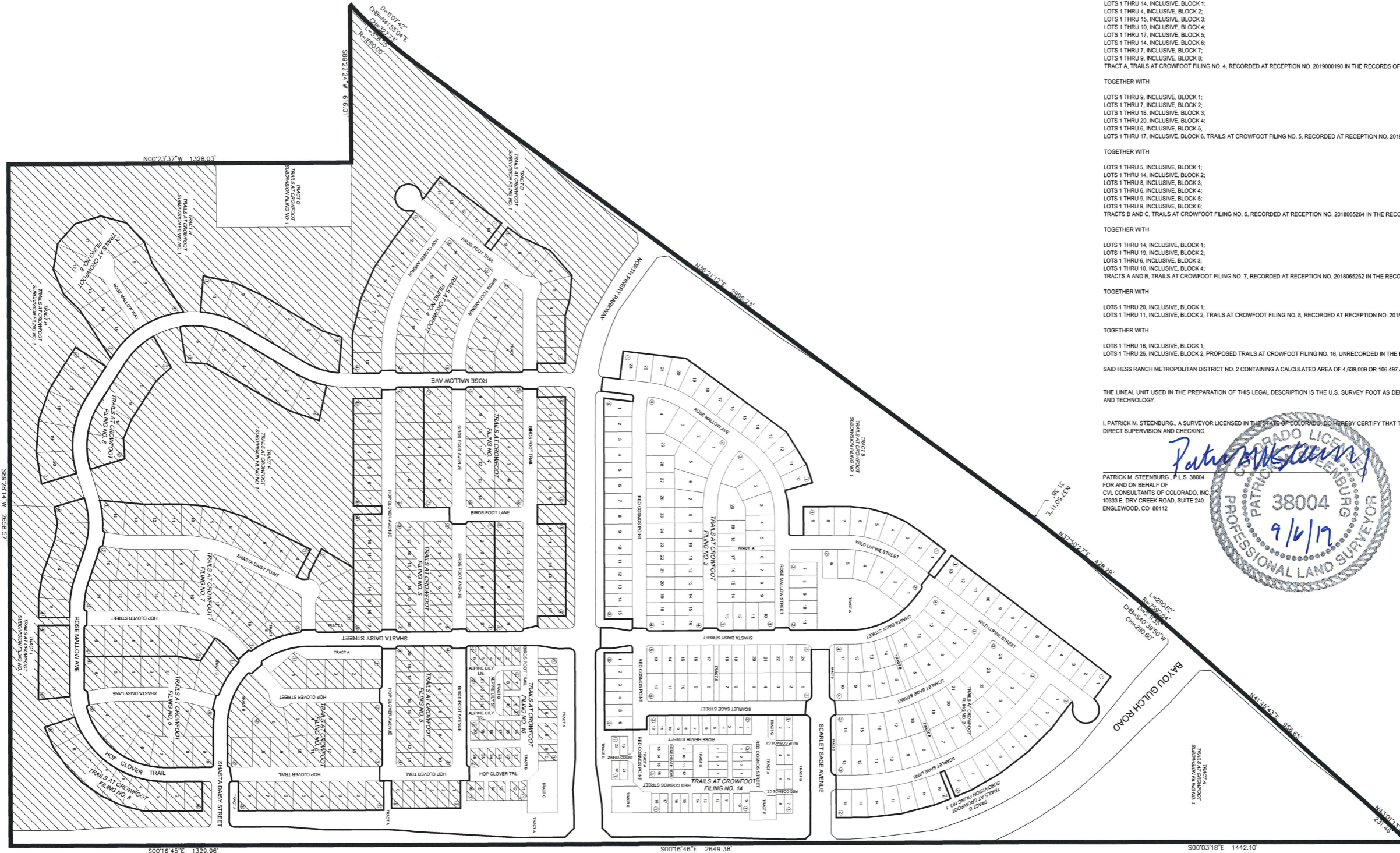
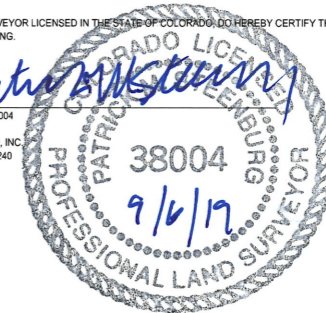
LOTS 1 THRU 16, INCLUSIVE, BLOCK 1;
LOTS 1 THRU 26, INCLUSIVE, BLOCK 2, PROPOSED TRAILS AT CROWFOOT FILING NO. 16, UNRECORDED IN THE RECORDS OF THE DOUGLAS COUNTY, COLORADO CLERK AND RECORDER;

SAID HESS RANCH METROPOLITAN DISTRICT NO. 2 CONTAINING A CALCULATED AREA OF 4,639.009 OR 106.497 ACRES, MORE OR LESS.

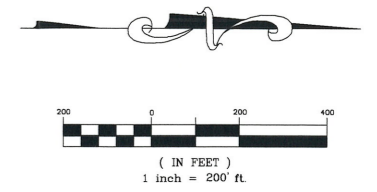
THE LINEAL UNIT USED IN THE PREPARATION OF THIS LEGAL DESCRIPTION IS THE U.S. SURVEY FOOT AS DEFINED BY THE UNITED STATES DEPARTMENT OF COMMERCE, NATIONAL INSTITUTE OF STANDARDS AND TECHNOLOGY.

I, PATRICK M. STEENBURG, A SURVEYOR LICENSED IN THE STATE OF COLORADO, DO HEREBY CERTIFY THAT THE ABOVE LEGAL DESCRIPTION AND ATTACHED EXHIBIT WERE PREPARED BY ME OR UNDER MY DIRECT SUPERVISION AND CHECKING.

PATRICK M. STEENBURG, P.L.S. 38004
FOR AND ON BEHALF OF
C.V.L. CONSULTANTS OF COLORADO, INC.
10333 E. DRY CREEK ROAD, SUITE 240
ENGLEWOOD, CO 80112



AREAS INCLUDED IN METRO DISTRICT NO. 2



ENGINEER/SURVEYOR
CVL CONSULTANTS
10333 E. Dry Creek Rd., Suite 240
Englewood, CO 80112
Tel: (720) 482-9526 / Fax: (720) 482-9546