

INVERNESS
METROPOLITAN IMPROVEMENT DISTRICT

c/o Mulhern MRE, Inc.
188 Inverness Drive West #150
Englewood, CO 80112
303-649-9857 Fax 303-414-0671

December 27, 2019

Colorado Department of Local Affairs
1313 Sherman Street, #518
Denver, CO 80203
303-866-4819
Elizabeth.villegas@state.co.us

Douglas County Clerk and Recorder
recording@douglas.co.us

Arapahoe County Clerk and Recorder
clerk@arapahoe.gov

Douglas County Assessor
assessors@douglas.co.us

Arapahoe County Assessor
assessor@arapahoe.gov

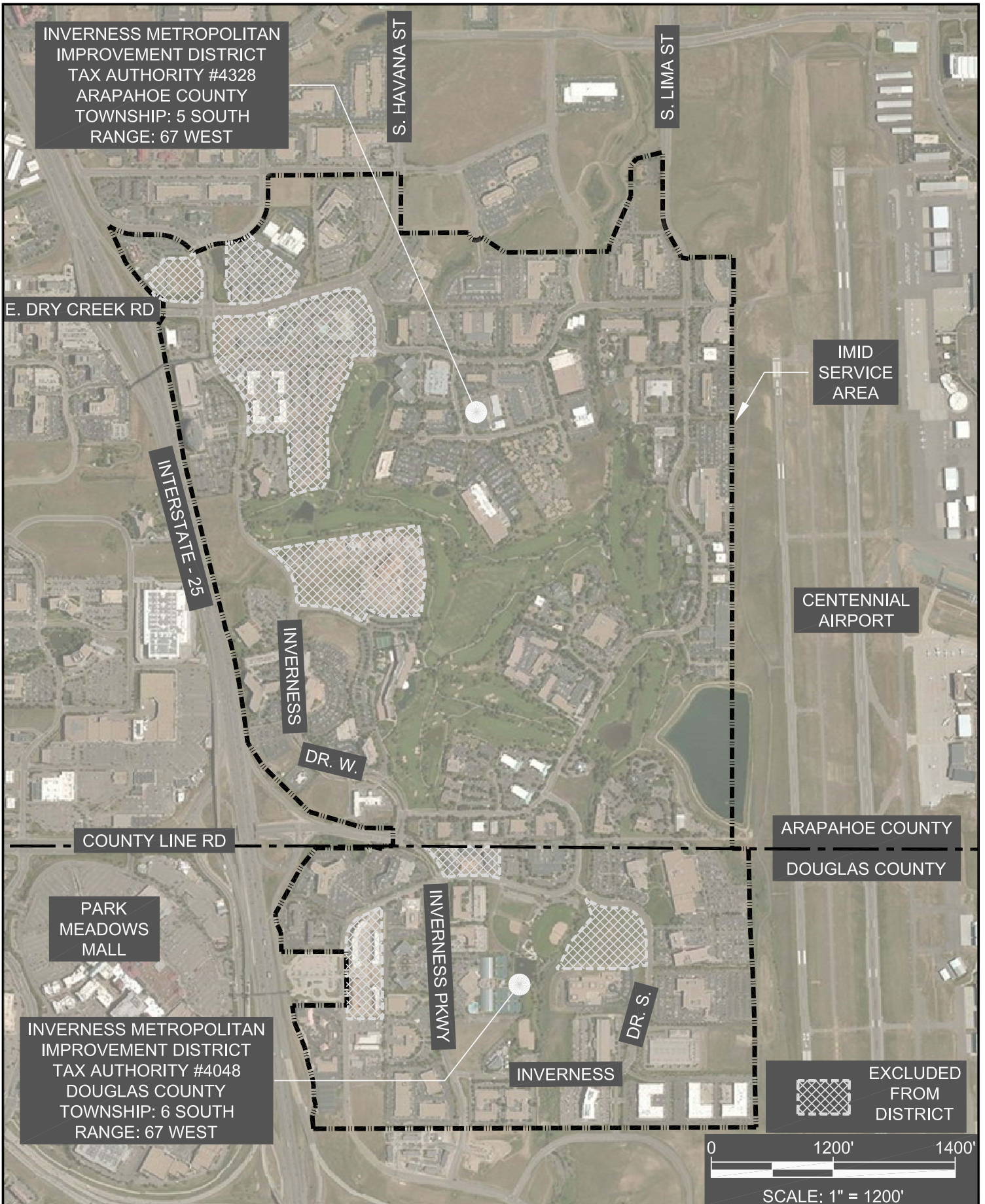
Re: 2020 Annual Map Filing, Inverness Metropolitan Improvement District

To Whom It May Concern:

The Inverness Metropolitan Improvement District is submitting the attached boundary map to meet the statutory requirements for 2020.

Thank you,
INVERNESS METROPOLITAN IMPROVEMENT DISTRICT

Kelly Conover
Administrative Assistant



INVERNESS METROPOLITAN
IMPROVEMENT DISTRICT
TAX AUTHORITY #4328
ARAPAHOE COUNTY
TOWNSHIP: 5 SOUTH
RANGE: 67 WEST

S. HAVANA ST

S. LIMA ST

E. DRY CREEK RD

IMID
SERVICE
AREA

INTERSTATE - 25

CENTENNIAL
AIRPORT

INVERNESS

DR. W.

COUNTY LINE RD

ARAPAHOE COUNTY

DOUGLAS COUNTY

PARK
MEADOWS
MALL

INVERNESS PKWY

DR. S.

INVERNESS METROPOLITAN
IMPROVEMENT DISTRICT
TAX AUTHORITY #4048
DOUGLAS COUNTY
TOWNSHIP: 6 SOUTH
RANGE: 67 WEST

INVERNESS

EXCLUDED
FROM
DISTRICT



SCALE: 1" = 1200'

INVERNESS METROPOLITAN IMPROVEMENT DISTRICT
TAX AUTHORITY #4382 ARAPAHOE COUNTY
TAX AUTHORITY #4048 DOUGLAS COUNTY



12/23/2019

