

**Sterling Ranch Colorado Metropolitan District No. 3**  
**8390 E Crescent Parkway, Suite 300**  
**Greenwood Village, Colorado 80111**  
**Office: 303.779.5710    Fax: 303.779.0348**

December 19, 2019

Division of Local Government  
1313 Sherman Street, Room 521  
Denver, CO 80203  
[Via E-Filing Portal](#)

Office of the Douglas County Assessor  
301 Wilcox Street  
Castle Rock, CO 80104  
[assessors@douglas.co.us](mailto:assessors@douglas.co.us)

Office of the Douglas County Clerk &  
Recorder  
301 Wilcox Street, 1<sup>st</sup> Floor  
Castle Rock, CO 80104  
[recording@douglas.co.us](mailto:recording@douglas.co.us)

Re: Sterling Ranch Colorado Metropolitan District No. 3 – 2019 Map Filing

Dear Filing Administrator:

Colorado Revised Statute §32-1-306 requires special districts to provide a current, and accurate map of its boundaries to the Division of Local Government, County Assessor and Clerk and Recorder on or before January 1, of each year. In 2019 the District above had boundary changes.

Please replace the map you currently have with this updated one. Should you have further questions or need additional information, please contact the undersigned.

Sincerely,

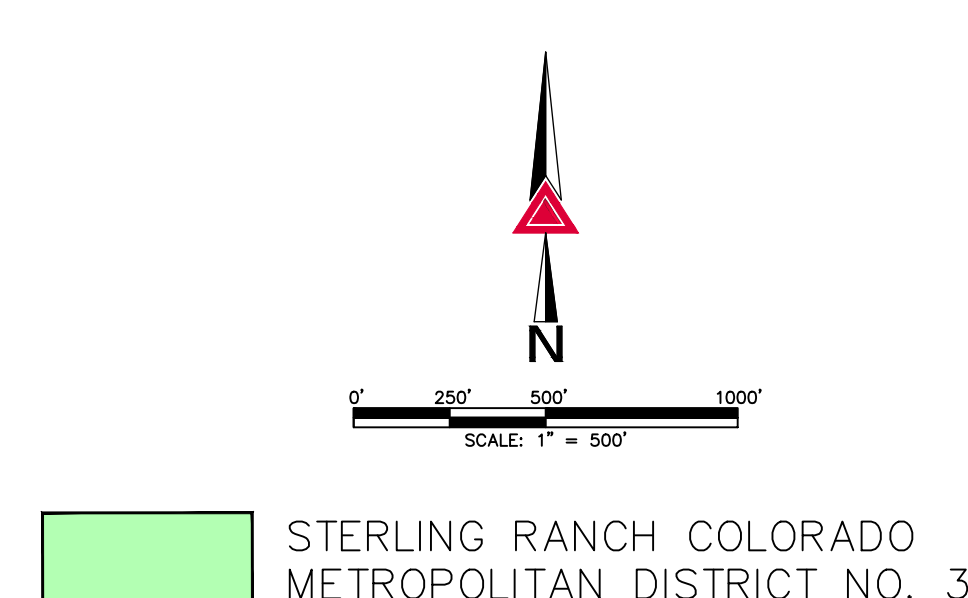
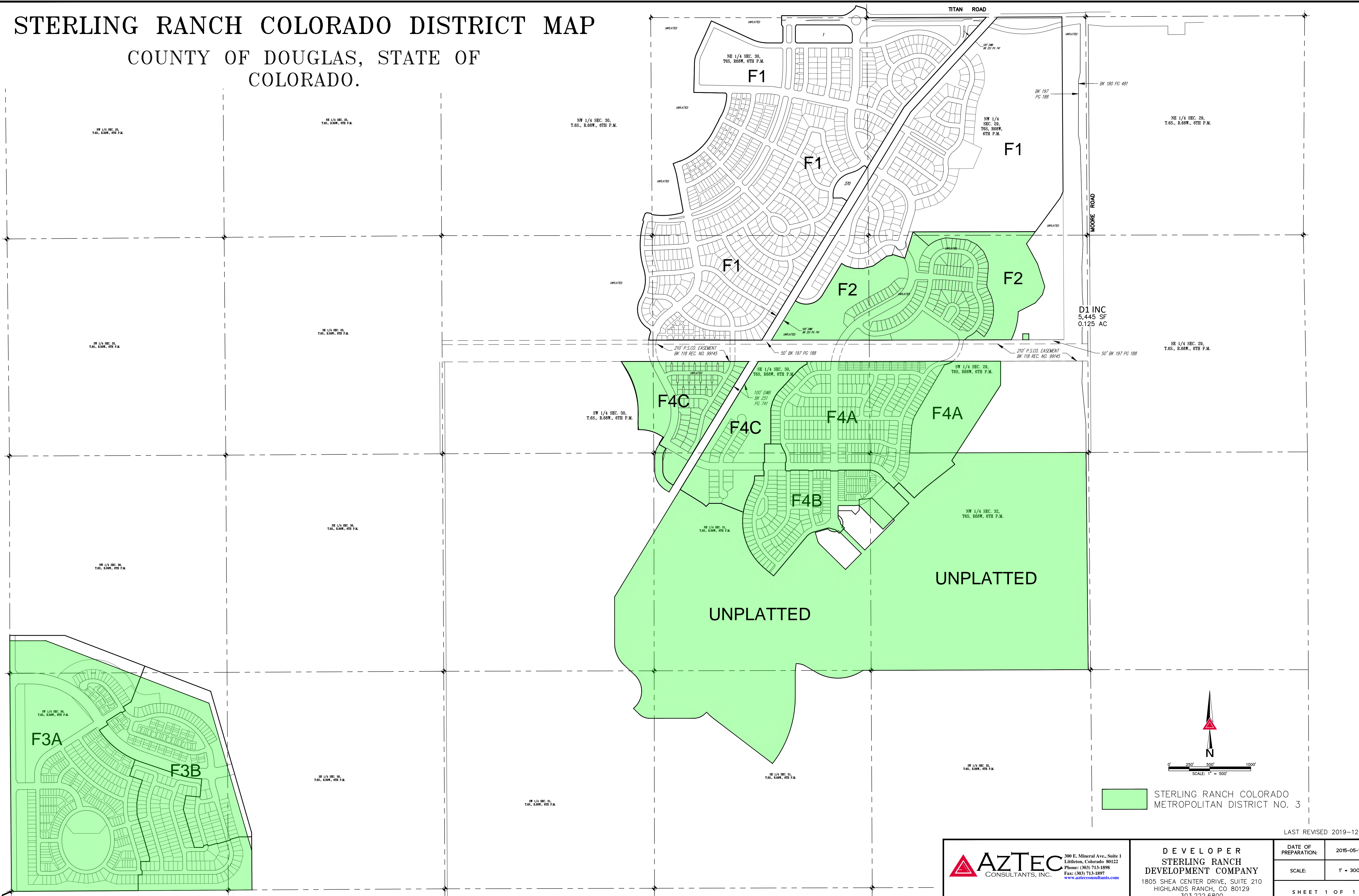
*Cindy Jenkins*

Cindy Jenkins  
District Administrator

Enclosure

# STERLING RANCH COLORADO DISTRICT MAP

## COUNTY OF DOUGLAS, STATE OF COLORADO.



LAST REVISED 2019-12-09

<p><b>AZTEC</b> CONSULTANTS, INC.</p> <p>300 E. Mineral Ave., Suite 1 Littleton, Colorado 80122 Phone: (303) 713-1898 Fax: (303) 713-1897 www.aztecconsultants.com</p>	<p><b>DEVELOPER</b> STERLING RANCH DEVELOPMENT COMPANY</p> <p>1805 SHEA CENTER DRIVE, SUITE 210 HIGHLANDS RANCH, CO 80129 303.222.6800</p>		<p>DATE OF PREPARATION: 2015-05-13</p>
	<p>Drawn By: CWB</p> <p>AzTec Proj. No.: 54615-29</p>		<p>SCALE: 1" = 300'</p>
			<p>SHEET 1 OF 1</p>