

Sterling Ranch Colorado Metropolitan District No. 1
8390 E Crescent Parkway, Suite 300
Greenwood Village, Colorado 80111
Office: 303.779.5710 Fax: 303.779.0348

December 19, 2019

Division of Local Government
1313 Sherman Street, Room 521
Denver, CO 80203
[Via E-Filing Portal](#)

Office of the Douglas County Assessor
301 Wilcox Street
Castle Rock, CO 80104
assessors@douglas.co.us

Office of the Douglas County Clerk &
Recorder
301 Wilcox Street, 1st Floor
Castle Rock, CO 80104
recording@douglas.co.us

Re: Sterling Ranch Colorado Metropolitan District No. 1 – 2019 Map Filing

Dear Filing Administrator:

Colorado Revised Statute §32-1-306 requires special districts to provide a current, and accurate map of its boundaries to the Division of Local Government, County Assessor and Clerk and Recorder on or before January 1, of each year. In 2019 the District above had boundary changes.

Please replace the map you currently have with this updated one. Should you have further questions or need additional information, please contact the undersigned.

Sincerely,

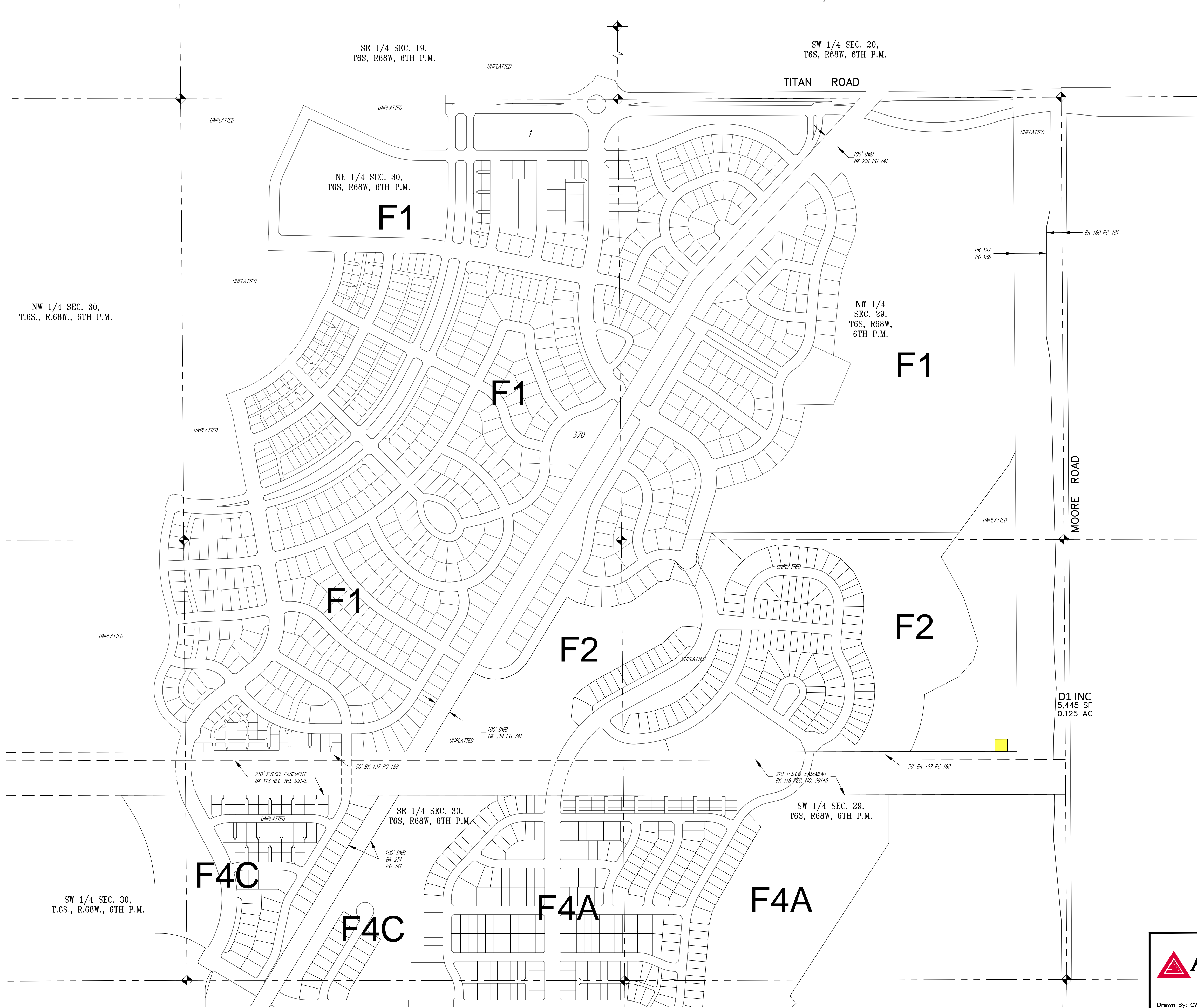
Cindy Jenkins

Cindy Jenkins
District Administrator

Enclosure

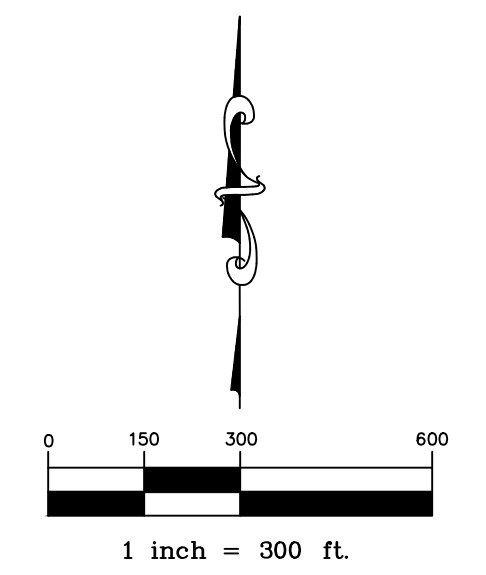
STERLING RANCH COLORADO DISTRICT MAP

A PART OF SECTIONS 19, 29 AND 30, TOWNSHIP 6 SOUTH, RANGE 68 WEST OF THE SIXTH PRINCIPAL MERIDIAN,
COUNTY OF DOUGLAS, STATE OF COLORADO.



 STERLING RANCH COLORADO METROPOLITAN DISTRICT NO. 1

D1 INC
5,445 SF
0.125 AC



LAST REVISED 2019-12-09

 <p>300 E. Mineral Ave., Suite 1 Littleton, Colorado 80122 Phone: (303) 713-1898 Fax: (303) 713-1897 www.aztecconsultants.com</p>	<p>DEVELOPER STERLING RANCH DEVELOPMENT COMPANY 1805 SHEA CENTER DRIVE, SUITE 210 HIGHLANDS RANCH, CO 80129 303.222.6800</p>	
	<p>DATE OF PREPARATION: 2015-05-13</p>	<p>SCALE: 1" = 300'</p>
<p>Drawn By: CWB</p>		<p>SHEET 1 OF 1</p>