



Alyssa K. Rios  
Paralegal

303-858-1800  
arios@wbapc.com

December 6, 2022

**VIA ELECTRONIC SUBMISSION  
AND ELECTRONIC MAIL**

Division of Local Government  
*E-filed via [www.dola.colorado.gov/e-filing](http://www.dola.colorado.gov/e-filing)*

Douglas County Clerk and Recorder  
301 Wilcox Street  
Castle Rock, CO 80104  
recording@douglas.co.us

Douglas County Assessor  
301 Wilcox Street  
Castle Rock, CO 80104  
assessors@douglas.co.us

**Re: Trails At Crowfoot Metropolitan District No. 2 (LGID#:66687)  
Map Filing Pursuant to §32-1-306, C.R.S. – No Change in Boundaries**

To Whom It May Concern:

Section 32-1-306, C.R.S., requires special districts to provide a current, accurate map of their boundaries to the Division of Local Government, County Clerk and Recorder and County Assessor by January 1 of each year. This letter is to inform you that the map that is currently on file with your office for the above-referenced District is the most current and accurate map. A copy of the current map is attached for your convenience.

Should you have any questions, please do not hesitate to contact me.

Sincerely,

WHITE BEAR ANKELE TANAKA & WALDRON  
Attorneys at Law

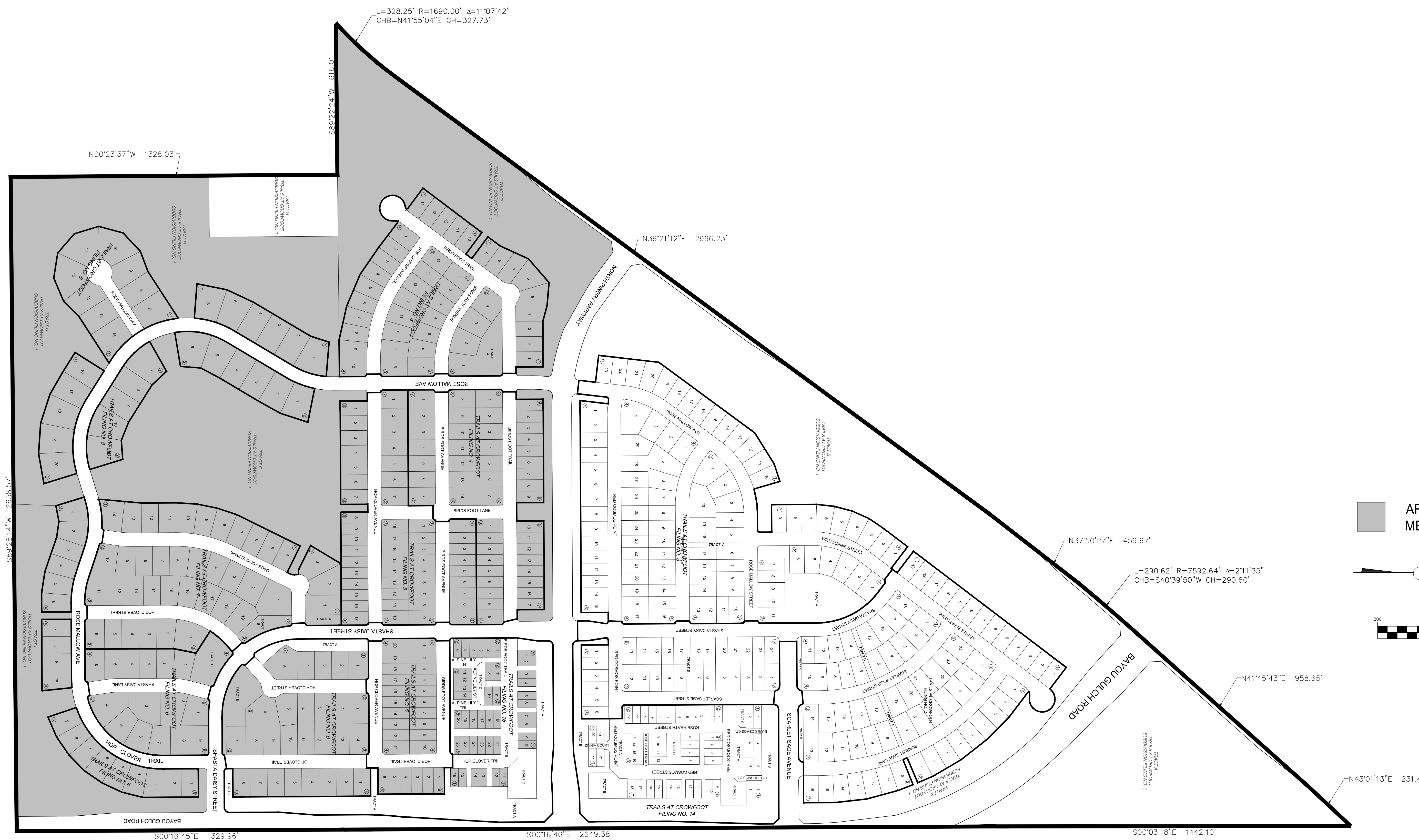
Alyssa K. Rios, Paralegal

Enclosure

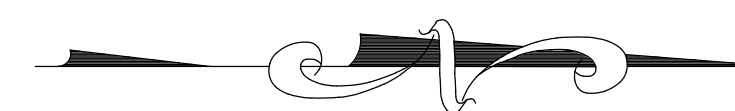
# TRAILS AT CROWFOOT METROPOLITAN DISTRICT NO. 2

LGID#:66687

A PART OF SECTION 9, TOWNSHIP 7 SOUTH, RANGE 66 WEST OF THE 6th PRINCIPAL MERIDIAN,  
TOWN OF PARKER, COUNTY OF DOUGLAS, STATE OF COLORADO  
SHEET 1 OF 1



AREAS INCLUDED IN METRO DISTRICT NO. 2



( IN FEET )  
1 inch = 200' ft.

**Westwood**

10333 E DRY CREEK RD.  
SUITE 240  
ENGLEWOOD, CO 80112  
Westwoods.com  
Westwood Professional Services, Inc. TEL: 720.482.9526