

WILLIAM P. ANKELE, JR.
JENNIFER GRUBER TANAKA
CLINT C. WALDRON
KRISTIN BOWERS TOMPKINS
ROBERT G. ROGERS

OF COUNSEL:
KRISTEN D. BEAR
BLAIR M. DICKHONER



SEAN ALLEN
ZACHARY P. WHITE
CASEY K. LEKAHAL
TRISHA K. HARRIS
HEATHER L. HARTUNG
MEGAN J. MURPHY
EVE M. GRINA
JENNIFER F. KEMP
ALLISON C. FOGG

December 28, 2018

**VIA ELECTRONIC SUBMISSION
AND ELECTRONIC MAIL**

Division of Local Government

Douglas County Clerk & Recorder
recording@douglas.co.us

Douglas County Assessor
assessors@douglas.co.us

**Re: Mirabelle Metropolitan District No. 2 (LGID#:66756)
Map Filing Pursuant to §32-1-306, C.R.S. – Change in Boundaries**

To Whom It May Concern:

Section 32-1-306, C.R.S., requires special districts to provide a current, accurate map of their boundaries to the Division of Local Government (the “Division”), County Clerk and Recorder and County Assessor by January 1 of each year. A copy of the updated map for the above-referenced District was electronically submitted on the Division’s website and is also enclosed for your convenience.

Should you have any questions, please do not hesitate to contact me.

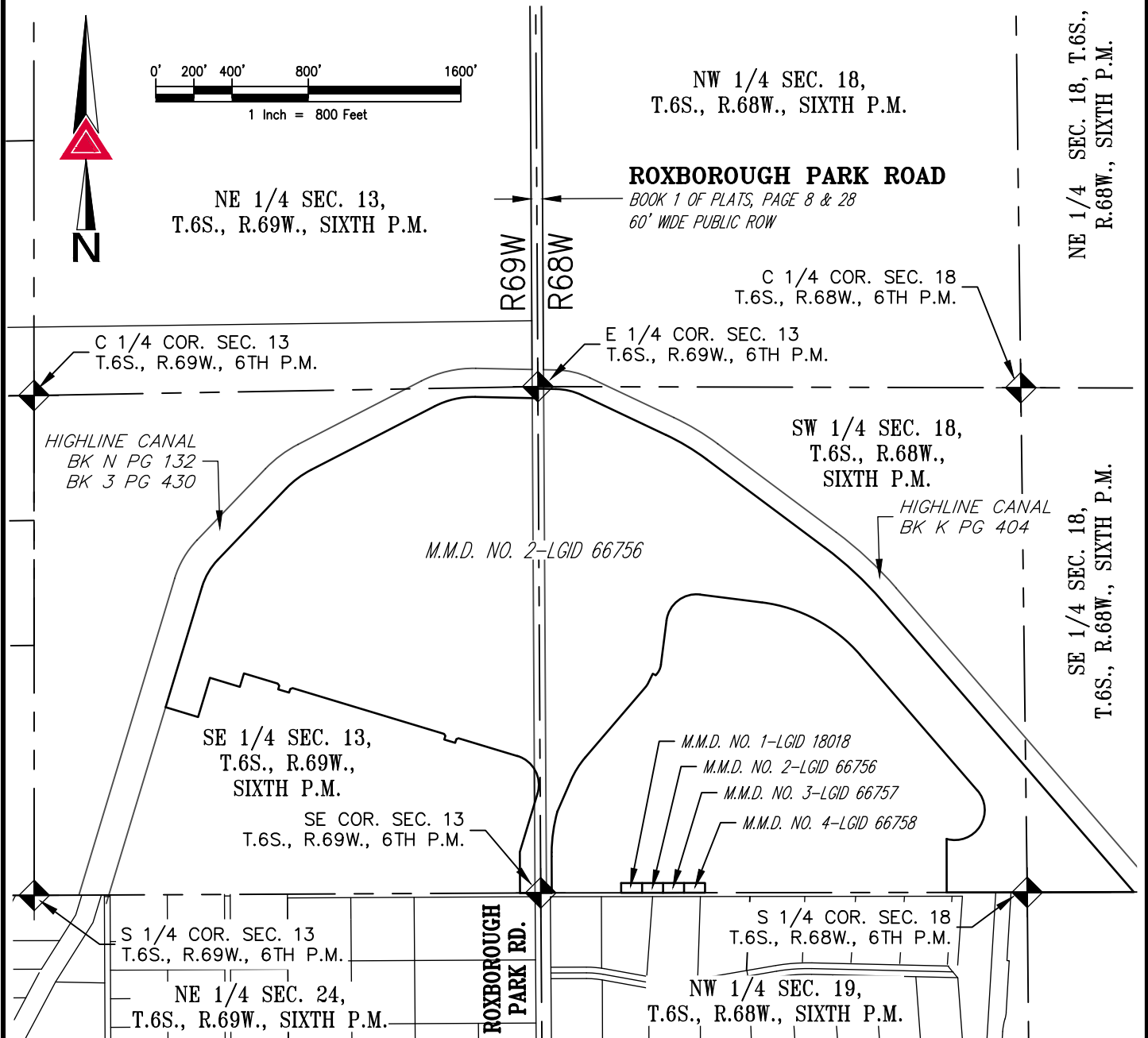
Sincerely,

WHITE BEAR ANKELE TANAKA & WALDRON
Attorneys at Law

Rose A. Vallesio
Paralegal

LGID#:66756

MIRABELLE METROPOLITAN DISTRICT
A PORTION OF SECTION 18, TOWNSHIP 6 SOUTH, RANGE 68 WEST
AND SECTION 13, TOWNSHIP 6 SOUTH, RANGE 69 WEST
OF THE SIXTH PRINCIPAL MERIDIAN,
COUNTY OF DOUGLAS, STATE OF COLORADO



NOTE: THIS DRAWING DOES NOT REPRESENT A MONUMENTED LAND SURVEY.

PATH: Q:\121618-01\DWG\EXHIBITS\
DWG NAME: _____
DWG: DSB CHK: _____
DATE: 5/9/2018
SCALE: 1" = 800'



AZTEC
CONSULTANTS, INC.

MIRABELLE METRO DIST MAP.DWG

300 East Mineral Ave,
Suite 1
Littleton, Colorado 80122
Phone: (303)713-1898
Fax: (303)713-1897
www.aztecconsultants.com

DISTRICT MAP

MIRABELLE METRO. DISTRICTS 1, 2, 3 & 4
DOUGLAS COUNTY, COLORADO

JOB NUMBER 121618-01

1 OF 1 SHEETS