

NORTON & SMITH, P.C.

Charles E. Norton
Erin M. Smith

Attorneys at Law
1331 17th Street, Suite 500
Denver, Colorado 80202-1555
Telephone (303) 292-6400
Facsimile (303) 292-6401

Kristin N. Cisowski

Of Counsel
The Phillips Law Office, LLC
Joan M. Fritsche

December 27, 2018

VIA EMAIL

Douglas County Assessor
assessors@douglas.co.us

Douglas County Clerk and Recorder
recording@douglas.co.us

VIA E-FILING

Division of Local Government

Re: Castleton Center Water and Sanitation District

To Whom It May Concern:

Pursuant to Section 32-1-306, C.R.S., as amended, our office is notifying you that the boundaries of the Castleton Center Water and Sanitation District did not change during 2018; nonetheless a map showing the current boundaries of the District is enclosed.

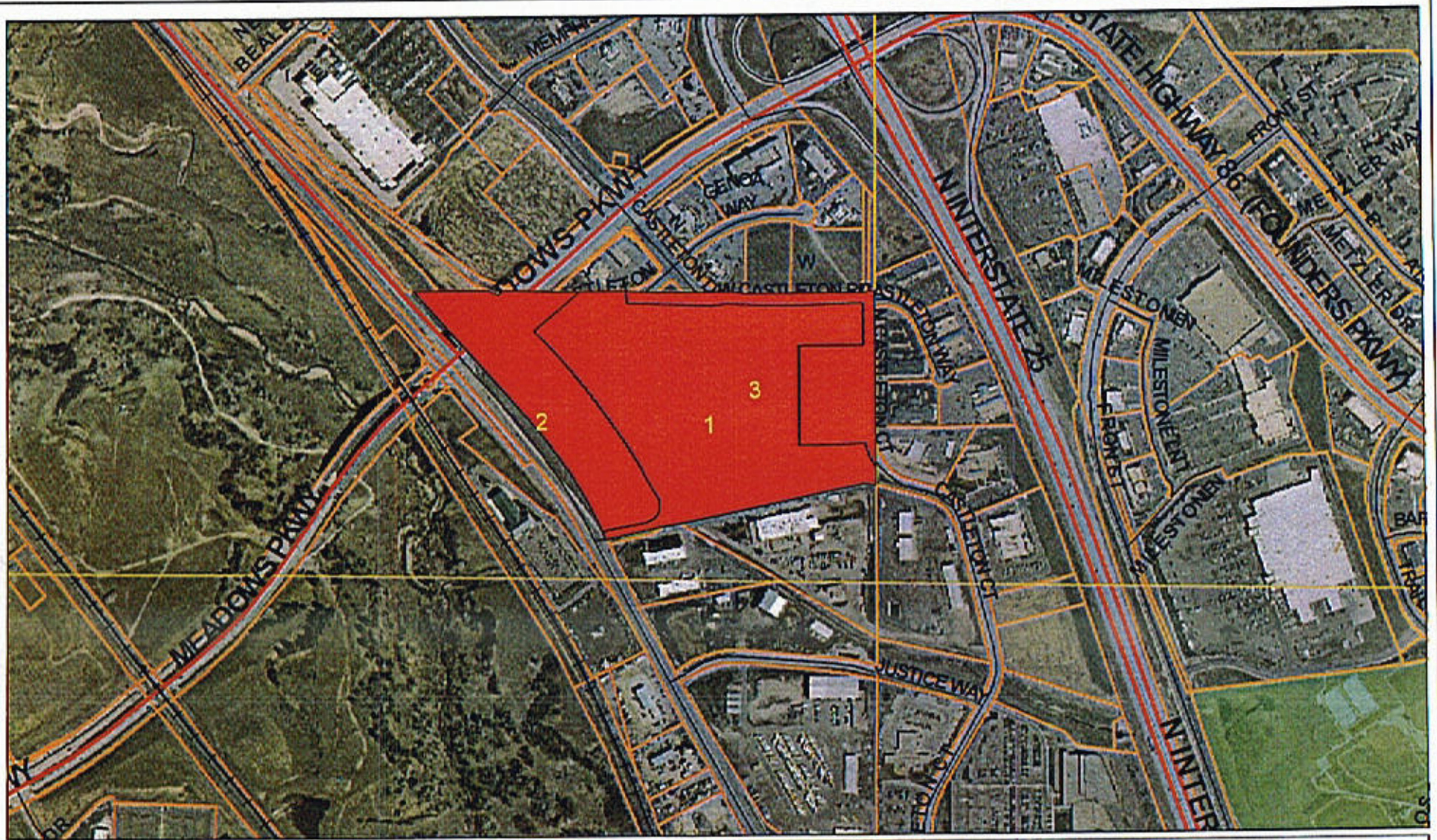
If any additional information is needed regarding this matter, please feel free to contact our office. Thank you.

Sincerely,

NORTON & SMITH, P.C.



Wynter B. Wells
Paralegal



DISCLAIMER
 All data and information ("Products") contained herein are for informational purposes only. Although such Products are intended to be accurate at the time of publication, Douglas County does not warrant that such Products are error free. Douglas County provides these Products on an "as is" basis without warranties of any kind, either express or implied, including, but not limited to, warranties of title or implied warranties of merchantability or fitness for a particular purpose. Douglas County shall not be liable for any direct, indirect, incidental, special or consequential damages arising out of the use of such Products, or the inability to use such Products or out of any breach of any warranty. The user acknowledges and agrees that the use of such Products is at the sole risk of the user.

General questions about this or any other Douglas County GIS products, including errors, omissions, corrections and/or updates should be directed to the Douglas County GIS Division at (303) 669-7410.

Castleton Center Water & Sanitation District

- Legend**
- Major Roads
 - Railroads
 - Parcels
 - Municipalities
 - Schools

