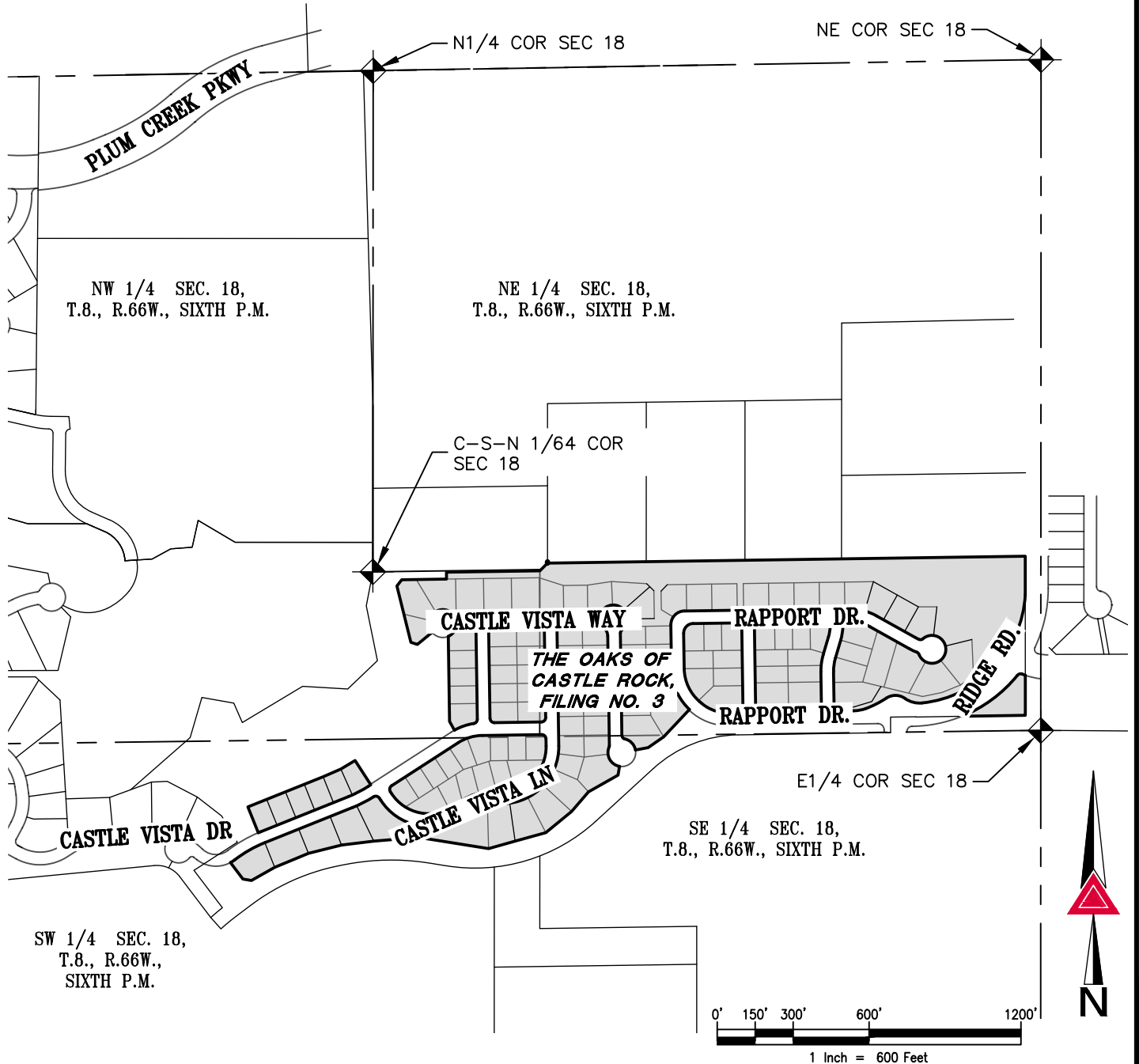


# EXHIBIT B

CASTLEVIEW METROPOLITAN DISTRICT NO. 2  
 A PORTION OF SECTION 18, TOWNSHIP 8 SOUTH, RANGE 66 WEST  
 OF THE SIXTH PRINCIPAL MERIDIAN,  
 TOWN OF CASTLE ROCK, COUNTY OF DOUGLAS, STATE OF COLORADO



NOTE: THIS DRAWING DOES NOT REPRESENT A MONUMENTED LAND SURVEY AND IS ONLY INTENDED TO DEPICT THE ATTACHED LEGAL DESCRIPTION.

PATH: Q:\134118-01\DWG\EXHIBITS\  
 DWG NAME: \_\_\_\_\_  
 DWG: MDW CHK: DSB  
 DATE: 8/2/2018  
 SCALE: 1" = 600'

**AZTEC**  
 CONSULTANTS, INC.  
 300 East Mineral Ave,  
 Suite 1  
 Littleton, Colorado 80122  
 Phone: (303)713-1898  
 Fax: (303)713-1897  
[www.aztecconsultants.com](http://www.aztecconsultants.com)

Exhibit B - Castleview Metro Dist No.2 Exhibit.DWG

**DISTRICT MAP**  
 CASTLEVIEW METROPOLITAN DISTRICT NO. 2  
 DOUGLAS COUNTY, COLORADO

JOB NUMBER 134118-01

1 OF 1 SHEETS