

SOUTHEAST PUBLIC IMPROVEMENT  
METROPOLITAN DISTRICT

c/o Mulhern MRE, Inc.  
188 Inverness Drive West #150  
Englewood, CO 80112  
303-649-9857 Fax 303-414-0671

December 29, 2017

Colorado Department of Local Affairs  
Division of Local Governments  
1313 Sherman Street, #518  
Denver, CO 80203  
303-866-4819 fax  
[Elizabeth.villegas@state.co.us](mailto:Elizabeth.villegas@state.co.us)

Douglas County Clerk and Recorder  
[recording@douglas.co.us](mailto:recording@douglas.co.us)

Douglas County Assessor  
[assessors@douglas.co.us](mailto:assessors@douglas.co.us)

Arapahoe County Clerk and Recorder  
[clerk@arapahoegov.com](mailto:clerk@arapahoegov.com)

Arapahoe County Assessor  
[assessor@arapahoegov.com](mailto:assessor@arapahoegov.com)

City and County of Denver  
[assessor@denvergov.org](mailto:assessor@denvergov.org)  
[clerkandrecorder@denvergov.org](mailto:clerkandrecorder@denvergov.org)

Re: Annual Map Filing, Southeast Public Improvement Metropolitan District

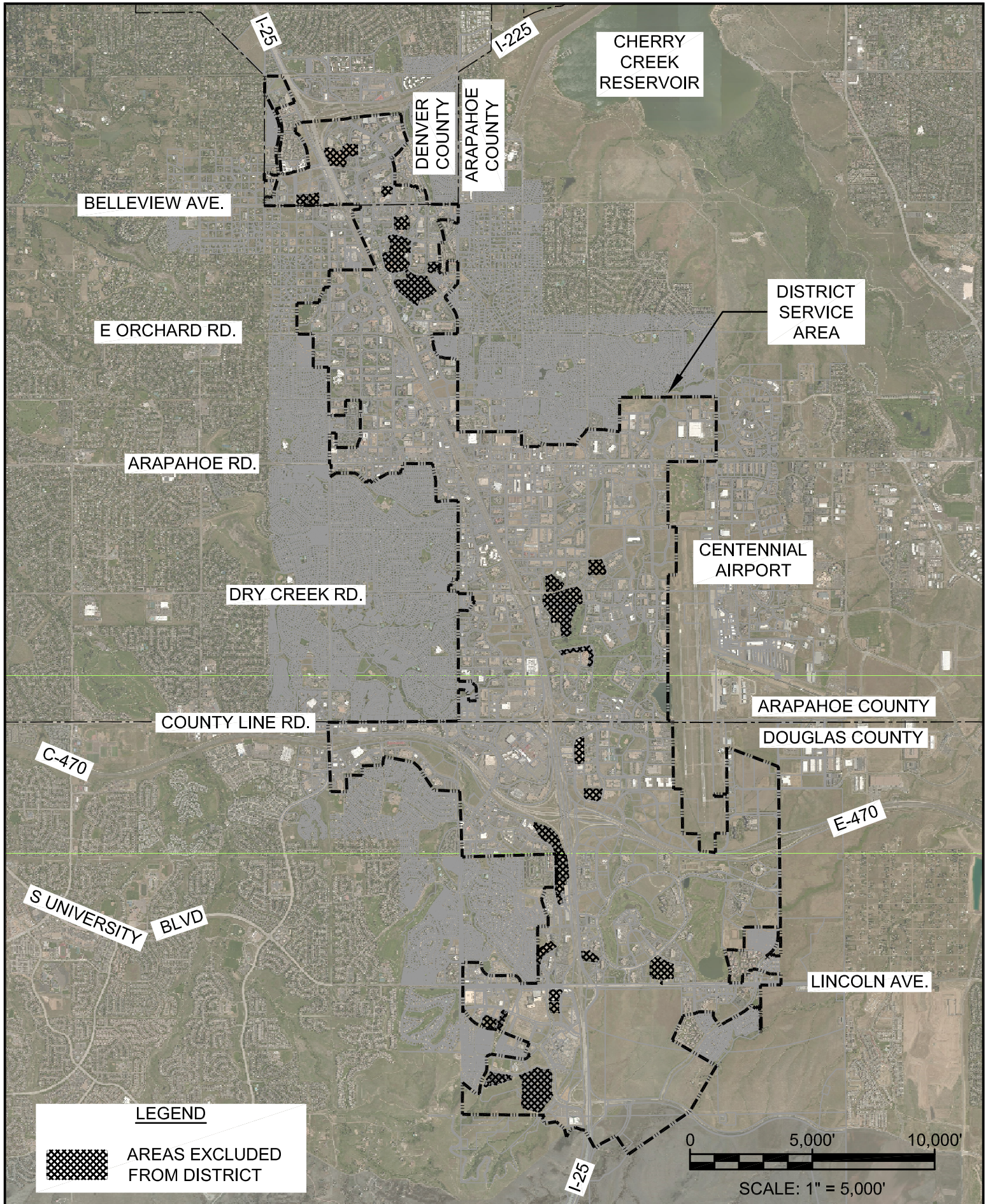
To Whom It May Concern:

Please see the attached current boundary map for the Southeast Public Improvement Metropolitan District per the statutory requirement for 2018.


Thank you,  
SOUTHEAST PUBLIC IMPROVEMENT METROPOLITAN DISTRICT

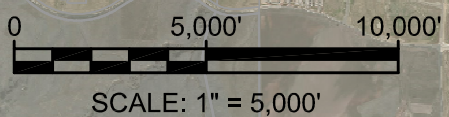
Kelly Conover  
Administrative Assistant

Enclosed



**LEGEND**

 AREAS EXCLUDED FROM DISTRICT



**SOUTHEAST PUBLIC IMPROVEMENT METROPOLITAN DISTRICT**  
 TAX AUTHORITY # 4615 ARAPAHOE COUNTY, # 4452 DOUGLAS COUNTY &  
 DENVER COUNTY

  
 12/31/2018

**Mulhern**  
**MRE, Inc.**  
*Managing Resources thru Engineering*