

GARY R. WHITE  
KRISTEN D. BEAR  
WILLIAM P. ANKELE, JR.  
JENNIFER GRUBER TANAKA  
CLINT C. WALDRON  
KRISTIN BOWERS TOMPKINS  
ROBERT G. ROGERS

OF COUNSEL:  
BLAIR M. DICKHONER



SEAN ALLEN  
ZACHARY P. WHITE  
CASEY K. LEKAHAL  
TRISHA K. HARRIS  
HEATHER L. HARTUNG  
MEGAN J. MURPHY  
KRISTIN J. SCHLEDORN  
SILVIA FEJKA  
BRAD NEIMAN

December 20, 2017

**VIA ELECTRONIC SUBMISSION  
AND ELECTRONIC MAIL**

Division of Local Government  
*E-filed via [www.dola.colorado.gov/e-filing](http://www.dola.colorado.gov/e-filing)*

Douglas County Clerk & Recorder  
[recording@douglas.co.us](mailto:recording@douglas.co.us)

Douglas County Assessor  
[assessors@douglas.co.us](mailto:assessors@douglas.co.us)

**Re: Kings Point South Metropolitan District No. 1 (LGID#:65122)  
Map Filing Pursuant to §32-1-306, C.R.S. – No Change in Boundaries**

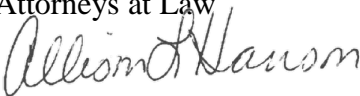
To Whom It May Concern:

Section 32-1-306, C.R.S., requires special districts to provide a current, accurate map of their boundaries to the Division of Local Government, County Clerk and Recorder and County Assessor by January 1 of each year. This letter is to inform you that the map that is currently on file with your office for the above-referenced District is the most current and accurate map. A copy of the current map is attached for your convenience.

Should you have any questions, please do not hesitate to contact me.

Sincerely,

WHITE BEAR ANKELE TANAKA & WALDRON  
Attorneys at Law



Allison L. Hanson, Paralegal

Attachment

# KINGS POINT SOUTH DISTRICT NO. 1 (TRACT A)

MEADOWS LIMITED  
LIABILITY CO.

MEADOWS LIMITED  
LIABILITY CO.

SW 1/4  
SEC. 34

SC SECS. 33 & 34  
FOUND 3-1/4" ALUM.  
CAP PLS 13155 1993  
P.O.B. TRACT A

S. LINE SW 1/4 SEC. 34 (BASIS OF BEARINGS)

N89°55'37"E  
225.46'

N89°58'24"E 1891.46'

D=31°55'08"  
R=3969.72'  
L=2211.49'

NE 1/4  
SEC. 4

TRACT A  
61.022 AC.

NW 1/4  
SEC. 3

TRACT B

N00°12'54"E 1764.09'

D=34°03'07"  
R=1438.00'  
L=854.63'

LUNDIECK  
INVESTMENTS, INC.

N67°32'58"W  
213.59'

S13°42'36"W  
30.49'

SW 1/4  
SEC. 3

CROWN POINT  
CENTER, LTD.

CROWN POINT  
CENTER LTD

CROWN POINT  
CENTER LTD



1 inch = 800 ft.

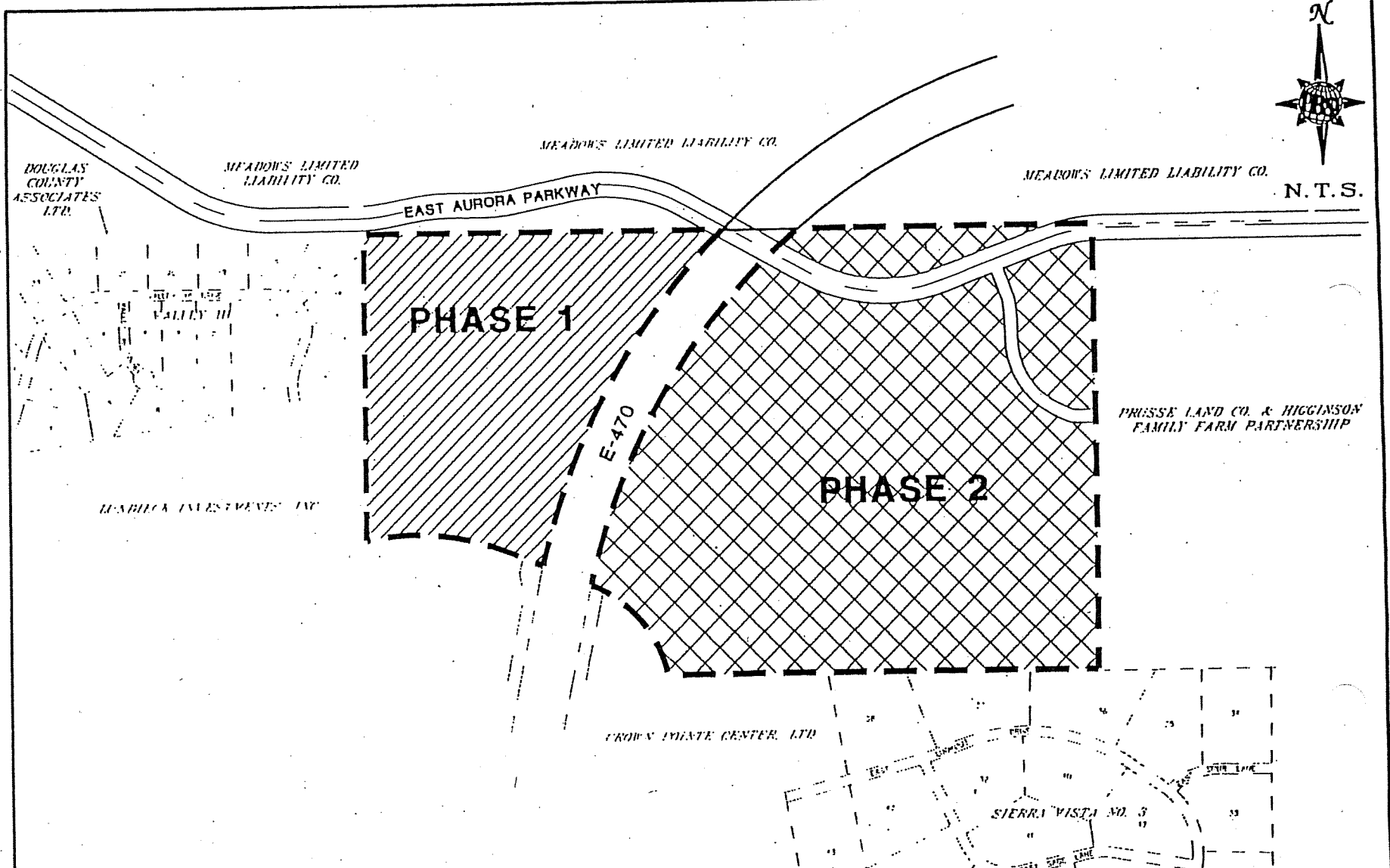


5500 Greenwood Plaza Blvd.  
Suite 150  
Englewood, Colorado 80111  
Telephone: 303/221-7275  
Fax: 303/221-7276

ENGINEERING • PLANNING • SURVEYING • CONSTRUCTION SERVICES



N.T.S.



**Kings Point South -**  
**PUBLIC IMPROVEMENTS PHASING PLAN**  
 City of Aurora, Colorado

**LEGEND**

	PHASE LINE
	PHASE 1
	PHASE 2



5500 Greenwood Plaza Blvd.  
 Suite 150  
 Englewood, Colorado 80111  
 Telephone: 303/221-7275  
 Fax: 303/221-7276

ENGINEERING • PLANNING • SURVEYING • CONSTRUCTION SERVICES  
 JOB NUMBER 246082.00

4/16/02