

NORTON & SMITH, P.C.

Charles E. Norton
Erin M. Smith

Attorneys at Law
1331 17th Street, Suite 500
Denver, Colorado 80202-1555
Telephone (303) 292-6400
Facsimile (303) 292-6401

Kristin N. Cisowski

December 20, 2017

VIA EMAIL

Douglas County Assessor
assessors@douglas.co.us

Douglas County Clerk and Recorder
recording@douglas.co.us

VIA E-FILING

Division of Local Government

Re: Castleton Center Water and Sanitation District

To Whom It May Concern:

Pursuant to Section 32-1-306, C.R.S., as amended, our office is notifying you that the boundaries of the Castleton Center Water and Sanitation District did not change during 2017; nonetheless a map showing the current boundaries of the District is enclosed.

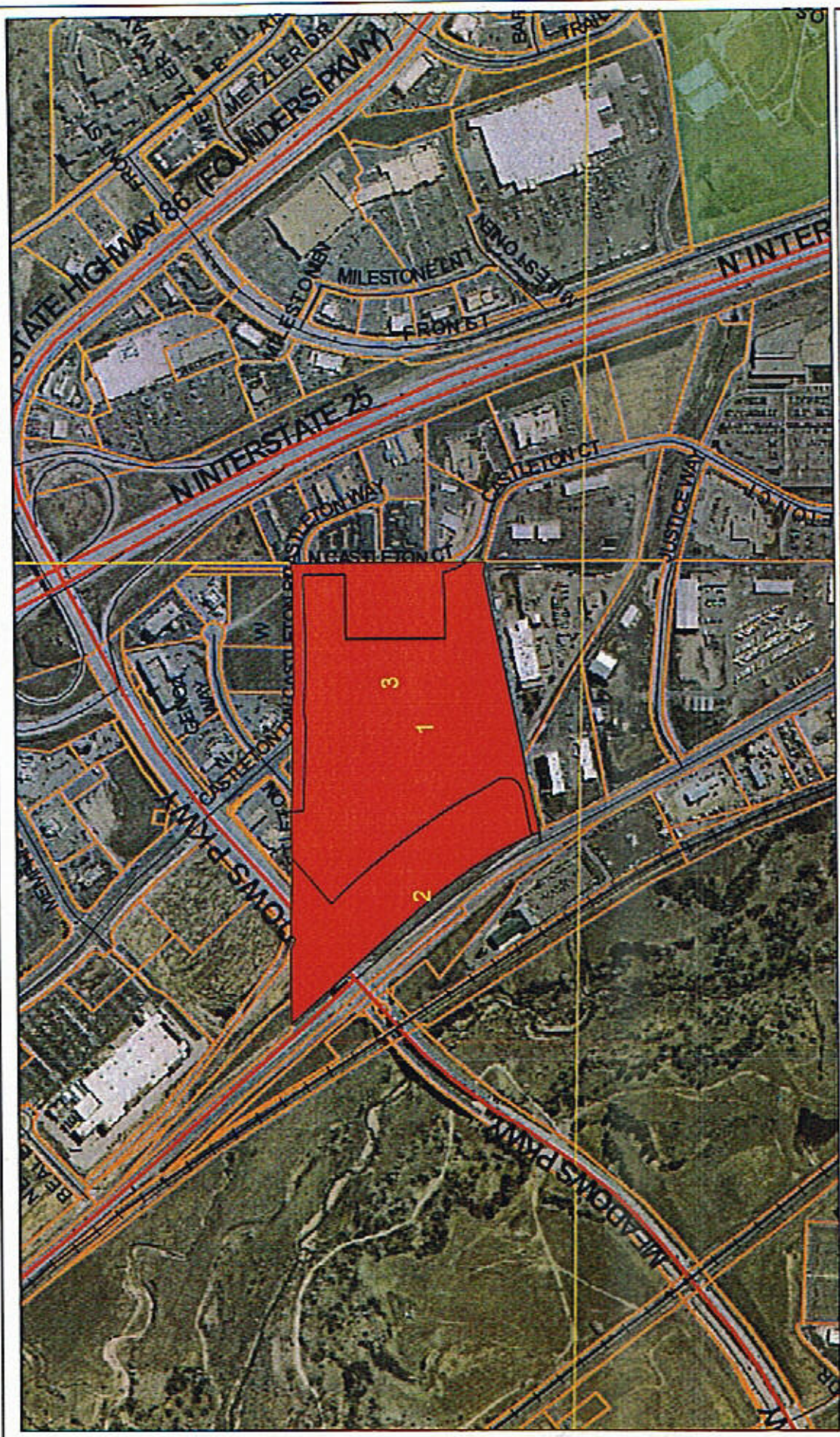
If any additional information is needed regarding this matter, please feel free to contact our office. Thank you.

Sincerely,

NORTON & SMITH, P.C.



Wynter B. Wells
Paralegal



Castleton Center Water & Sanitation District

- Legend**
- Major Roads
 - Railroads
 - Municipalities
 - Parcels
 - ▲ Schools
 - Other Roads

DISCLAIMER
 All data and information ("Products") contained herein are for informational purposes only. Although such Products are believed to be accurate, we warrant that such Products are not based on Douglas County records. These Products are an "as is" basis without warranty of any kind, whether express or implied, including, but not limited to, warranties of title or implied warranties of merchantability or fitness for a particular purpose. Douglas County shall not be liable for any direct, indirect, incidental, special or consequential damages arising out of the use of such Products, or the inability to use such Products or out of any transaction entered into by the user. The user shall agree to the use of such Products at the sole risk of the user.
 General questions about this or any other Douglas County GIS products, including errors, omissions, corrections and/or updates should be directed to the Douglas County GIS Division at gis@dcgov.com or 908-241-6100.