

**RESOLUTION NO. R-017-027**

**THE BOARD OF COUNTY COMMISSIONERS  
OF THE COUNTY OF DOUGLAS, COLORADO**

**A RESOLUTION APPROVING THE TEMPORARY ROAD CLOSURE OF PERRY  
PARK ROAD BETWEEN FOX FARM ROAD AND PERRY PARK AVENUE**

**WHEREAS**, Douglas County Engineering Division is requesting a temporary road closure for Perry Park Road between Fox Farm Road and Perry Park Avenue. The closure will allow for the emergency repair of a failing existing drainage culvert under Perry Park Road; and

**WHEREAS**, Perry Park Road is a County-maintained roadway; and

**WHEREAS**, the Board of County Commissioners (the "Board") has the authority to temporarily prohibit the operation of vehicles upon roads within its jurisdiction, pursuant to sections 42-4-106(1) and (6), C.R.S.; and

**WHEREAS**, the temporary road closure of Perry Park Road will be needed for a maximum of approximately 5 days, between on March 15, 2017 and June 1, 2017, when weather allows the completion of the Project on five consecutive days; and

**WHEREAS**, the Douglas County Engineering Division will prepare a detour – signage plan prior to the closure of Perry Park Road, now, therefore,

**BE IT RESOLVED**, by the **BOARD OF COUNTY COMMISSIONERS OF THE COUNTY OF DOUGLAS, STATE OF COLORADO**, hereby authorizes the approval of the temporary road closure of Perry Park Road between Fox Farm Road and Perry Park Avenue for five (5) consecutive days between March 15, 2017 and June 1, 2017, when weather allows completion of the Project.

**BE IT FURTHER RESOLOVED** that a signed detour route, approved warning signs and barricades shall be erected at designated locations, as shown on the attached Exhibit A, prior to the temporary closure authorized herein.

**BE IT FURTHER RESOLVED** that such warning signs and barricades shall be removed and such road shall be reopened upon expiration of the temporary closure approved herein, or at such earlier time as determined by Douglas County Engineering Division.

PASSED AND ADOPTED this 14<sup>th</sup> of March, 2017, in Castle Rock, Douglas County, Colorado.

THE BOARD OF COUNTY COMMISSIONERS  
OF THE COUNTY OF DOUGLAS, COLORADO

By: Roger A. Partridge  
ROGER A. PARTRIDGE, Chair

ATTEST: Meghan McCann  
MEGHAN MCCANN, Clerk to the Board



## EXHIBIT A

### Traffic Control Plan for Douglas County Drainage Project DC HWY 105 MP 16.067 Site

Road to be closed for 5 days during work week to replace culvert that crosses under road. A detour route will be set up that will be approximately 6 miles long and travel through the town of Larkspur, CO. Traffic control devices will be in place for 24 hours a day until work is complete or at the end of the five day period.

Schedule Start: TBD

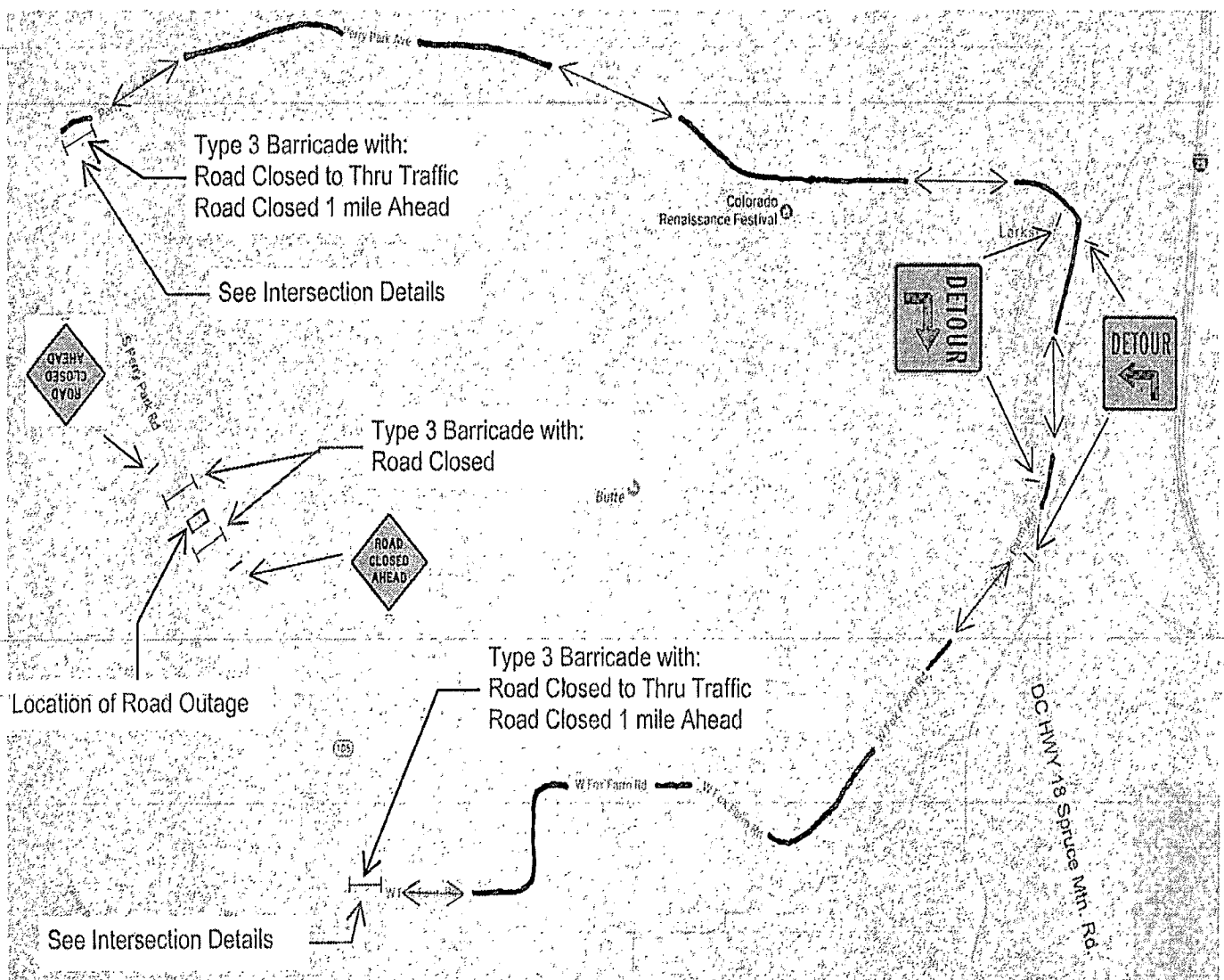
Schedule End: TBD

Work to be done for: Douglas County

Work to be done by: Rocky Mountain Excavating

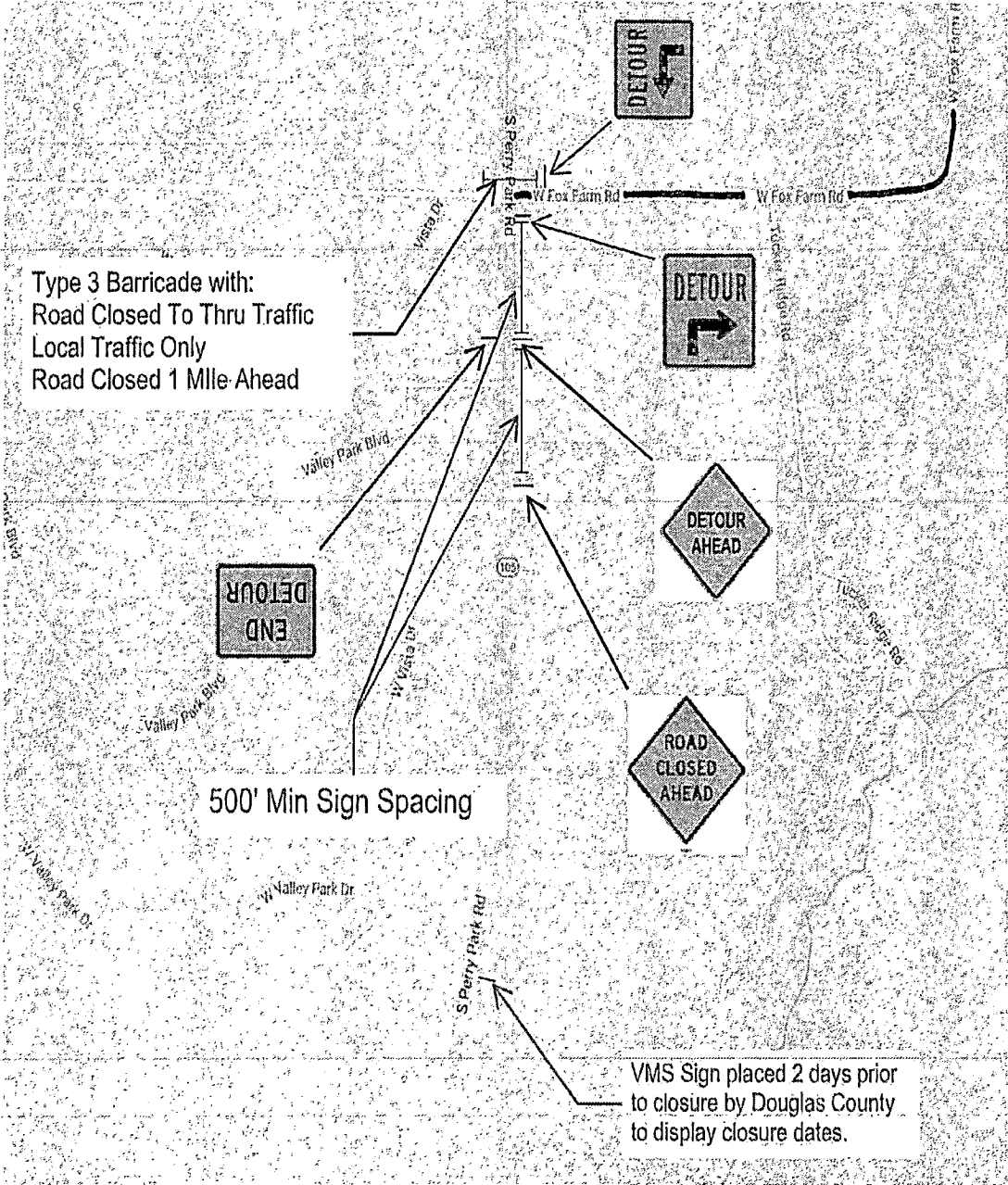
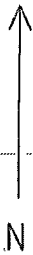
POC RME: Byron Pindell 303-841-0292

Emergency: 720-245-3885



↔ Detour Route

DC HWY 105/Perry Park Road and W Fox Farm Rd Intersection



DC HWY 105/ Perry Park Road at Perry Park Avenue Intersection

