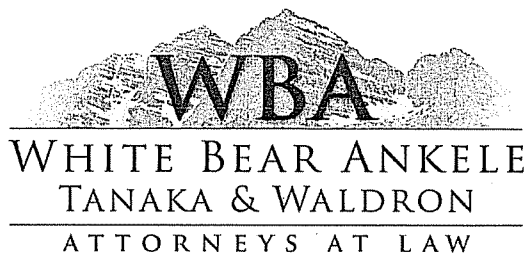


GARY R. WHITE
KRISTEN D. BEAR
WILLIAM P. ANKELE, JR.
JENNIFER GRUBER TANAKA
CLINT C. WALDRON
KRISTIN BOWERS TOMPKINS
ROBERT G. ROGERS

OF COUNSEL:
GEORGE M. ROWLEY
BLAIR M. DICKHONER



SEAN ALLEN
NEIL RUTLEDGE
ZACHARY P. WHITE
MEGAN L. TAGGART
CASEY K. LEKAHAL
TRISHA K. HARRIS
HEATHER L. HARTUNG
MEGAN J. MURPHY
AINSLEY E. BOCHNIAK
MARC D. SARMIENTO

December 30, 2016

**VIA ELECTRONIC SUBMISSION
AND ELECTRONIC MAIL**

Division of Local Government
E-filed via www.dola.colorado.gov/e-filing

Douglas County Clerk & Recorder
recording@douglas.co.us
elections@douglas.co.us

Douglas County Assessor
assessors@douglas.co.us

**Re: Promenade at Castle Rock Metropolitan District No. 1 (LGID#: 66525)
Map Filing Pursuant to §32-1-306, C.R.S. - No Change in Boundaries**

To Whom It May Concern:

Section 32-1-306, C.R.S., requires special districts to provide a current, accurate map of their boundaries to the Division of Local Government, County Clerk and Recorder and County Assessor by January 1 of each year. This letter is to inform you that the above-referenced district has not changed its boundaries; however it has revised its map. A copy of the updated map for the above-referenced District was electronically submitted on the Division's website and is also enclosed for your convenience.

Should you have any questions, please do not hesitate to contact me.

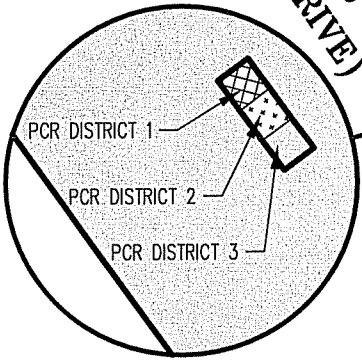
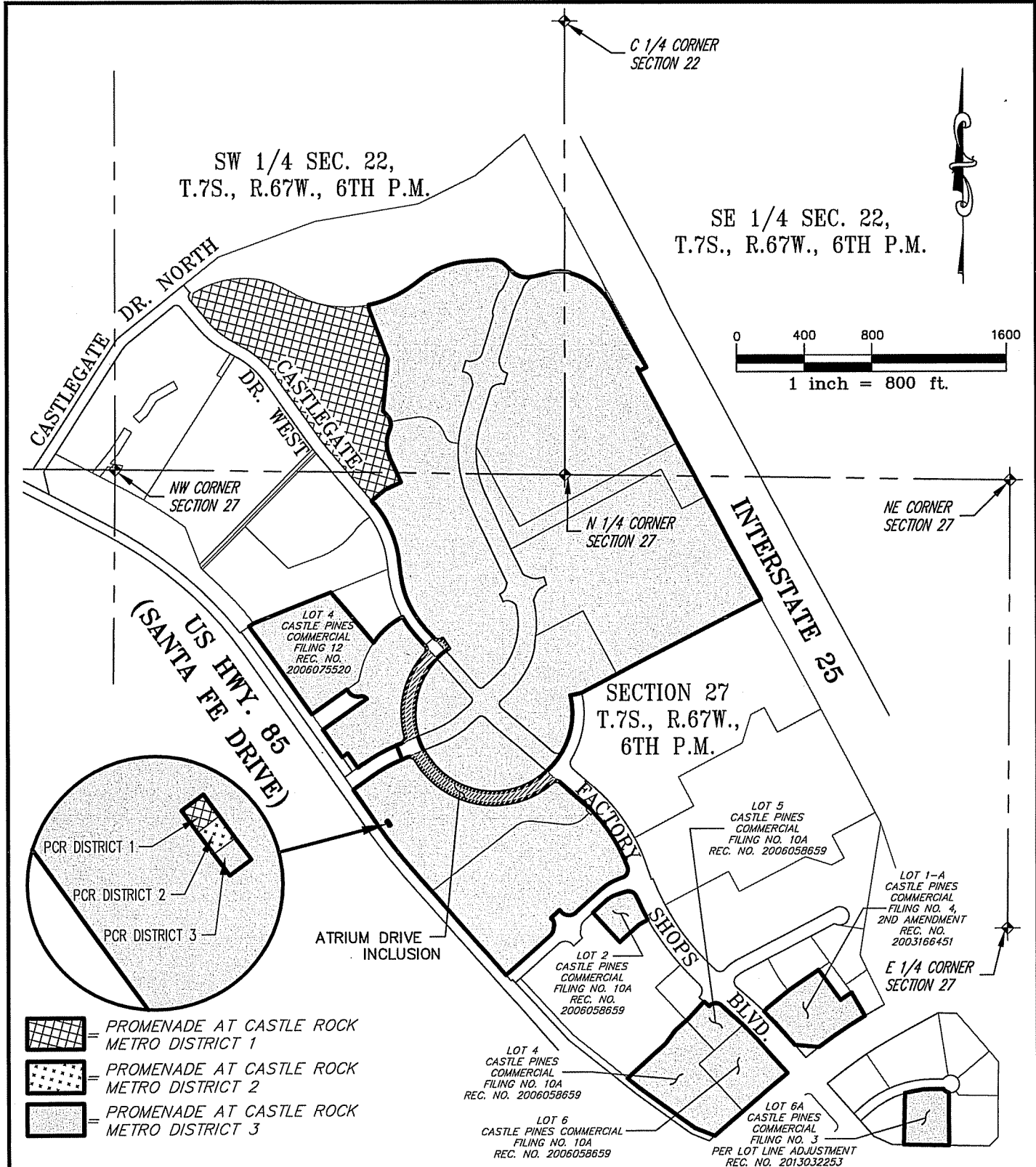
Sincerely,

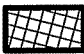


WHITE BEAR ANKELE TANAKA & WALDRON
Attorneys at Law



Megan L. Taggart

Attachment



-  = PROMENADE AT CASTLE ROCK METRO DISTRICT 1
-  = PROMENADE AT CASTLE ROCK METRO DISTRICT 2
-  = PROMENADE AT CASTLE ROCK METRO DISTRICT 3

PCR = PROMENADE
AT CASTLE ROCK



300 East Mineral Ave,
Suite 1
Littleton, Colorado 80122
Phone: (303)713-1898
Fax: (303)713-1897
www.aztecconsultants.com

JOB NUMBER: 93914-01

EXHIBIT
PROMENADE AT CASTLE ROCK METRO. DISTRICTS 1, 2 & 3
DOUGLAS COUNTY, COLORADO

DATE: 2015-02-13

SHT 1 OF 1