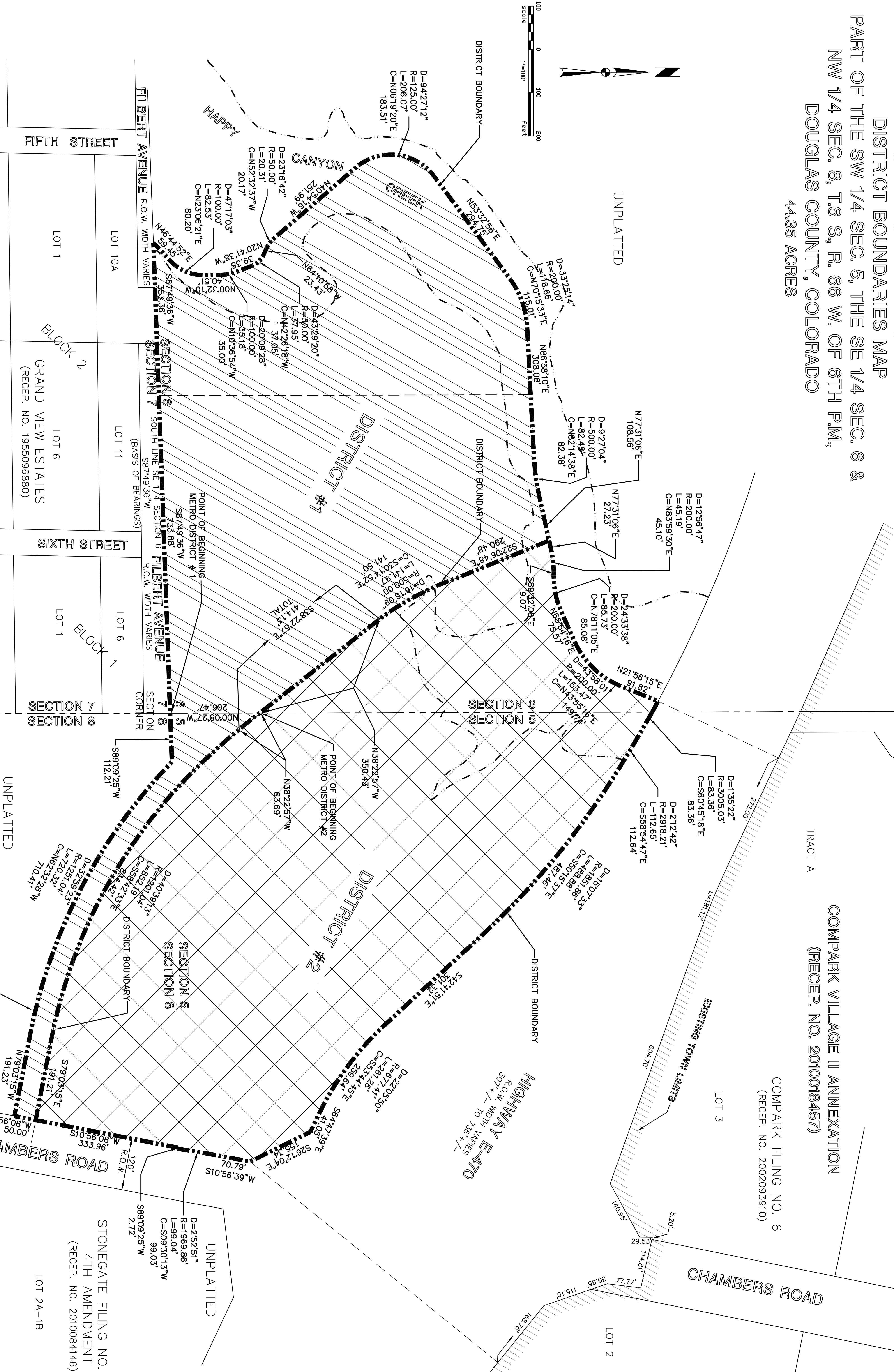


CHAMBERS HIGHPOINT METRO DISTRICT # 1 & 2

DISTRICT BOUNDARIES MAP

PART OF THE SW 1/4 SEC. 5, THE SE 1/4 SEC. 6 & NW 1/4 SEC. 8, T.6 S., R. 66 W. OF 6TH P.M., DOUGLAS COUNTY, COLORADO
44.35 ACRES



TRACT A
COMPARK VILLAGE II ANNEXATION
(RECEP. NO. 2010018457)

COMPARK FILING NO. 6
(RECEP. NO. 20020933910)

CHAMBERS ROAD

HIGHWAY E-470
R.O.W. WIDTH VARIES
507' +/- TO 736' +/-

CHAMBERS HIGHPOINT METROPOLITAN DISTRICT # 1 & 2

DISTRICT BOUNDARIES

REVISIONS		
Description	Date	By

DESIGNED	SGT
CHECKED	TGC
VIEW	BASE
FILE	01-BOUNDRIES.DWG

9222 TEDDY LANE
LOVE TREE, CO 80124
(303) 792-0557

DATE	SEPTEMBER 2016
SCALE	1" = 100'
JOB NO.	200-280
SHEETS	4
SHEET	1