

GARY R. WHITE
KRISTEN D. BEAR
WILLIAM P. ANKELE, JR.
JENNIFER GRUBER TANAKA
CLINT C. WALDRON
KRISTIN BOWERS TOMPKINS
ROBERT G. ROGERS

OF COUNSEL:
GEORGE M. ROWLEY
BLAIR M. DICKHONER



SEAN ALLEN
NEIL RUTLEDGE
ZACHARY P. WHITE
MEGAN L. TAGGART
CASEY K. LEKAHAL
TRISHA K. HARRIS
HEATHER L. HARTUNG
MEGAN J. MURPHY
AINSLEY E. BOCHNAK
MARC D. SARMIENTO

December 21, 2016

**VIA ELECTRONIC SUBMISSION
AND ELECTRONIC MAIL**

Division of Local Government

Douglas County Clerk & Recorder
recording@douglas.co.us

Douglas County Assessor
assessors@douglas.co.us

**Re: Maher Ranch Metropolitan District No. 4 (LGID#: 18092)
Map Filing Pursuant to §32-1-306, C.R.S. – No Change in Boundaries**

To Whom It May Concern:

Section 32-1-306, C.R.S., requires special districts to provide a current, accurate map of their boundaries to the Division of Local Government, County Clerk and Recorder and County Assessor by January 1 of each year. This letter is to inform you that the map that is currently on file with your office for the above-referenced District is the most current and accurate map. A copy of the current map is attached for your convenience.

Should you have any questions, please do not hesitate to contact me.

Sincerely,

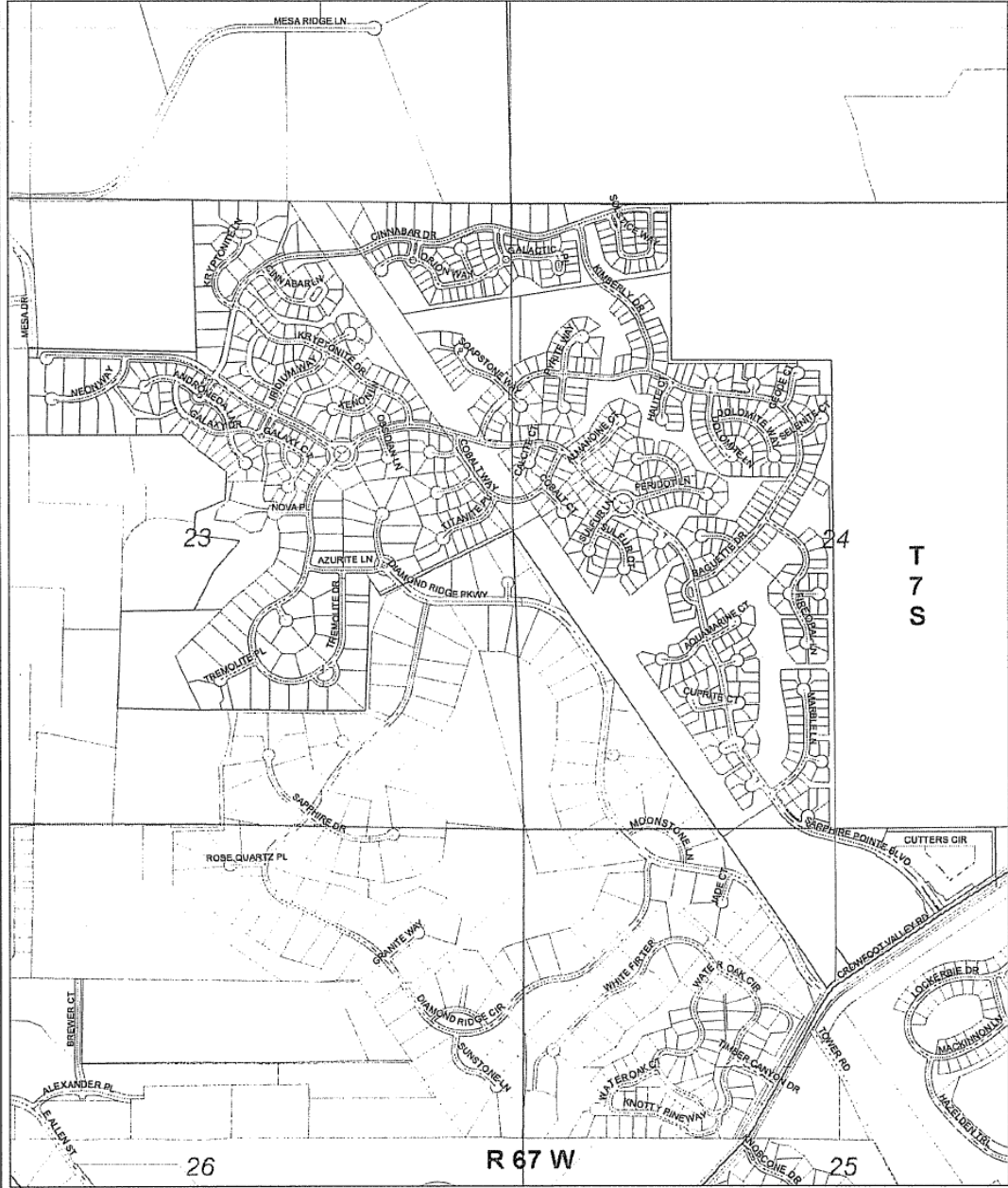
WHITE BEAR ANKELE TANAKA & WALDRON
Attorneys at Law

Megan J. Murphy, Esq.

Attachment
0322.0024; 801770

District Map

Maher Ranch Metropolitan District #4 Authority # 4250 DOUGLAS COUNTY



I, Blair Dickhoner, as representative of Maher Ranch MD No. 4 District, do hereby certify
 Name (printed) District name
 this map to be an accurate representation of the district's boundary as shown. Signed this 21st day of December, 2009.
 Signature: [Signature] Email: bdickhoner@wbape.com
 Title: Attorney Phone: (303) 858-1800

DISCLAIMER
 All lines and information ("Products") contained herein are for informational purposes only. Although our Products are believed to be accurate at the time of printing, Douglas County does not warrant that such Products are error-free. Douglas County provides these Products on an "as is" basis without representation of any kind, express or implied, including, but not limited to, accuracy or completeness of any information contained herein. No guarantee is made as to the use of any information contained herein. Douglas County provides these Products on an "as is" basis without representation of any kind, express or implied, including, but not limited to, accuracy or completeness of any information contained herein. The user acknowledges and agrees that the use of such Products is at the user's sole risk of loss.

General questions about this or any other Douglas County GIS product, including error corrections, comments, or other matters should be directed to the Douglas County GIS Director at 938-388-1418.

Douglas County GIS Division
 P.O. Box 6, Golden, CO 80401
 100 Third St.
 Golden, CO 80401

Legend
 — Maher Ranch Metropolitan District #4
 — Parcels
 — Sections
 — Townships
 — Major Roads
 — Local Roads

Vicinity Map
 Area of Interest

Scale: 1:9,600
 1 inch equals 800 feet