

WILLIAM P. ANKELE, JR.
JENNIFER GRUBER TANAKA
CLINT C. WALDRON
KRISTIN BOWERS TOMPKINS
ROBERT G. ROGERS
BLAIR M. DICKHONER

OF COUNSEL:
KRISTEN D. BEAR
K. SEAN ALLEN
GEORGE M. ROWLEY



ZACHARY P. WHITE
TRISHA K. HARRIS
HEATHER L. HARTUNG
MEGAN J. MURPHY
EVE M. G. VELASCO
ALLISON C. FOGG
LAURA S. HEINRICH
AUDREY G. JOHNSON
LISA CANCELANO

December 17, 2020

**VIA ELECTRONIC SUBMISSION
AND ELECTRONIC MAIL**

Division of Local Government
E-filed via www.dola.colorado.gov/e-filing

Douglas County Clerk and Recorder
301 Wilcox Street
Castle Rock, CO 80104
recording@douglas.co.us

Douglas County Assessor
301 Wilcox Street
Castle Rock, CO 80104
assessors@douglas.co.us

**Re: Two Bridges Metropolitan District (LGID#:66197)
Map Filing Pursuant to §32-1-306, C.R.S. – No Change in Boundaries**

To Whom It May Concern:

Section 32-1-306, C.R.S., requires special districts to provide a current, accurate map of their boundaries to the Division of Local Government (the “Division”), County Clerk and Recorder and County Assessor by January 1 of each year. This letter is to inform you that the map that is currently on file with your office for the above-referenced District is the most current and accurate map. A copy of the current map is attached for your convenience.

Should you have any questions, please do not hesitate to contact me.

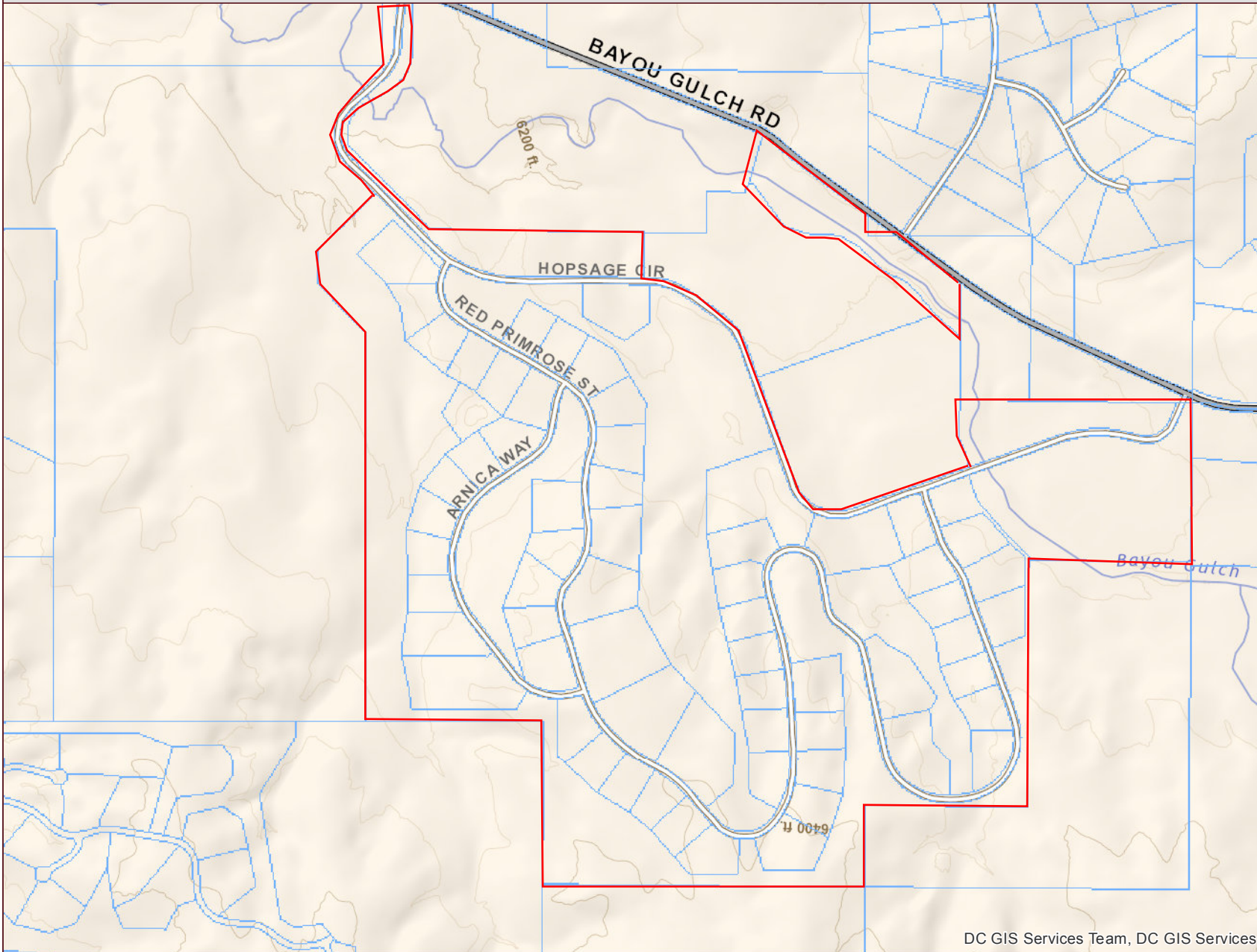
Sincerely,

WHITE BEAR ANKELE TANAKA & WALDRON
Attorneys at Law

Kaylin C. Hicks, Paralegal

Enclosure

2019 Map



Real Property

Parcel

Public Land Survey System

Township

Section

General Features

School

Private Road

Railroad

DC GIS Services Team, DC GIS Services

DISCLAIMER:

All data and information ("Products") contained herein are for informational purposes only. Although such Products are believed to be accurate at the time of printing, Douglas County does not warrant that such Products are error free. Douglas County provides these Products on an "as is" basis without warranties of any kind, either express or implied, including, but not limited to, warranties of title or implied warranties of merchantability or fitness for a particular purpose. Douglas County shall not be liable for any direct, indirect, incidental, special or consequential damages arising out of the use of such Products, or the inability to use such Products or out of any breach of any warranty. The user acknowledges and agrees that the use of such Products is at the sole risk of the user. General questions about this or any other Douglas County GIS products, including errors, omissions, corrections and/or updates should be directed to the Douglas County GIS Division at (303) 660-7416.

Douglas County GIS Division
Philip S. Miller Bldg., 100 Third St.
Castle Rock, Colorado 80104

