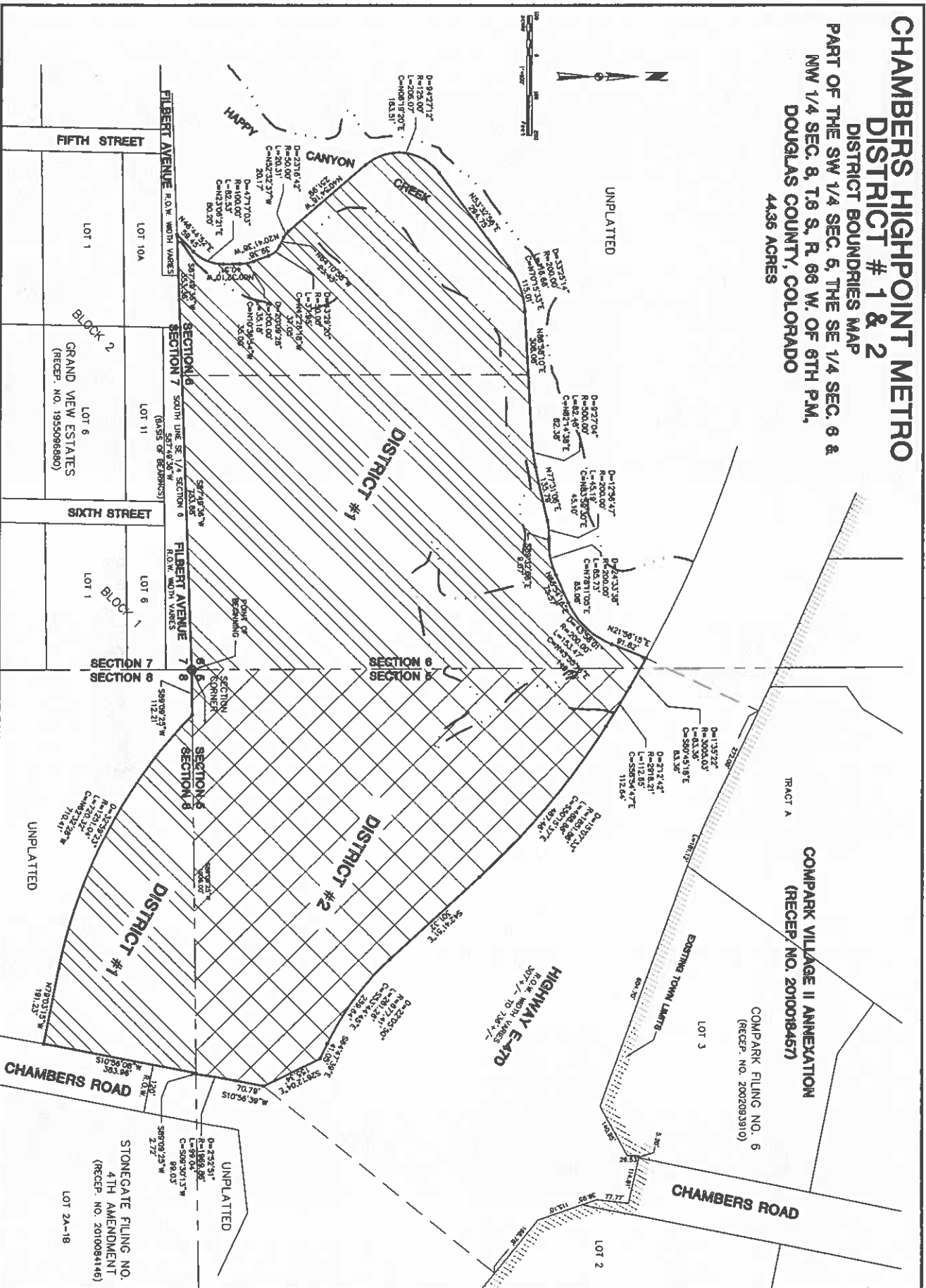


CHAMBERS HIGHPOINT METRO DISTRICT # 1 & 2

DISTRICT BOUNDRIES MAP

PART OF THE SW 1/4 SEC. 5, THE SE 1/4 SEC. 6 & NW 1/4 SEC. 8, T8 S., R. 66 W. OF 6TH P.M., DOUGLAS COUNTY, COLORADO
44.35 ACRES



CHAMBERS HIGHPOINT METROPOLITAN DISTRICT # 1 & 2		DISTRICT BOUNDRIES	
 1822 1827 LANE LONG VIEW, CO 80424 TEL: 719-594-1200 FAX: 719-594-1201	4 1	01-ADMINISTRATIVE 02-ENGINEERING 03-ESTIMATING 04-GENERAL MANAGER 05-INSPECTION 06-LEGAL 07-PLANNING 08-PROJECT MANAGER 09-RECORDS 10-SURVEYING 11-TRAFFIC ENGINEERING 12-UTILITY ENGINEERING 13-VEGETATION MANAGEMENT 14-WATER RESOURCES	1 1