

RESOLUTION NO. R-016- 059

**THE BOARD OF COUNTY COMMISSIONERS
OF THE COUNTY OF DOUGLAS, COLORADO**

**A RESOLUTION APPROVING THE TEMPORARY ROAD CLOSURE OF
PONDEROSA DRIVE BETWEEN NORTH PINERY PARKWAY AND THE MISTY
PINES SUBDIVISION**

WHEREAS, Timbers Development Group is requesting a temporary road closure of Ponderosa Drive in order to install sanitary sewer, water, storm sewer, curb, gutter and sidewalk improvements and for roadway paving; and

WHEREAS, Ponderosa Drive is dedicated public right-of-way and is a County maintained roadway; and

WHEREAS, the Board of County Commissioners (the "Board") has authority to temporarily prohibit the operation of vehicles upon highways within its jurisdiction, pursuant to section 42-4-106(6), C.R.S.; and

WHEREAS, the temporary road closure of Ponderosa Drive will be needed for approximately five (5) months, beginning in May 2016, upon the issuance of a Notice to Proceed and mobilization of construction, and ending in October 2016, upon the issuance of substantial completion, unless otherwise extended by resolution of the Board; and

WHEREAS, residents of the Misty Pines subdivision will have alternative locations to access the subdivision, and Douglas County Engineering Division will approve a signage plan prior to the closure of Ponderosa Drive; now, therefore,

BE IT RESOLVED, by the **BOARD OF COUNTY COMMISSIONERS OF THE COUNTY OF DOUGLAS, STATE OF COLORADO**, that pursuant to section 42-4-106(6), C.R.S., the temporary road closure of Ponderosa Drive between North Pinery Parkway and the Misty Pines subdivision, beginning in May 2016 upon the issuance of a Notice to Proceed and mobilization of construction, and ending no later than October 2016 upon the issuance of substantial completion, is hereby approved.

BE IT FURTHER RESOLVED that a signage plan shall be submitted and approved by the Douglas County Engineering Division, and approved warning signs and barricades shall be erected at designated locations prior to the temporary closure authorized herein.

BE IT FURTHER RESOLVED that such warning signs and barricades shall be removed and such road shall be reopened upon expiration of the temporary closure approved herein, or at such earlier time as the Board, by subsequent action, directs that the temporary closure be terminated.

PASSED AND ADOPTED this ____ of May, 2016, in Castle Rock, Douglas County, Colorado.

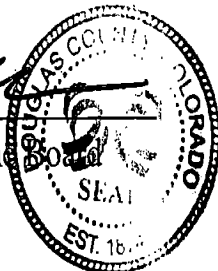
**THE BOARD OF COUNTY COMMISSIONERS
OF THE COUNTY OF DOUGLAS, COLORADO**

By: _____

DAVID A. WEAVER, Chair

ATTEST:

CODIE BRENNER, Clerk to the Board
meghan mccann



April 18, 2016

Mr. Chuck Smith

Douglas County Engineering Department

101 Third Street

Castle Rock, Colorado 80104

Re: Road Closure – Ponderosa Drive

Dear Mr. Smith,

Timbers Development Group the owners of Pinery Filing 27 Phase 2 is requesting permission to close the current section of Ponderosa Drive which is gravel from North Pinery Parkway (east end) to 100 feet east of Selly Drive (west end) in Pinery Filing 27 Phase 2. The closure is to install sanitary sewer, water, storm sewer, curb, gutter and sidewalk, asphalt, and utilities (electric, gas, cable). The closure will take place from May 2016 to October 2016.

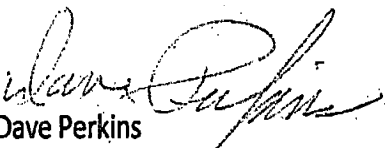
We have contacted South Metro Fire Rescue, Douglas County Sheriff Office, Douglas County School District, and Misty Pines HOA regarding the closure.

The attached letters are from the South Metro District Fire Department and the Douglas County Sheriff Office regarding the closure.

South Metro Fire Rescue and the Douglas county Sheriff Office will be notified of the actual closure date along with a copy of the final traffic plan prior to the closure.

Attached is a map showing the closure.

Thank You


Dave Perkins

Timber Development Group

SOUTH METRO FIRE RESCUE



April 13, 2016

Dave Perkins
Timbers Development Group

CC: Chuck Smith – Douglas County Engineering Department
Audra Garton-Norvell – Douglas County Sheriff's Department

Mr. Perkins,

South Metro Fire Rescue (SMFR) has reviewed your request to close the current gravel section of Ponderosa Drive from North Pinery Parkway (east end) to 100 feet east of Selly Drive (west end) in Pinery Filing 27 Phase 2. The closure is indicated to take place from approximately May 2016 to October 2016 to facilitate installation of sanitary sewer, water, storm pipe, curb, gutter, sidewalk and paving.

Our review has concluded the temporary closure will not significantly impact emergency response times to the affected areas during the period of closure and as a result SMFR has no objections to this proposed temporary construction closure.

SMFR shall be notified of the actual closure dates along with a copy of the final traffic plan prior to the closure.

Thank you,

Aaron Miller
Plan Reviewer
720-989-2246
Aaron.Miller@southmetro.org

April 12, 2016

Mr. Tony G. Spurlock
Douglas County Sheriff Office

Subject: Road Closure - Ponderosa Drive

Dear Sheriff Spurlock,

We are requesting permission from Douglas County Board of County Commissioners to close Ponderosa Drive from North Pinery Parkway (east end) to 100 feet east of Selly Drive (west end) in Pinery Filing 27 Phase 2. See attached map for location and alternate routes. At present this section of road is gravel. We will need to close the road from May 2016 to October 2016 to install sanitary sewer, water, storm pipe, curb, gutter, and sidewalk, and paving.

We will notify your office in advance of the actual day the road will be closed.

If you have any questions, please call me at 303-841-5044 (o) or 303-618-8118 ©

Thank you for your help in this matter. Mr. Chuck Smith of the engineering department requested I get a response for this request from you. Please fill out the request below and add comments if you have some.

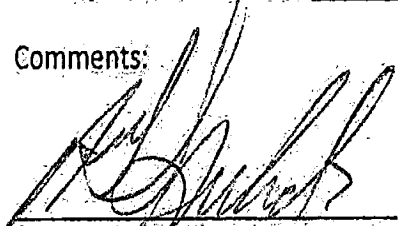
Dave Perkins

Timbers Development Group

We have no objection to the closure X

We object to the closure _____

Comments:



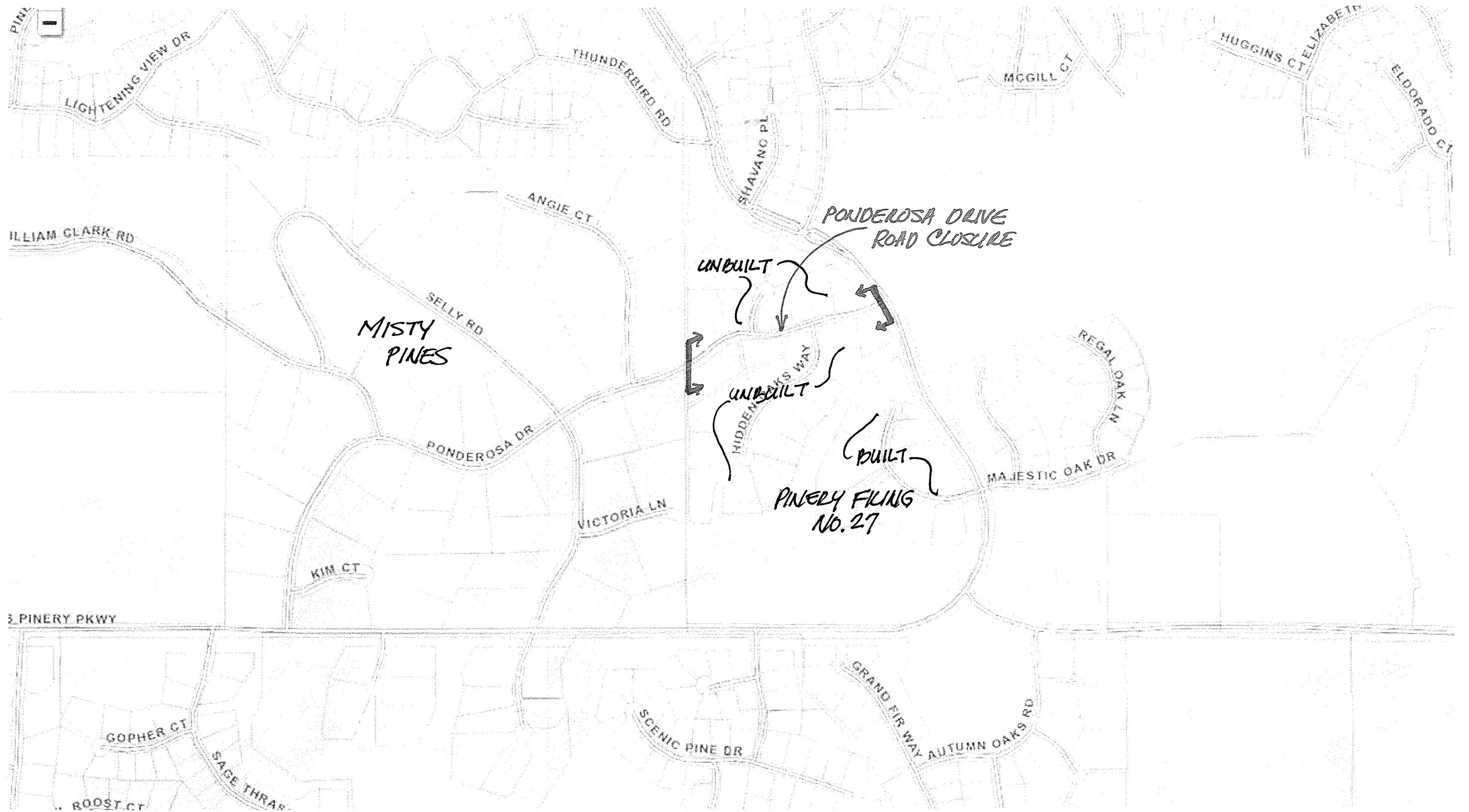
Signature

4-12-16

Date

Sheriff

Title



Vicinity Map