



Robin G. Bacon
Assistant District Manager

303-858-1800
Rbacon@wbapc.com

December 18, 2023

**VIA ELECTRONIC SUBMISSION
AND ELECTRONIC MAIL**

Division of Local Government
E-filed via www.dola.colorado.gov/e-filing

Douglas County Clerk and Recorder
301 Wilcox Street
Castle Rock, CO 80104
clerk@douglas.co.us

Douglas County Assessor
301 Wilcox Street
Castle Rock, CO 80104
assessors@douglas.co.us

**Re: Anthology West Metropolitan District No. 6 (LGID#:66683)
Map Filing Pursuant to §32-1-306, C.R.S. – No Change in Boundaries**

To Whom It May Concern:

Section 32-1-306, C.R.S., requires special districts to provide a current, accurate map of their boundaries to the Division of Local Government, County Clerk and Recorder and County Assessor by January 1 of each year. This letter is to inform you that the map that is currently on file with your office for the above-referenced District is the most current and accurate map. A copy of the current map is attached for your convenience.

Should you have any questions, please do not hesitate to contact me.

Sincerely,

WHITE BEAR ANKELE TANAKA & WALDRON
Attorneys at Law

Robin Bacon

Robin G. Bacon, Assistant District Manager

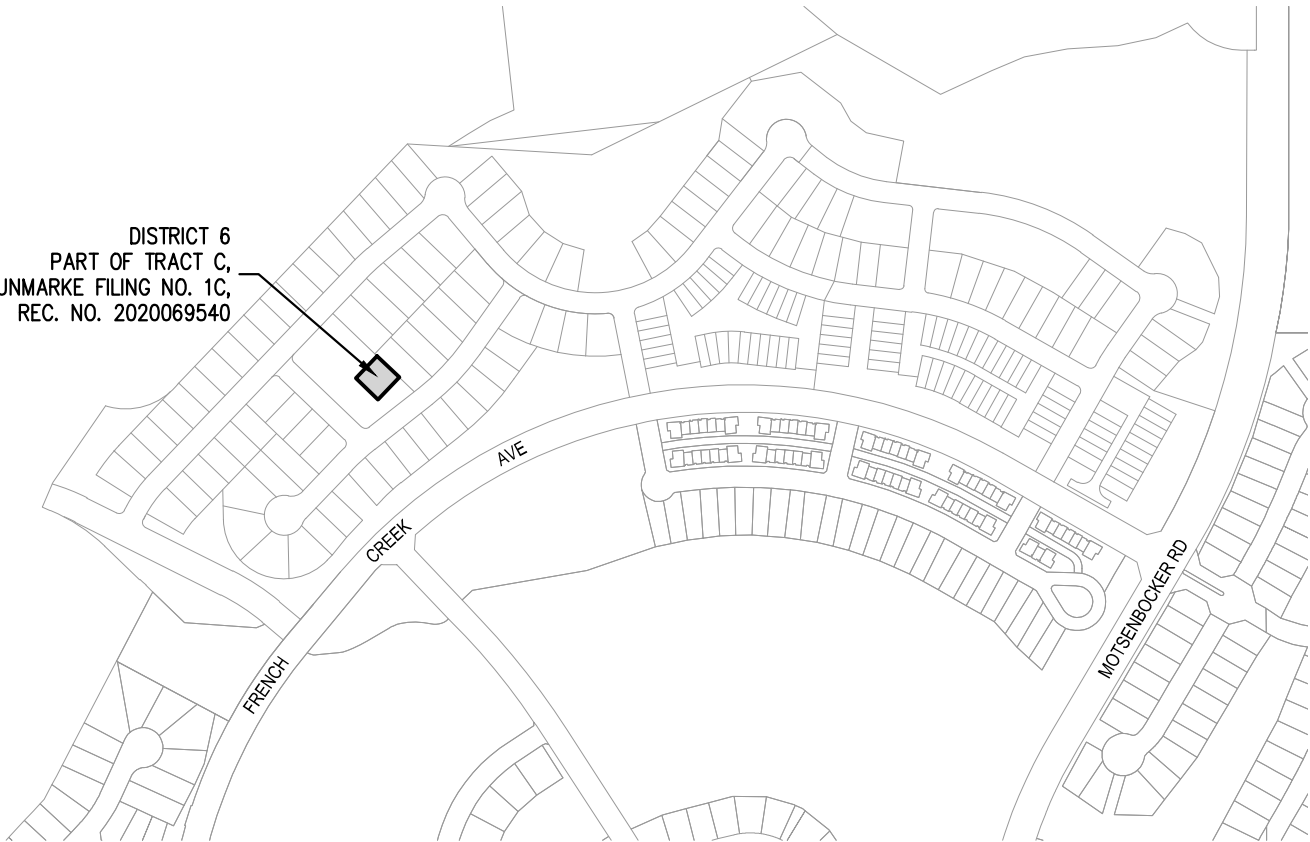
Enclosure

LGID#: 66683



ILLUSTRATION METRO DISTRICT 6

DISTRICT 6
PART OF TRACT C,
SUNMARKE FILING NO. 1C,
REC. NO. 2020069540



SCALE: 1" = 500'



DISTRICT 6

NOTE:

THIS EXHIBIT DOES NOT REPRESENT A MONUMENTED LAND SURVEY.
IT IS INTENDED TO DEPICT ONLY THE ATTACHED DESCRIPTION.

ISSUE DATE: 9-8-2020	
DATE	REVISION COMMENTS



ILLUSTRATION
METRO DISTRICT 6

PROJECT #: 170924
CHECKED BY: AWM
DRAWN BY: KDW/TWG
SHEET NUMBER
1
1 OF 1

Plotted: TUE 09/08/20 8:20:41A By: Tom Grubestic Filepath: p:\170924survey\district boundaries\district 6 boundary.dwg Layout: layout1

NO CHANGES ARE TO BE MADE TO THIS DRAWING WITHOUT WRITTEN PERMISSION OF HARRIS KOCHER SMITH.