

GARY R. WHITE
KRISTEN D. BEAR
WILLIAM P. ANKELE, JR.
JENNIFER GRUBER TANAKA
CLINT C. WALDRON
KRISTIN BOWERS TOMPKINS
ROBERT G. ROGERS



SEAN ALLEN
GEORGE M. ROWLEY
NEIL RUTLEDGE
ZACHARY P. WHITE
MEGAN L. TAGGART
MATTHEW T. ASHLEY
CASEY K. LEKAHAL
TRISHA K. HARRIS

December 29, 2015

VIA ELECTRONIC SUBMISSION
AND ELECTRONIC MAIL

Division of Local Government

Douglas County Clerk & Recorder
recording@douglas.co.us

Douglas County Assessor
assessors@douglas.co.us

Re: Maher Ranch Metropolitan District No. 4 (LGID#: 18092)
Map Filing Pursuant to §32-1-306, C.R.S. – No Change in Boundaries

To Whom It May Concern:

Section 32-1-306, C.R.S., requires special districts to provide a current, accurate map of their boundaries to the Division of Local Government, County Clerk and Recorder and County Assessor by January 1 of each year. This letter is to inform you that the map that is currently on file with your office for the above-referenced District is the most current and accurate map. A copy of the current map is attached for your convenience.

Should you have any questions, please do not hesitate to contact me.

Sincerely,

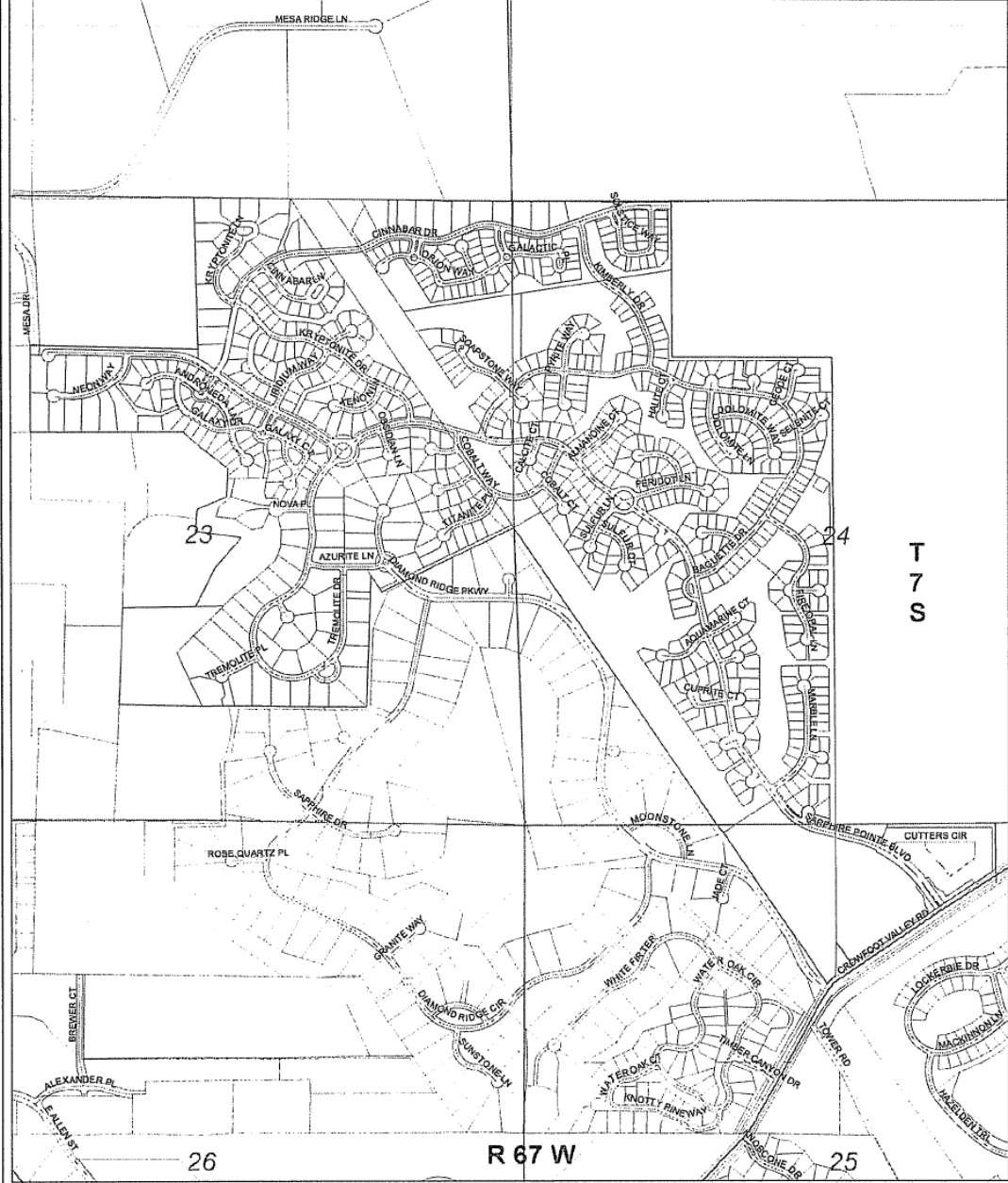
WHITE BEAR ANKELE TANAKA & WALDRON
Attorneys at Law

Amanda Johnson-Gorton
Paralegal

Attachment
0322.0024; 723686

District Map

Maher Ranch Metropolitan District #4 Authority # 4250 DOUGLAS COUNTY



I, Blair Dickhoner, as representative of Maher Ranch MD No. 4 District, do hereby certify
 Name (printed) District name

this map to be an accurate representation of the district's boundary as shown. Signed this 21st day of December, 2009.

[Signature] bdickhoner@wbape.com
 Signature Email

Attorney (303) 858-1800
 Title Phone

DISCLAIMER
 All lines and information ("Products") contained herein are for informational purposes only. Although our Products are believed to be accurate at the time of printing, Douglas County does not warrant that such Products are error-free. Douglas County provides these Products on an "as is" basis without representation of any kind, express or implied, including, but not limited to, accuracy or completeness of information contained herein. No guarantee is made as to the accuracy or completeness of information contained herein. Douglas County and its employees, contractors, agents, and representatives assume no liability for any errors or omissions in the Products or for the use of such Products in any way. The user acknowledges and agrees that the use of such Products is at the user's sole risk of loss.

General questions about this or any other Douglas County GIS product, including error messages, comments, or other matters should be directed to the Douglas County GIS Director at 888-888-1800.

Douglas County GIS Division
 P.O. Box 6, Golden, CO 80601
 Contact: Doug Givens

Legend

- Maher Ranch Metropolitan District #4
- Parcels
- Sections
- Townships
- Major Roads
- Local Roads

800 0 800
 Feet
 1:9,600
 1 inch equals 800 feet

Vicinity Map

Area of Interest