

SOUTHEAST PUBLIC IMPROVEMENT
METROPOLITAN DISTRICT

c/o Mulhern MRE, Inc.
2 Inverness Drive East #200
Englewood, CO 80112
303-649-9857 Fax 303-414-0671

December 29, 2015

Colorado Department of Local Affairs
Division of Local Governments
1313 Sherman Street, #518
Denver, CO 80203
303-866-4819 fax
Elizabeth.villegas@state.co.us

Douglas County Clerk and Recorder
recorder@douglas.co.us

Douglas County Assessor
assessor@douglas.co.us

Arapahoe County Clerk and Recorder
clerk@arapahoegov.com

Arapahoe County Assessor
assessor@arapahoegov.com

City and County of Denver
assessor@denvergov.org
clerkandrecorder@denvergov.org

Re: Annual Map Filing, Southeast Public Improvement Metropolitan District

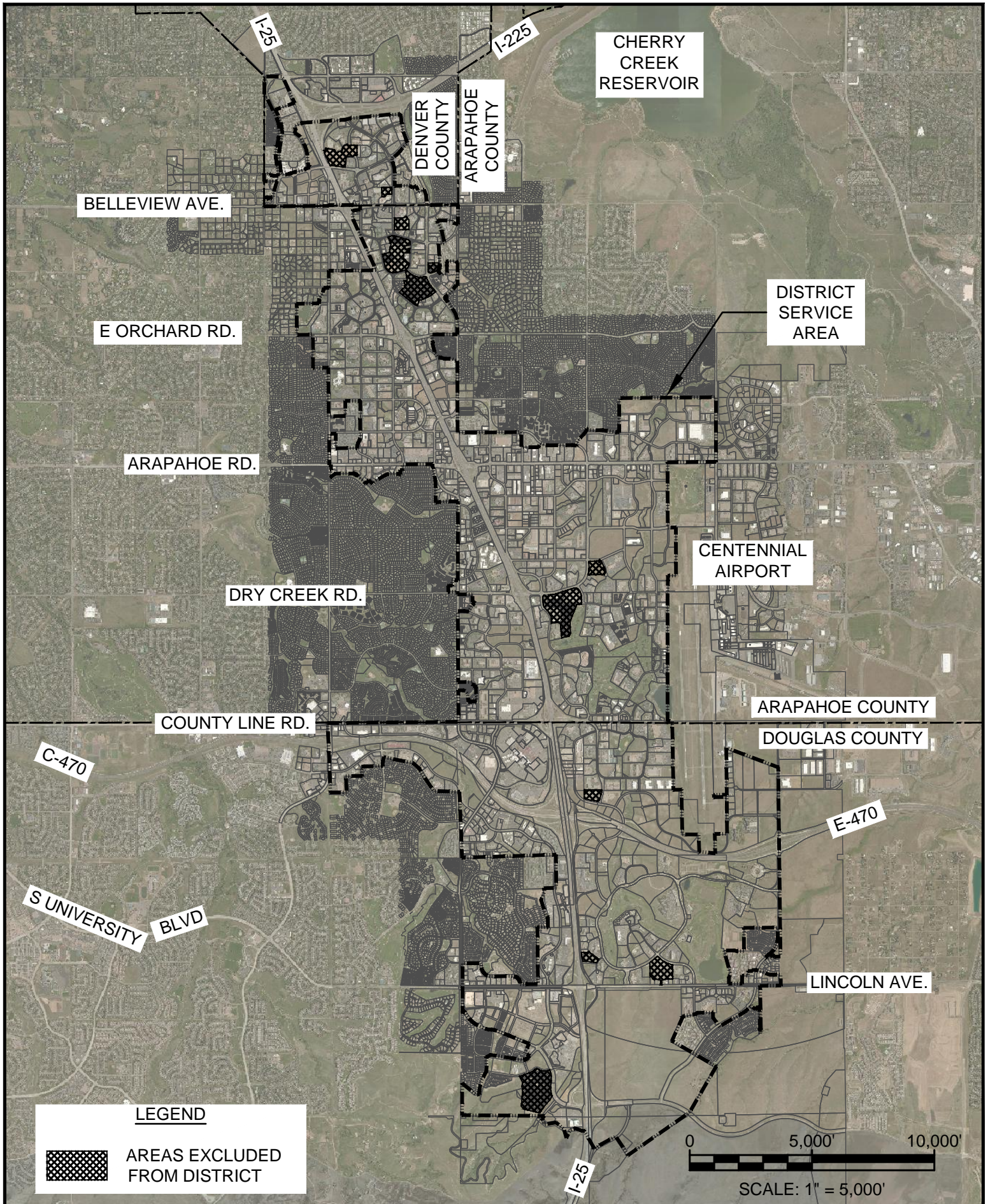
To Whom It May Concern:

Please see the attached current boundary map for the Southeast Public Improvement Metropolitan District per the statutory requirement for 2016.


Thank you,
SOUTHEAST PUBLIC IMPROVEMENT METROPOLITAN DISTRICT

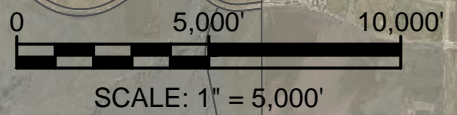
Kelly Conover
Administrative Assistant

Enclosed



LEGEND

 AREAS EXCLUDED FROM DISTRICT



**SOUTHEAST PUBLIC IMPROVEMENT METROPOLITAN DISTRICT
ARAPAHOE COUNTY, DOUGLAS COUNTY & DENVER COUNTY**


12/23/2015

**Mulhern
MRE, Inc.**
Managing Resources thru Engineering