

GARY R. WHITE  
KRISTEN D. BEAR  
WILLIAM P. ANKELE, JR.  
JENNIFER GRUBER TANAKA  
CLINT C. WALDRON  
KRISTIN BOWERS TOMPKINS  
ROBERT G. ROGERS



SEAN ALLEN  
GEORGE M. ROWLEY  
NEIL RUTLEDGE  
ZACHARY P. WHITE  
MEGAN L. TAGGART  
MATTHEW T. ASHLEY  
CASEY K. LEKAHAL  
TRISHA K. HARRIS

December 29, 2015

**VIA ELECTRONIC SUBMISSION  
AND ELECTRONIC MAIL**

Division of Local Government

Douglas County Clerk & Recorder  
[recording@douglas.co.us](mailto:recording@douglas.co.us)  
[elections@douglas.co.us](mailto:elections@douglas.co.us)

Douglas County Assessor  
[assessors@douglas.co.us](mailto:assessors@douglas.co.us)

**Re: Promenade at Castle Rock Metropolitan District No. 3 (LGID#: 66527)  
Map Filing Pursuant to §32-1-306, C.R.S. – Change in Boundaries**

To Whom It May Concern:

Section 32-1-306, C.R.S., requires special districts to provide a current, accurate map of their boundaries to the Division of Local Government (the “Division”), County Clerk and Recorder and County Assessor by January 1 of each year. A copy of the updated map for the above-referenced District was electronically submitted on the Division’s website and is also enclosed for your convenience.

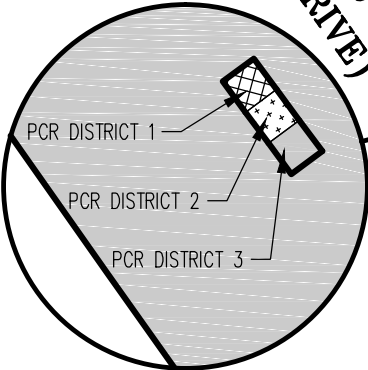
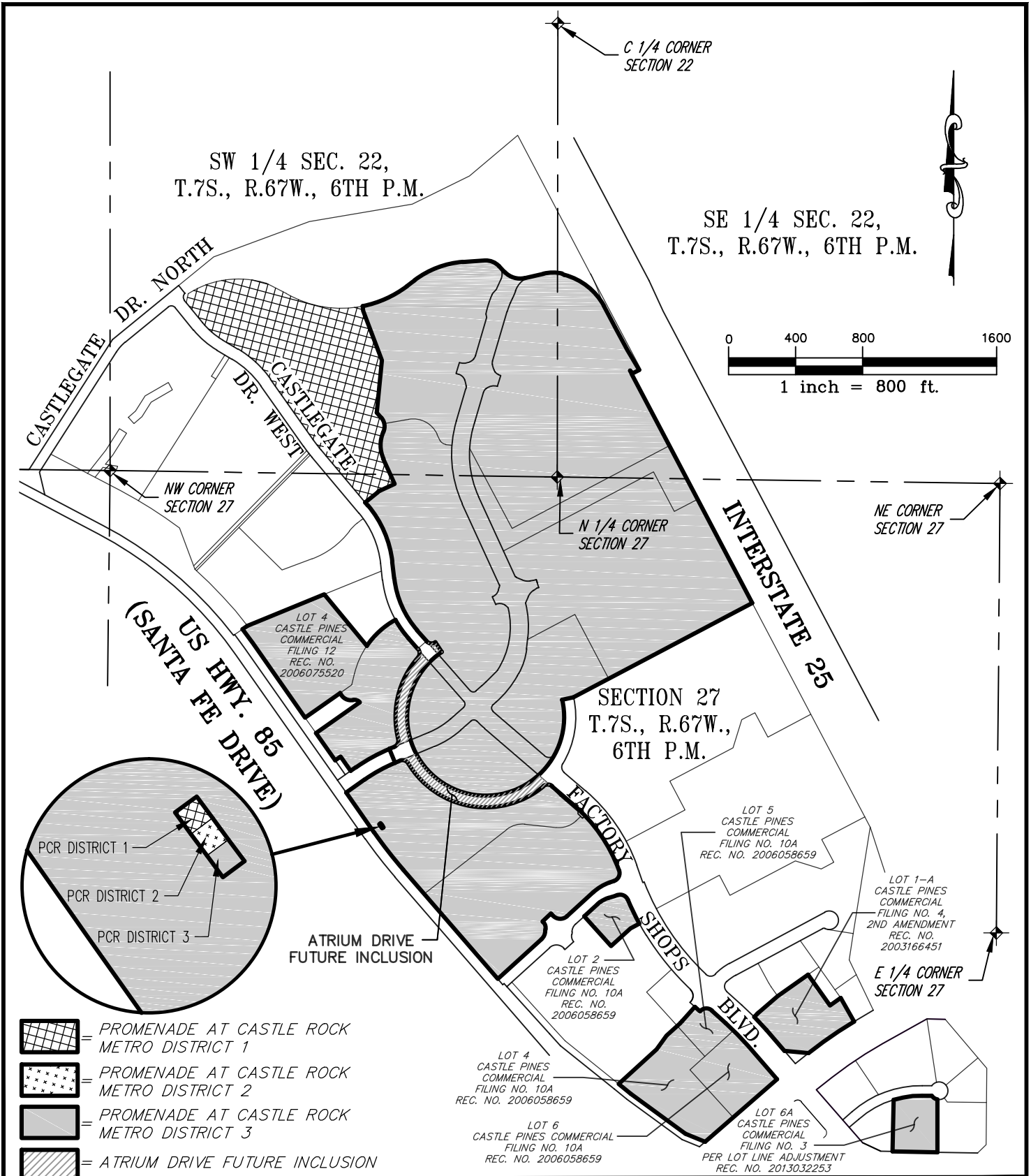
Should you have any questions, please do not hesitate to contact me.



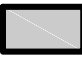

Sincerely,

WHITE BEAR ANKELE TANAKA & WALDRON  
Attorneys at Law

Nadia R. Hernandez  
Paralegal

Attachment



-  = PROMENADE AT CASTLE ROCK METRO DISTRICT 1
-  = PROMENADE AT CASTLE ROCK METRO DISTRICT 2
-  = PROMENADE AT CASTLE ROCK METRO DISTRICT 3
-  = ATRIUM DRIVE FUTURE INCLUSION

PCR = PROMENADE AT CASTLE ROCK

**AZTEC**  
CONSULTANTS, INC.

300 East Mineral Ave,  
Suite 1  
Littleton, Colorado 80122  
Phone: (303)713-1898  
Fax: (303)713-1897  
[www.aztecconsultants.com](http://www.aztecconsultants.com)

JOB NUMBER: 93914-01

**EXHIBIT**  
PROMENADE AT CASTLE ROCK METRO. DISTRICTS 1,2 & 3  
DOUGLAS COUNTY, COLORADO

DATE: 2015-02-13

SHT 1 OF 1