



ANNETTE M. CATES, PARALEGAL ASSISTANT
DIRECT DIAL: (303) 839-3733
acates@spencerfane.com

File No. 5114315.0008

December 30, 2015

Division of Local Government
1313 Sherman Street, Room 521
Denver, Colorado

DLG E-Portal

Douglas County Assessor
301 Wilcox Street
Castle Rock, CO 80104

assessors@douglas.co.us

Douglas County Clerk and Recorder
301 Wilcox Street, 1st Floor
Castle Rock, CO 80104

elections@douglas.co.us

**Re: Cherry Creek South Metropolitan District No. 11
Boundary Map**

Dear Sir or Madam:

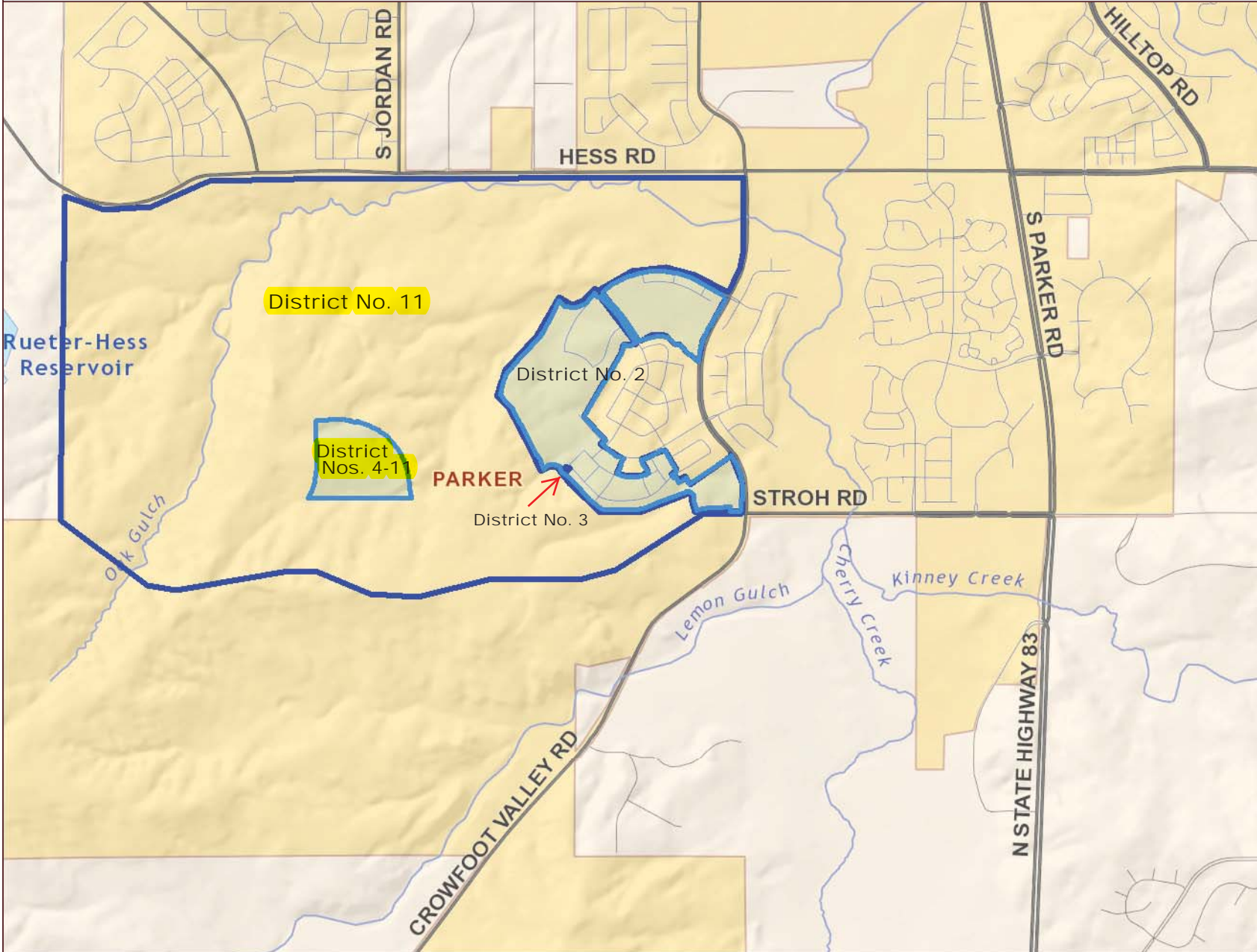
Pursuant to Section 32-1-306, C.R.S., attached to this correspondence is a current map of the boundaries of the above-referenced District.

Please do not hesitate to contact our office should you have any questions or require additional information.

Sincerely,

/s/ Annette M. Cates
Annette M. Cates,
Paralegal Assistant

Cherry Creek South Metro Districts 2-11



DISCLAIMER:

All data and information ("Products") contained herein are for informational purposes only. Although such Products are believed to be accurate at the time of printing, Douglas County does not warrant that such Products are error free. Douglas County provides these Products on an "as is" basis without warranties of any kind, either express or implied, including, but not limited to, warranties of title or implied warranties of merchantability or fitness for a particular purpose. Douglas County shall not be liable for any direct, indirect, incidental, special or consequential damages arising out of the use of such Products, or the inability to use such Products or out of any breach of any warranty. The user acknowledges and agrees that the use of such Products is at the sole risk of the user. General questions about this or any other Douglas County GIS products, including errors, omissions, corrections and/or updates should be directed to the Douglas County GIS Division at (303) 660-7416.

Douglas County GIS Division
Philip S. Miller Bldg., 100 Third St.
Castle Rock, Colorado 80104

