

EXHIBIT A

LEGAL DESCRIPTION

DISTRICT NO. 2:

A PARCEL OF LAND LOCATED IN THE EAST HALF OF SECTION 6, TOWNSHIP 7 SOUTH, RANGE 66 WEST OF THE SIXTH PRINCIPAL MERIDIAN, COUNTY OF DOUGLAS, STATE OF COLORADO, BEING MORE PARTICULARLY DESCRIBED AS FOLLOWS:

COMMENCING AT THE SOUTHWEST CORNER OF SAID EAST HALF OF SECTION 6 AND CONSIDERING THE WEST LINE OF SAID EAST HALF OF SECTION 6 TO BEAR NORTH 00°07'39" EAST WITH ALL BEARINGS CONTAINED HEREIN BEING RELATIVE THERETO;

THENCE NORTH 00°07'39" EAST, A DISTANCE OF 1500.00 FEET ALONG SAID WEST LINE TO THE POINT OF BEGINNING;

THENCE CONTINUING NORTH 00°07'39" EAST, A DISTANCE OF 50.00 FEET ALONG SAID WEST LINE;

THENCE SOUTH 89°52'21" EAST, A DISTANCE OF 100.00 FEET;

THENCE SOUTH 00°07'39" WEST, A DISTANCE OF 50.00 FEET;

THENCE NORTH 89°52'21" WEST, A DISTANCE OF 100.00 FEET TO THE POINT OF BEGINNING;

CONTAINING A CALCULATED AREA OF 5,000 SQUARE FEET, OR 0.1148 ACRES, MORE OR LESS.

I, BRIAN J. PFOHL, A SURVEYOR LICENSED IN THE STATE OF COLORADO, DO HEREBY CERTIFY THAT THE ABOVE LEGAL DESCRIPTION AND ATTACHED EXHIBIT WERE PREPARED BY ME OR UNDER MY DIRECT SUPERVISION AND CHECKING.



BRIAN J. PFOHL, P.L.S. 38445
FOR AND ON BEHALF OF MANHARD CONSULTING

HESS RANCH DISTRICT FORMATION

DOUGLAS COUNTY, COLORADO

DIRECTOR PARCELS EXHIBIT

PROJ MGR.: JMR
DRAWN BY: BJP
DATE: 07/10/15
SCALE: N/A

SHEET

1 OF 2

OOS.RSRD01.L1



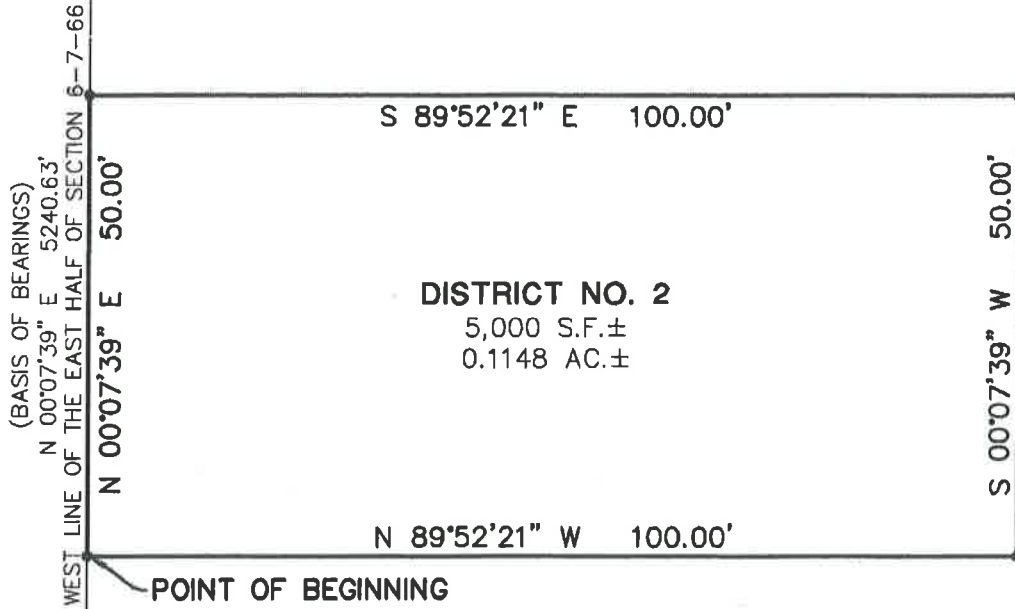
8908 E Arapahoe Court, Suite 110, Centennial, CO 80112 ph:303.708.0500 fx:303.708.0400 manhard.com
Civil Engineers • Surveyors • Water Resource Engineers • Water & Wastewater Engineers
Construction Managers • Environmental Scientists • Landscape Architects • Planners

7/10/2015 3:36 PM Dwg Name: P:\Stroh\SRD02-DistForm\awa\Surv\Exhibits\Surv\OOS.RSRD01.L1-S1.2.dwg Updated By: apuckett

EXHIBIT A



FOUND 2.5" ALUMINUM CAP
STAMPED PLS 22088, 2002



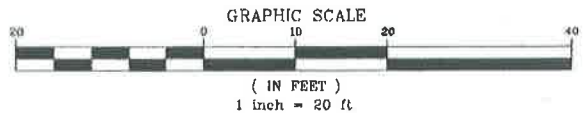
1500.00'



POINT OF COMMENCING
FOUND 5"x7" STONE AT CORNER

NOTE:

- DENOTES CHANGE OF DIRECTION ONLY. THIS EXHIBIT DOES NOT REPRESENT A MONUMENTED SURVEY. IT IS INTENDED ONLY TO DEPICT THE ATTACHED LEGAL DESCRIPTION.



Manhard
CONSULTING LTD

8008 E. Arapahoe Court, Suite 110, Centennial, CO 80112 ph:303.708.0500 fx:303.708.0400 manhard.com
Civil Engineers • Surveyors • Water Resource Engineers • Water & Wastewater Engineers
Construction Managers • Environmental Scientists • Landscape Architects • Planners

HESS RANCH DISTRICT FORMATION	
DOUGLAS COUNTY, COLORADO	
DIRECTOR PARCELS EXHIBIT	
PROJ. MGR.: <u>JMR</u>	SHEET
DRAWN BY: <u>BJP</u>	2 OF 2
DATE: <u>07/10/15</u>	00S.RSRD01.L1
SCALE: <u>1" = 20'</u>	

7/10/2015 3:35 PM Dwg Name: P:\Stred\SRD02-DistForm.dwg \Surv\Exhibits_Surv\00S.RSRD01.L1-S12.dwg Updated By: gbrackett