



Jenna J. Slabaugh
Paralegal

303-858-1800
jslabaugh@wbapc.com

December 1, 2023

**VIA ELECTRONIC SUBMISSION
AND ELECTRONIC MAIL**

Division of Local Government
E-filed via www.dola.colorado.gov/e-filing

Douglas County Clerk and Recorder
301 Wilcox Street
Castle Rock, CO 80104
recording@douglas.co.us

Douglas County Assessor
301 Wilcox Street
Castle Rock, CO 80104
assessors@douglas.co.us

**Re: Cielo Metropolitan District (LGID#:66710)
Map Filing Pursuant to §32-1-306, C.R.S. – No Change in Boundaries**

To Whom It May Concern:

Section 32-1-306, C.R.S., requires special districts to provide a current, accurate map of their boundaries to the Division of Local Government, County Clerk and Recorder and County Assessor by January 1 of each year. This letter is to inform you that the map that is currently on file with your office for the above-referenced District is the most current and accurate map. A copy of the current map is attached for your convenience.

Should you have any questions, please do not hesitate to contact me.

Sincerely,

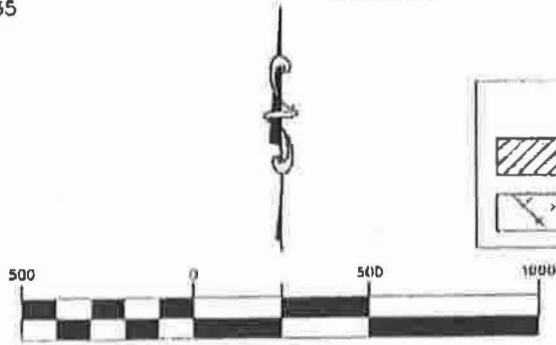
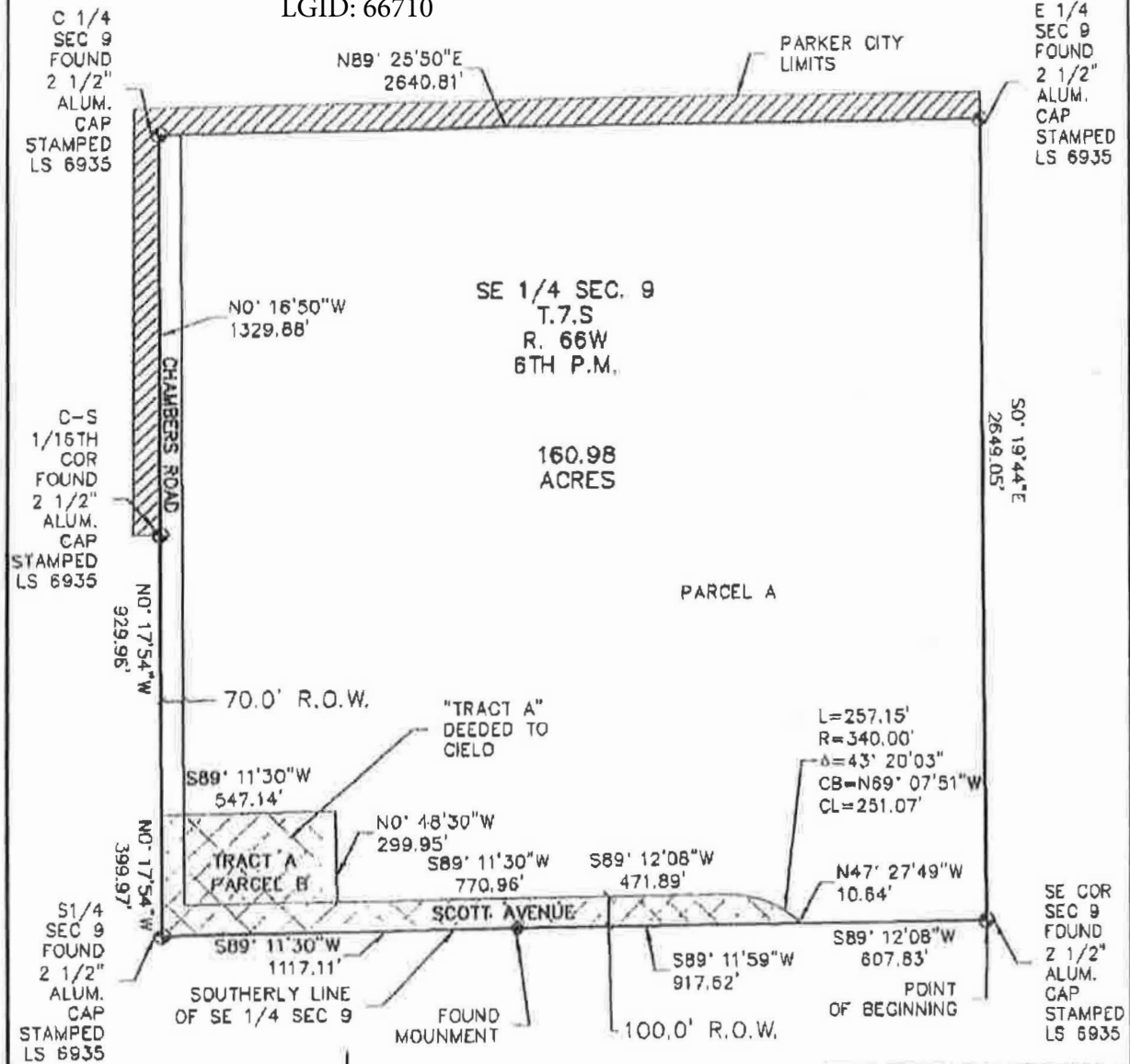
WHITE BEAR ANKELE TANAKA & WALDRON
Attorneys at Law

Jenna J. Slabaugh, Paralegal

Enclosure

CIELO METROPOLITAN DISTRICT

LGID: 66710



(IN FEET)
1 inch = 500 ft.

LEGEND	
	TOWN LIMITS
	TRACT A

PREVIOUS CONSULTING
SERVICES FOR THIS PROJECT
PROVIDED BY
PEAK CIVIL CONSULTANTS



ATWELL
www.atwell-group.com

JOB NO.: 14.54
DATE: 07/01/15

303.462.1100
CONTACT: JEFF FRENCH
JEFF@ATWELL-GROUP.COM