

ICENOGLER | SEAVER | POGUE

A Professional Corporation
Attorneys at Law

4725 South Monaco Street, Suite 225
Denver, Colorado 80237
Telephone: 303.292.9100
Facsimile: 303.292.9101

SHANNON F. SMITH
SSmith@ISP-law.com
Direct: 303.867.3012

November 10, 2014

Division of Local Government
1313 Sherman Street, Room 521
Denver, Colorado 80203

Douglas County Clerk and Recorder
301 Wilcox Street
Castle Rock, Colorado 80104

Douglas County Assessor
301 Wilcox Street
Castle Rock, Colorado 80104

Re: Lincoln Station Metropolitan District – January 1, 2015 Map Filing

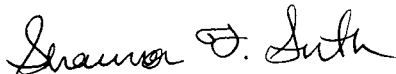
To Whom It May Concern:

Section 32-1-306, Colorado Revised Statutes, requires special districts to provide a current, accurate map of its boundaries to the Division, Assessor and Clerk and Recorder on or before January 1 of each year. This letter is being sent in satisfaction of the January 1, 2015 deadline and to inform you that the map, enclosed herewith is the most current and accurate map for the Lincoln Station Metropolitan District.

Should you have further questions or need additional information, please contact our office.

Very truly yours,

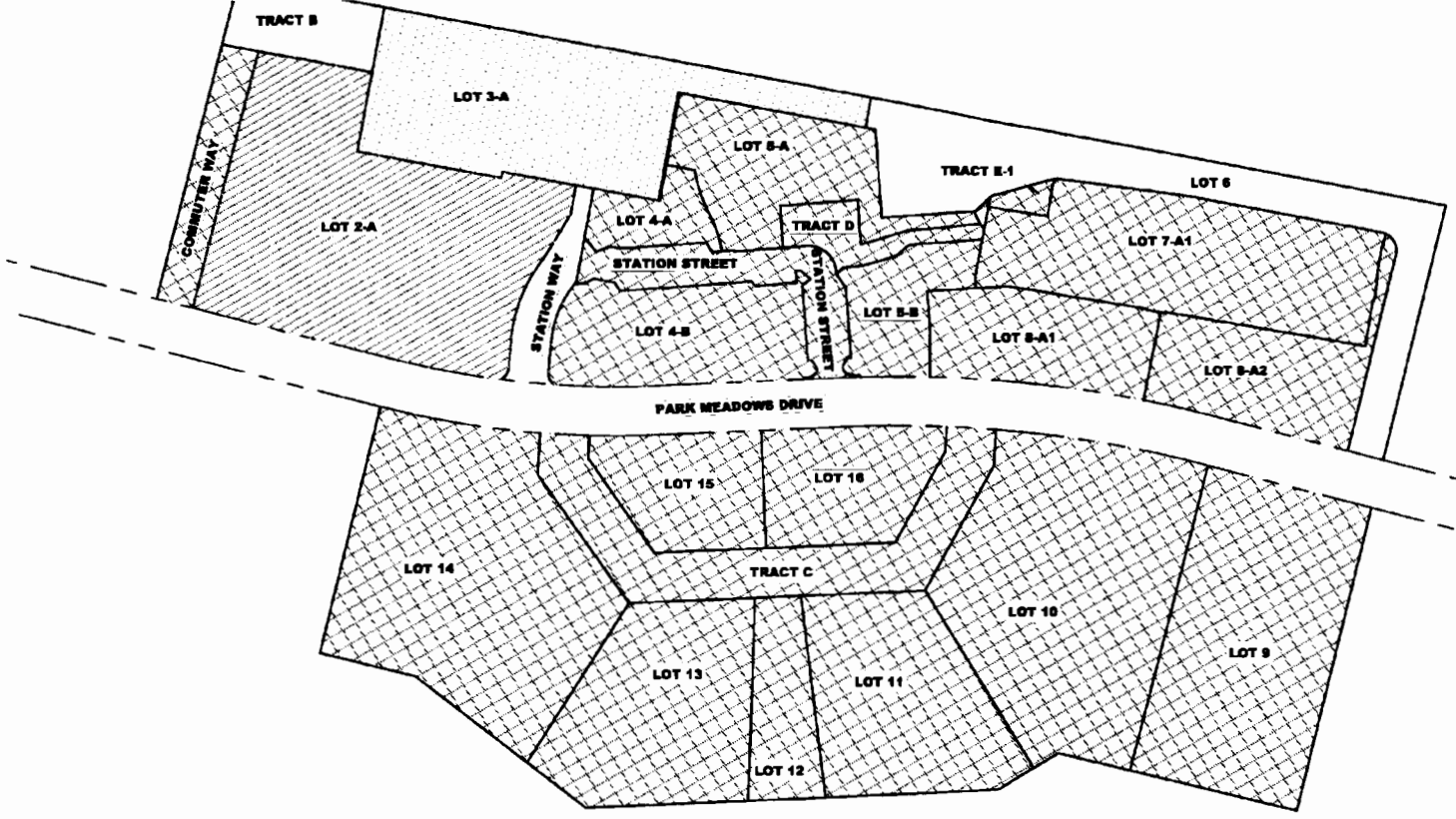
ICENOGLER | SEAVER | POGUE
A Professional Corporation



Shannon F. Smith

:/sfs
Enclosures

PATH: \\CALUSUR\B\Redline\End\LincolnStation\My Documents\X-District Area.dwg
 PLOTTED BY: EWL/lliston
 XREFS: 50app, 50base
 PLOT DATE: Feb 22, 2014 10:38am



Drawing Name X-District Area.dwg			
Job Number			
Prepared For	Design	Draft	Checked

" Calib e
 Calib Engineering, Inc.
 8201 Sandpark Lane, Suite 200
 Littleton, CO 80120 (303) 470-0134
 www.calibe-engineering.com
 Construction Management Civil Engineering Surveying

**BOUNDARY MAP FOR
 LINCOLN STATION METRO DISTRICT (444
 LINCOLN STATION METRO DEBT SERVICE DISTRI**