

## **STONE CREEK METROPOLITAN DISTRICT**

14901 E Hampden Ave. Suite 320  
Aurora, Colorado 80014  
Tel: 720-647-6541 or 855-289-6007

December 4, 2024

Division of Local Government  
1313 Sherman Street, Room 521  
Denver, Colorado 80203

[DLG E-Portal](#)

Douglas County Assessor  
301 Wilcox Street  
Castle Rock, CO 80104

[assessors@douglas.co.us](mailto:assessors@douglas.co.us)

Douglas County  
Clerk and Recorder  
301 Wilcox  
PO Box 1360  
Castle Rock 80104

[clerk@douglas.co.us](mailto:clerk@douglas.co.us)

Re: STONE CREEK METROPOLITAN DISTRICT

Ladies and Gentlemen:

In accordance with Section 32-1-306, C.R.S., as amended, this letter is to advise you that the boundaries of the above referenced District have not changed since the last filing of its boundary map. Attached is a current boundary map.

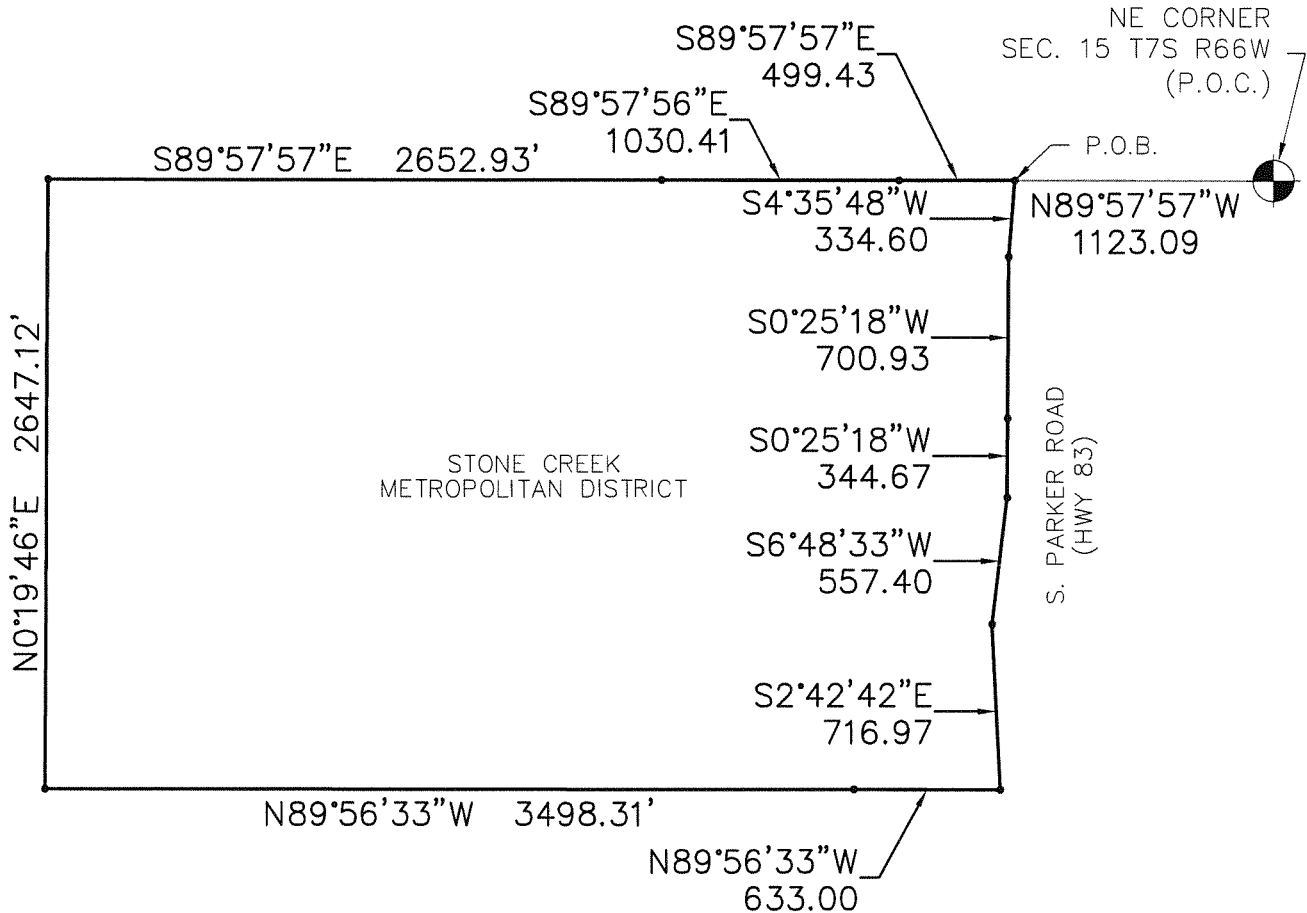
If you should find a discrepancy, or if I can be of further assistance, please contact me immediately.

Sincerely,

Shannon Torgerson  
District Manager

EXHIBIT B  
DISTRICT BOUNDARY EXHIBIT

A PARCEL OF LAND LOCATED IN THE NORTH HALF  
OF SECTION 15, TOWNSHIP 7 SOUTH, RANGE 66  
WEST OF THE SIXTH PRINCIPAL MERIDIAN, COUNTY  
OF DOUGLAS, STATE OF COLORADO



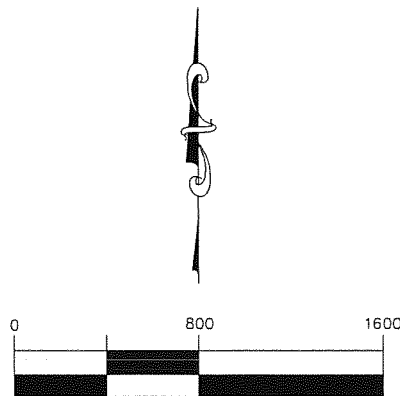
RECEIVED

JAN 15 2015

DIV OF LOCAL GOVERNMENT

DATE: 11/06/13

NOTE: THIS EXHIBIT DOES NOT  
REPRESENT A MONUMENTED LAND  
SURVEY. IT IS INTENDED ONLY TO  
DEPICT THE LEGAL DESCRIPTION  
ON EXHIBIT "A"



( IN FEET )  
1 inch = 800 ft.

**Peak**  
Civil Consultants

200 W. HAMPDEN AVE., SUITE 200  
ENGLEWOOD, COLORADO 80110  
PH: 720.855.3859  
FAX: 720.528.8167  
CONTACT: JEFF FRENCH

STONE CREEK METROPOLITAN DISTRICT

LEGAL DESCRIPTION:

A PARCEL OF LAND LOCATED IN THE NORTH HALF OF SECTION 15, TOWNSHIP 7 SOUTH, RANGE 66 WEST OF THE SIXTH PRINCIPAL MERIDIAN, COUNTY OF DOUGLAS, STATE OF COLORADO, MORE PARTICULARLY DESCRIBED AS FOLLOWS:

COMMENCING AT THE NORTH EAST CORNER OF SAID SECTION 15, N89°57'57"W A DISTANCE OF 1123.09 FEET TO THE POINT OF BEGINNING;

THENCE S04°35'48"W A DISTANCE OF 334.60 FEET;  
THENCE S00°25'18"W A DISTANCE OF 700.93 FEET;  
THENCE S00°25'18"W A DISTANCE OF 344.67 FEET;  
THENCE S06°48'33"W A DISTANCE OF 557.40 FEET;  
THENCE S02°42'42"E A DISTANCE OF 716.97 FEET;  
THENCE N89°56'33"W A DISTANCE OF 633.00 FEET;  
THENCE N89°56'33"W A DISTANCE OF 3498.31 FEET;  
THENCE N00°19'46"E A DISTANCE OF 2647.12 FEET;  
THENCE S89°57'57"E A DISTANCE OF 2652.93 FEET;  
THENCE S89°57'56"E A DISTANCE OF 1030.41 FEET;  
THENCE S89°57'57"E A DISTANCE OF 499.43 FEET TO THE POINT OF BEGINNING;

CONTAINING 10,962,075.38 SQ. FT. OR 251.655 ACRES, MORE OR LESS.

**RECEIVED**

JAN 15 2015

DIV OF LOCAL GOVERNMENT



L. KELLEY STEVENSON

DATE

COLORADO P.L.S. NO. 38231  
FOR AND ON BEHALF OF PEAK CIVIL CONSULTANTS, INC  
200 W. HAMPDEN AVENUE, SUITE 200  
ENGLEWOOD, CO 80110

DATE: 11/06/13

**Peak**  
Civil Consultants

200 W. HAMPDEN AVE., SUITE 200  
ENGLEWOOD, COLORADO 80110  
PH. 720 855 3859  
FAX. 720 528 8167  
CONTACT: JEFF FRENCH

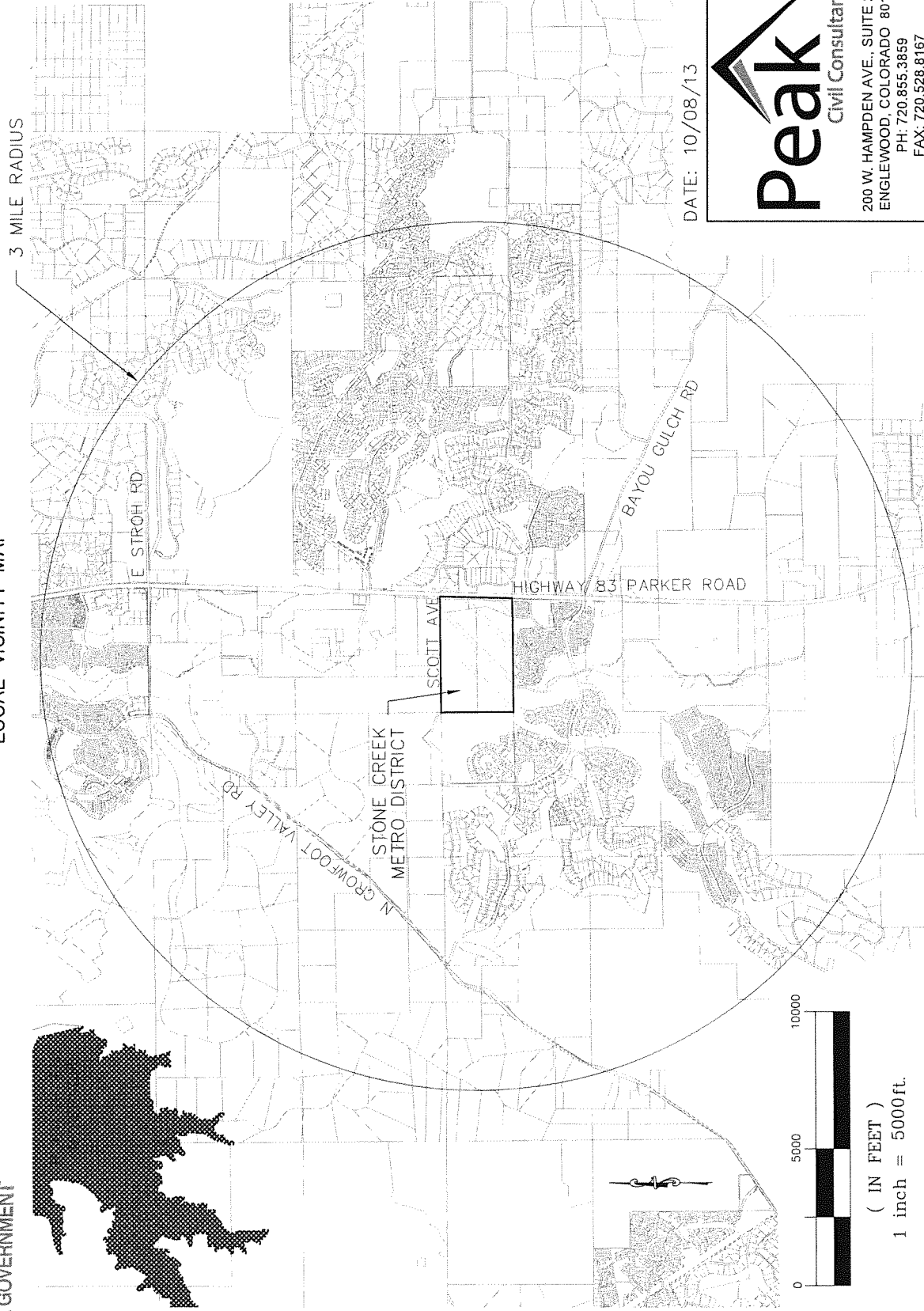
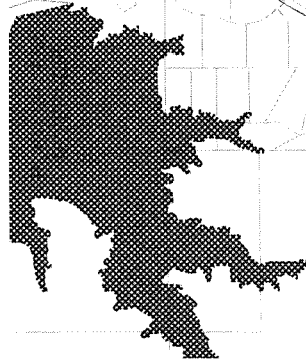
RECEIVED

JAN 15 2015

Stone Creek Metropolitan District

DIV OF LOCAL GOVERNMENT

EXHIBIT C1  
LOCAL VICINITY MAP



DATE: 10/08/13

**Peak**  
Civil Consultants

200 W. HAMPDEN AVE., SUITE 200  
ENGLEWOOD, COLORADO 80110  
PH: 720.855.3859  
FAX: 720.528.8167  
CONTACT: JEFF FRENCH