

STERLING RANCH



COMMUNITY AUTHORITY BOARD

December 5, 2022

Division of Local Government
1313 Sherman Street, Room 521
Denver, CO 80203
Via E-Filing Portal

Office of the Douglas County Assessor
301 Wilcox Street
Castle Rock, CO 80104
assessors@douglas.co.us

Office of the Douglas County Clerk & Recorder
301 Wilcox Street, 1st Floor
Castle Rock, CO 80104
recording@douglas.co.us

Re: Sterling Ranch Colorado Metropolitan District No. 7 – 2022 Map Filing: Boundary Changes

Dear Filing Administrator:

Colorado Revised Statute §32-1-306 requires special districts to provide a current, and accurate map of its boundaries to the Division of Local Government, County Assessor and Clerk and Recorder on or before January 1, of each year. In 2022 the District above did change its boundaries.

Please replace the current map on file with the attached map. Should you have further questions or need additional information, please contact the undersigned.

Sincerely,

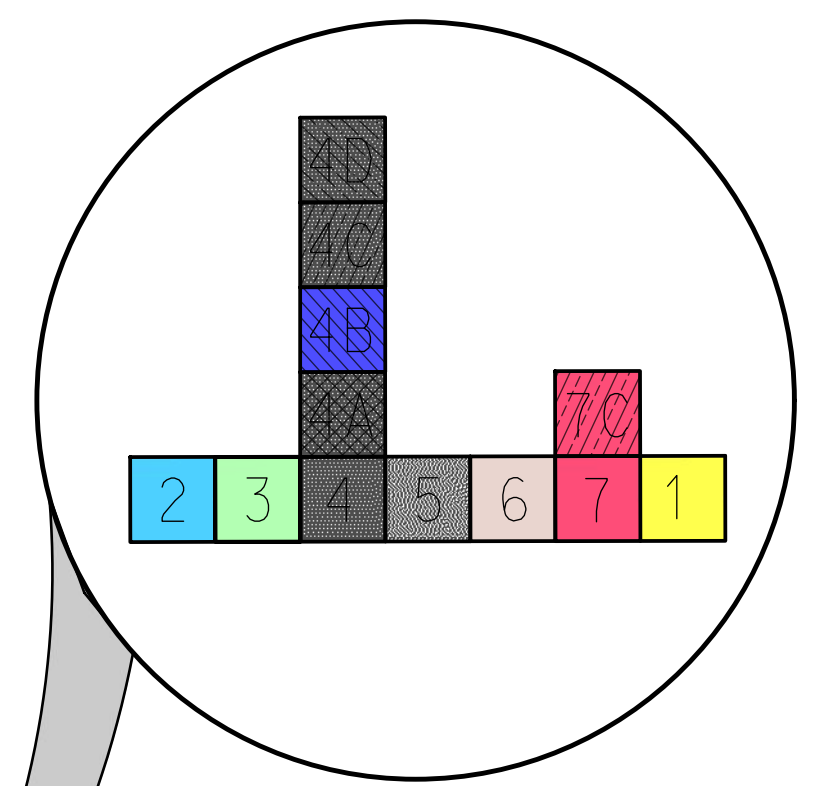
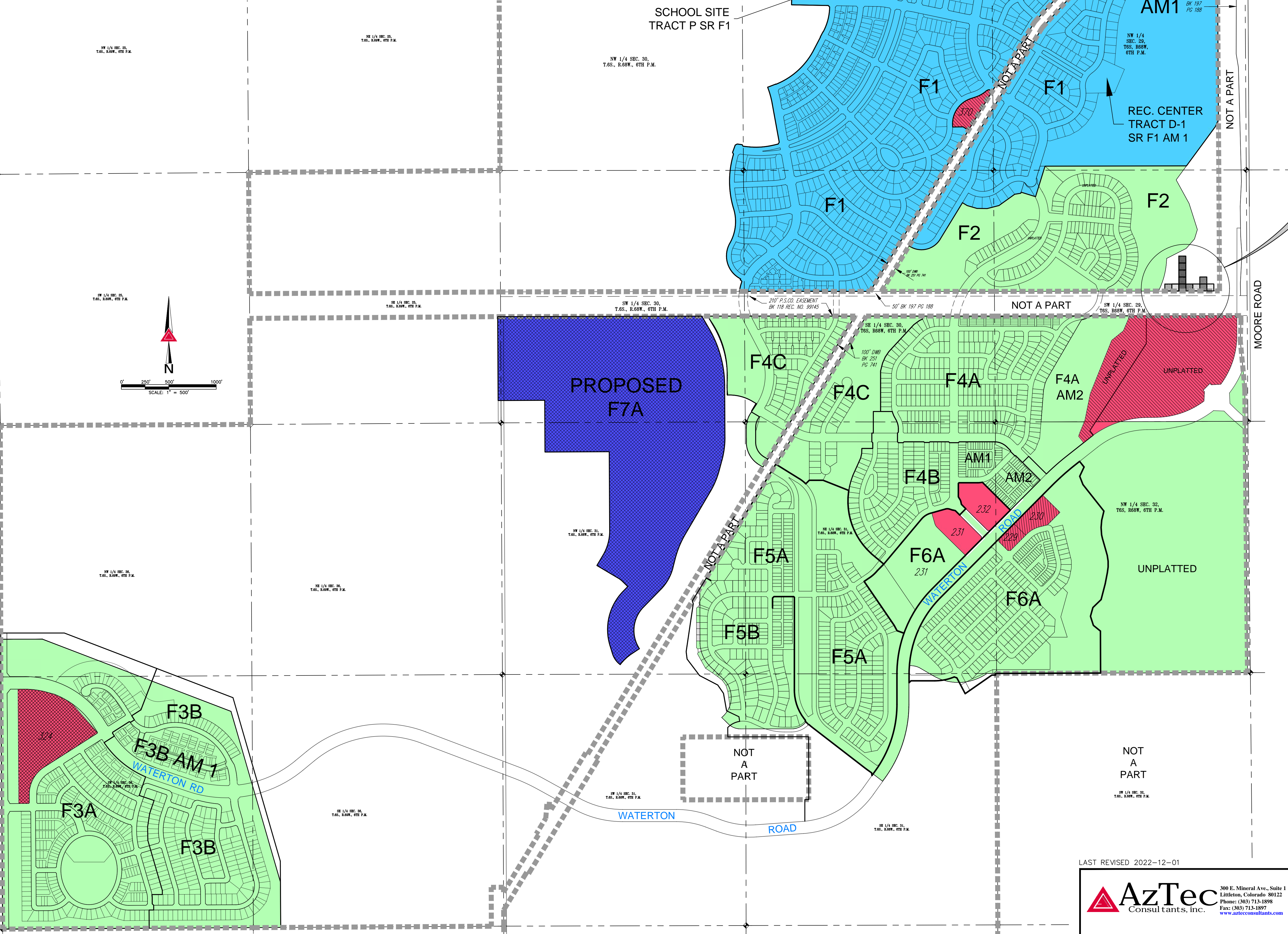
A handwritten signature in blue ink, appearing to read 'C. Richards'.

Cameron J. Richards, Esq.
General Counsel
Sterling Ranch CAB

STERLING RANCH COLORADO DISTRICT MAP

DISTRICTS 1-7

COUNTY OF DOUGLAS, STATE OF COLORADO.



DISTRICT LEGEND

- STERLING RANCH COLORADO METROPOLITAN DISTRICT NO. 1
- 319.593 AC STERLING RANCH COLORADO METROPOLITAN DISTRICT NO. 2
- STERLING RANCH COLORADO METROPOLITAN DISTRICT NO. 3
- STERLING RANCH COLORADO METROPOLITAN DISTRICT NO. 4
- STERLING RANCH COLORADO METROPOLITAN DISTRICT NO. 4 SUB-DISTRICT-A
- STERLING RANCH COLORADO METROPOLITAN DISTRICT NO. 4 SUB-DISTRICT-B
- STERLING RANCH COLORADO METROPOLITAN DISTRICT NO. 4 SUB-DISTRICT-C
- STERLING RANCH COLORADO METROPOLITAN DISTRICT NO. 4 SUB-DISTRICT-D
- STERLING RANCH COLORADO METROPOLITAN DISTRICT NO. 5
- STERLING RANCH COLORADO METROPOLITAN DISTRICT NO. 6
- STERLING RANCH COLORADO METROPOLITAN DISTRICT NO. 7
- STERLING RANCH COLORADO METROPOLITAN DISTRICT NO. 7 SUB-DISTRICT-A
- STERLING RANCH COLORADO METROPOLITAN DISTRICT NO. 7 SUB-DISTRICT-B
- STERLING RANCH COLORADO METROPOLITAN DISTRICT NO. 7 SUB-DISTRICT-C

DRAWING LEGEND

- STERLING RANCH PROPERTY
- F1** REPRESENTS PLAT NO.

LAST REVISED 2022-12-01

AzTec Consultants, Inc.	300 E. Mineral Ave., Suite 1 Littleton, Colorado 80122 Phone: (303) 713-1898 Fax: (303) 713-1897 www.aztecconsultants.com	DATE OF PREPARATION:	2015-05-13
		SCALE:	1" = 300'
Drawn By: CWB AzTec Proj. No.: 54615-29		DEVELOPER STERLING RANCH DEVELOPMENT COMPANY 1805 SHEA CENTER DRIVE, SUITE 210 HIGHLANDS RANCH, CO 80129 303.222.6800	
		SHEET 1 OF 1	