



December 27, 2024

Division of Local Government  
1313 Sherman Street, Room 521  
Denver, CO 80203  
Via E-Filing Portal

Office of the Douglas County Assessor  
301 Wilcox Street  
Castle Rock, CO 80104  
assessors@douglas.co.us

Office of the Douglas County Clerk & Recorder  
301 Wilcox Street, 1st Floor  
Castle Rock, CO 80104  
clerk@douglas.co.us

Re: Sterling Ranch Colorado Metropolitan District No. 5 – 2024 Map Filing: No Boundary Changes

Dear Filing Administrator:

Colorado Revised Statute § 32-1-306 requires special districts to provide a current, and accurate map of its boundaries to the Division of Local Government, County Assessor and Clerk and Recorder on or before January 1, of each year. In 2024 the District above had no boundary adjustments, inclusions, or exclusions.

Please use the enclosed map for any boundary questions. Should you have further questions or need additional information, please contact the undersigned.

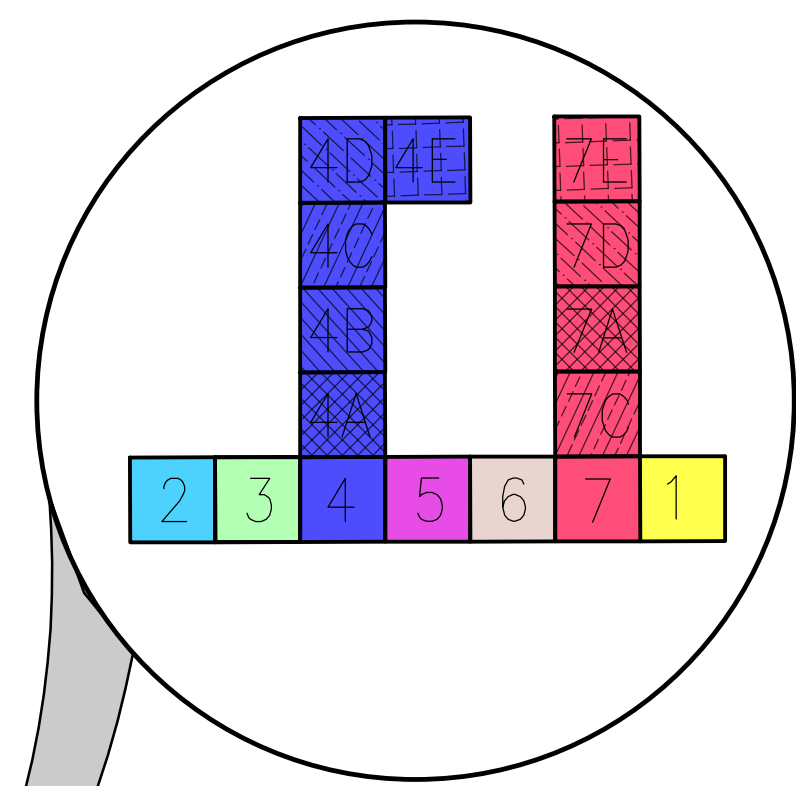
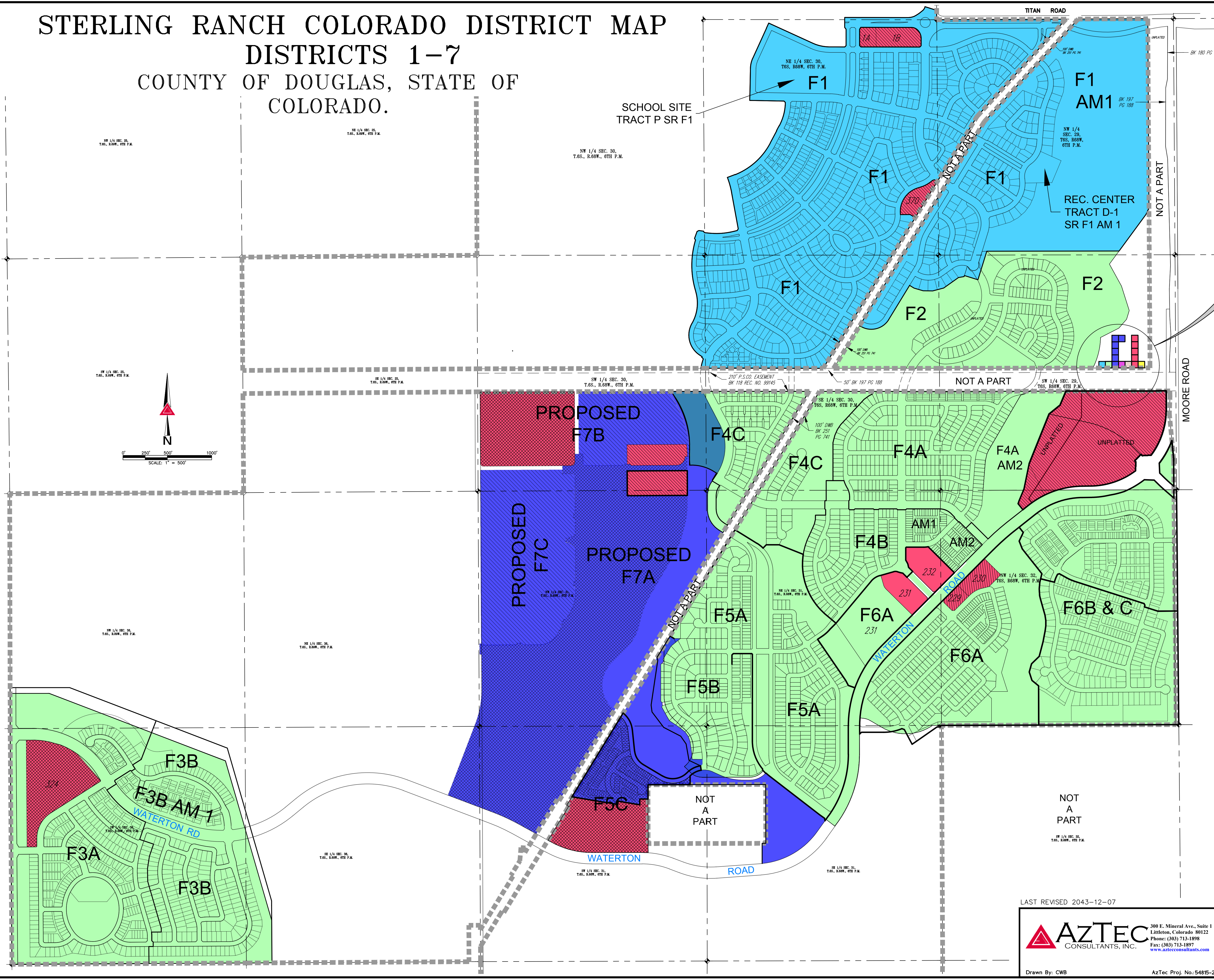
Sincerely,

A handwritten signature in blue ink, appearing to read "CJ Richards".

**Cameron J. Richards, Esq.**  
General Counsel  
Sterling Ranch CAB  
Cameron.Richards@sterlingranchcab.com  
(303) 902-5719



STERLING RANCH COLORADO DISTRICT MAP  
DISTRICTS 1-7  
COUNTY OF DOUGLAS, STATE OF  
COLORADO.



DIRECTOR'S  
PARCELS  
DETAIL  
NOT TO SCALE

DISTRICT  
LEGEND

- STERLING RANCH COLORADO METROPOLITAN DISTRICT NO. 1
- STERLING RANCH COLORADO METROPOLITAN DISTRICT NO. 2
- STERLING RANCH COLORADO METROPOLITAN DISTRICT NO. 3
- STERLING RANCH COLORADO METROPOLITAN DISTRICT NO. 4
- STERLING RANCH COLORADO METROPOLITAN DISTRICT NO. 4 SUB-DISTRICT-A
- STERLING RANCH COLORADO METROPOLITAN DISTRICT NO. 4 SUB-DISTRICT-B
- STERLING RANCH COLORADO METROPOLITAN DISTRICT NO. 4 SUB-DISTRICT-C
- STERLING RANCH COLORADO METROPOLITAN DISTRICT NO. 4 SUB-DISTRICT-D
- STERLING RANCH COLORADO METROPOLITAN DISTRICT NO. 5
- STERLING RANCH COLORADO METROPOLITAN DISTRICT NO. 6
- STERLING RANCH COLORADO METROPOLITAN DISTRICT NO. 7
- STERLING RANCH COLORADO METROPOLITAN DISTRICT NO. 7 SUB-DISTRICT-A
- STERLING RANCH COLORADO METROPOLITAN DISTRICT NO. 7 SUB-DISTRICT-B
- STERLING RANCH COLORADO METROPOLITAN DISTRICT NO. 7 SUB-DISTRICT-C

DRAWING  
LEGEND

STERLING RANCH PROPERTY

F1 REPRESENTS PLAT NO.

LAST REVISED 2043-12-07

 300 E. Mineral Ave., Suite 1 Littleton, Colorado 80122 Phone: (303) 713-1898 Fax: (303) 713-1897 www.aztecconsultants.com	DEVELOPER STERLING RANCH DEVELOPMENT COMPANY		DATE OF PREPARATION:	2015-05-13
	1805 SHEA CENTER DRIVE, SUITE 210 HIGHLANDS RANCH, CO 80129 303.222.6800		SCALE:	1" = 300'
	Drawn By: CWB AzTec Proj. No: 54815-29		SHEET 1 OF 1	