



December 27, 2024

Division of Local Government
1313 Sherman Street, Room 521
Denver, CO 80203
Via E-Filing Portal

Office of the Douglas County Assessor
301 Wilcox Street
Castle Rock, CO 80104
assessors@douglas.co.us

Office of the Douglas County Clerk & Recorder
301 Wilcox Street, 1st Floor
Castle Rock, CO 80104
clerk@douglas.co.us

Re: Sterling Ranch Colorado Metropolitan District No. 4 Subdistrict-C – 2024 Map Filing: No Boundary Changes

Dear Filing Administrator:

Colorado Revised Statute § 32-1-306 requires special districts to provide a current, and accurate map of its boundaries to the Division of Local Government, County Assessor and Clerk and Recorder on or before January 1, of each year. In 2024 the District above had no boundary adjustments, inclusions, or exclusions.

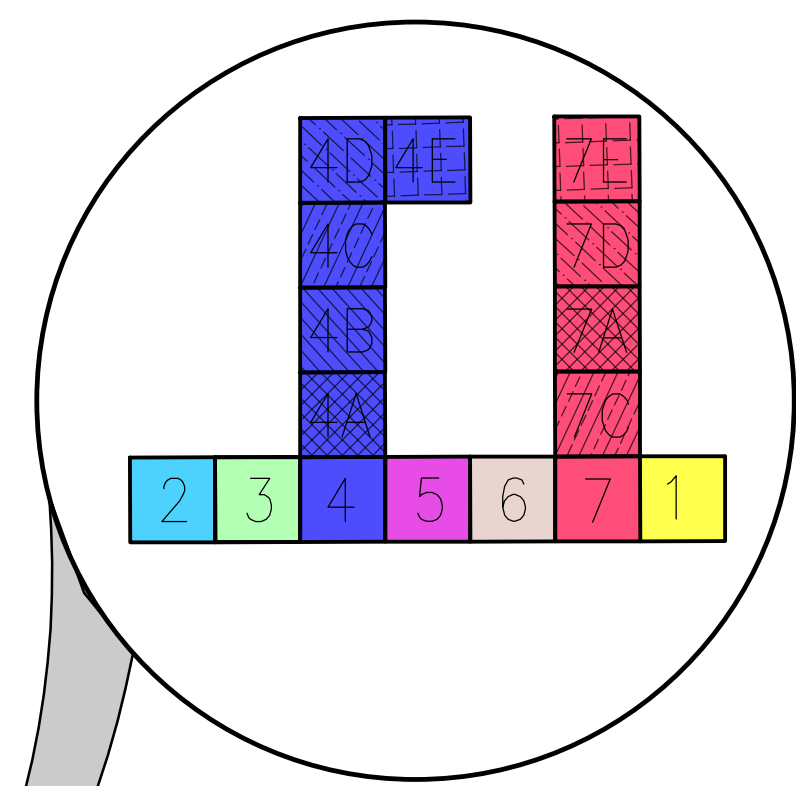
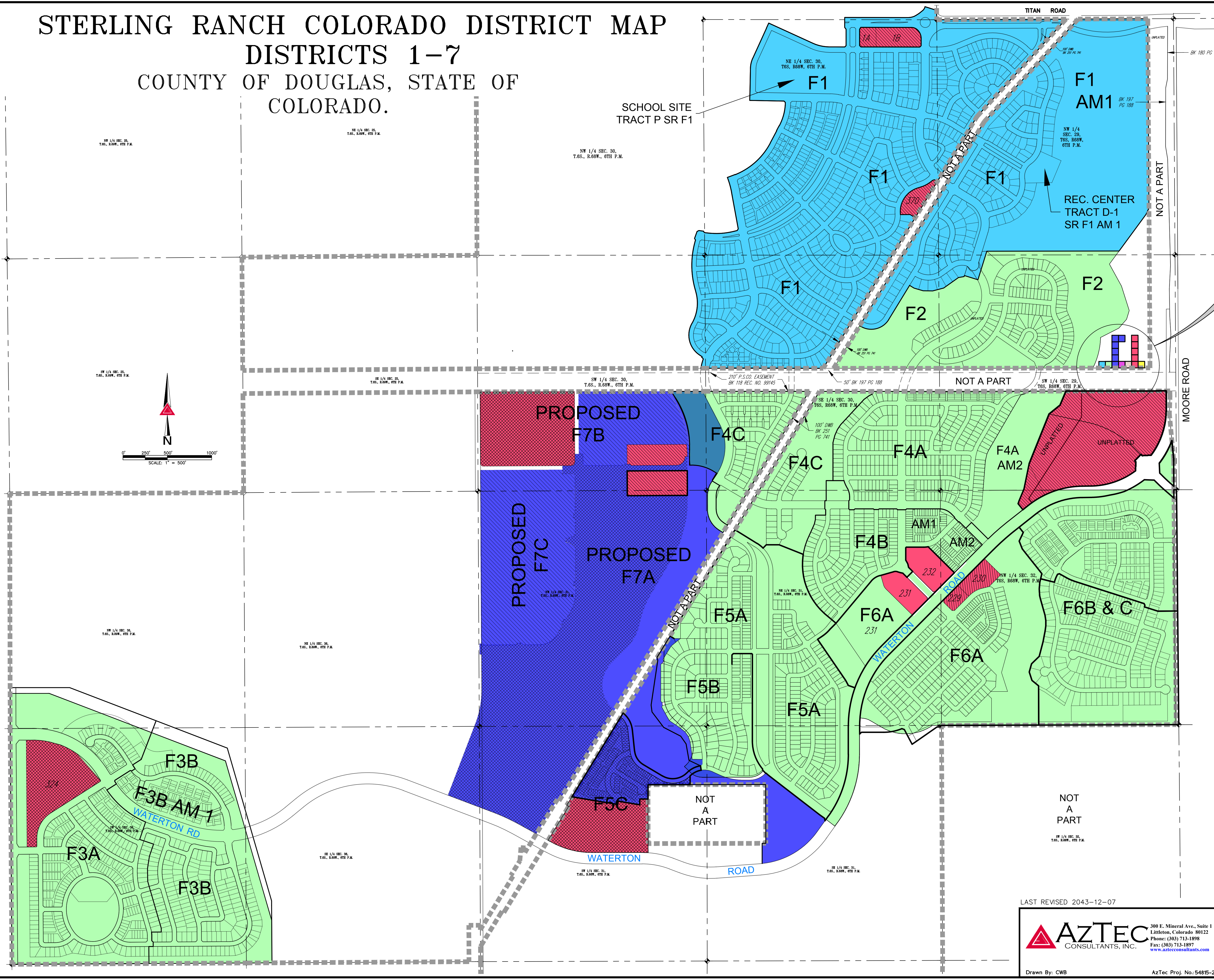
Please use the enclosed map for any boundary questions. Should you have further questions or need additional information, please contact the undersigned.

Sincerely,

A handwritten signature in blue ink, appearing to read "CJ Richards".

Cameron J. Richards, Esq.
General Counsel
Sterling Ranch CAB
Cameron.Richards@sterlingranchcab.com
(303) 902-5719

STERLING RANCH COLORADO DISTRICT MAP
DISTRICTS 1-7
COUNTY OF DOUGLAS, STATE OF
COLORADO.



DIRECTOR'S
PARCELS
DETAIL
NOT TO SCALE

DISTRICT
LEGEND

- STERLING RANCH COLORADO METROPOLITAN DISTRICT NO. 1
- STERLING RANCH COLORADO METROPOLITAN DISTRICT NO. 2
- STERLING RANCH COLORADO METROPOLITAN DISTRICT NO. 3
- STERLING RANCH COLORADO METROPOLITAN DISTRICT NO. 4
- STERLING RANCH COLORADO METROPOLITAN DISTRICT NO. 4 SUB-DISTRICT-A
- STERLING RANCH COLORADO METROPOLITAN DISTRICT NO. 4 SUB-DISTRICT-B
- STERLING RANCH COLORADO METROPOLITAN DISTRICT NO. 4 SUB-DISTRICT-C
- STERLING RANCH COLORADO METROPOLITAN DISTRICT NO. 4 SUB-DISTRICT-D
- STERLING RANCH COLORADO METROPOLITAN DISTRICT NO. 5
- STERLING RANCH COLORADO METROPOLITAN DISTRICT NO. 6
- STERLING RANCH COLORADO METROPOLITAN DISTRICT NO. 7
- STERLING RANCH COLORADO METROPOLITAN DISTRICT NO. 7 SUB-DISTRICT-A
- STERLING RANCH COLORADO METROPOLITAN DISTRICT NO. 7 SUB-DISTRICT-B
- STERLING RANCH COLORADO METROPOLITAN DISTRICT NO. 7 SUB-DISTRICT-C

DRAWING
LEGEND

STERLING RANCH PROPERTY

F1 REPRESENTS PLAT NO.

LAST REVISED 2043-12-07

AZTEC
CONSULTANTS, INC.
300 E. Mineral Ave., Suite 1
Littleton, Colorado 80122
Phone: (303) 713-1898
Fax: (303) 713-1897
www.aztecconsultants.com
Drawn By: CWB
AzTec Proj. No: 54815-29

DEVELOPER
STERLING RANCH
DEVELOPMENT COMPANY
1805 SHEA CENTER DRIVE, SUITE 210
HIGHLANDS RANCH, CO 80129
303.222.6800

DATE OF PREPARATION:	2015-05-13
SCALE:	1" = 300'
SHEET 1 OF 1	