

SOUTH SANTA FE METROPOLITAN DISTRICT NO. 2
8390 EAST CRESCENT PARKWAY, SUITE 500
GREENWOOD VILLAGE, CO 80111
(303) 779-4525 (303) 773-2050 (FAX)

April 16, 2013

Division of Local Government
1313 Sherman Street, Suite 521
Denver, CO 80203

via e-filing portal

Douglas County Assessor's Office
301 Wilcox Street
Castle Rock, CO 80104

via email: assessors@douglas.co.us

Douglas County Clerk and Recorder
301 Wilcox Street
Castle Rock, CO 80104

via email: jarrowsm@douglas.co.us

Re: South Santa Fe Metropolitan District No. 2

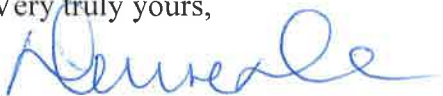
Ladies and Gentlemen:

On December 15, 2011, the above-referenced District declared Inactive Status pursuant to Section 32-1-104(3)(a), C.R.S. and on March 18, 2013, the above-referenced District gave Notice of Return to Active Status and is now completing the statutory compliance items necessary to complete the process of returning to active status.

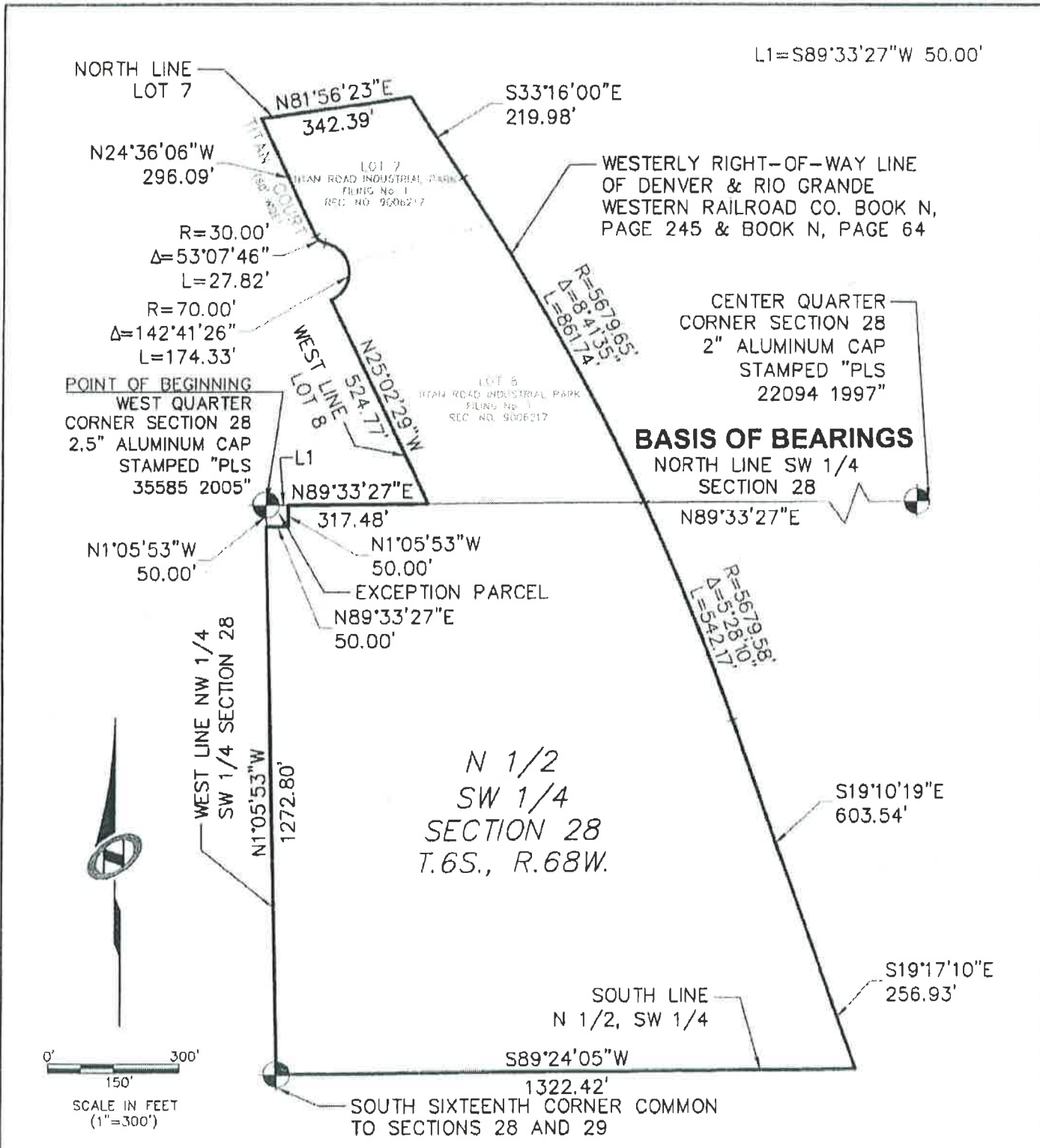
As such, and in accordance with Section 32-1-306, C.R.S., please find enclosed a current map of the above-referenced District's boundaries.

Should you have any questions or comments, please do not hesitate to contact me.

Very truly yours,



Denise Denslow
District Manager



PARCEL CONTAINS 1,862,739 SQUARE FEET OR 42.763 ACRES, MORE OR LESS.

<p>8000 S. Chester Street, Suite 200 Centennial, CO 80112 303.220.6400 TEL 303.220.9001 FAX WWW.NV5.COM</p>	<p>EXHIBIT FOR LEGAL DESCRIPTION SOUTH SANTA FE COMMERCIAL CENTER PARCEL A</p>	<p>PAGE NUMBER 4</p>
	<p>Date submitted: 03/06/2013</p>	<p>OF 4 PAGES JOB NUMBER DVB0207</p>