



Rose A. Vallesio  
Paralegal

303-858-1800  
rvallesio@wbapc.com

December 6, 2024

**VIA ELECTRONIC SUBMISSION  
AND ELECTRONIC MAIL**

Division of Local Government

Douglas County Clerk & Recorder  
[clerk@douglas.co.us](mailto:clerk@douglas.co.us)

Douglas County Assessor  
[assessors@douglas.co.us](mailto:assessors@douglas.co.us)

**Re: Maher Ranch Metropolitan District No. 4 (LGID#:18092)  
Map Filing Pursuant to §32-1-306, C.R.S. – No Change in Boundaries**

To Whom It May Concern:

Section 32-1-306, C.R.S., requires special districts to provide a current, accurate map of their boundaries to the Division of Local Government, County Clerk and Recorder and County Assessor by January 1 of each year. This letter is to inform you that the map that is currently on file with your office for the above-referenced District is the most current and accurate map. A copy of the current map is attached for your convenience.

Should you have any questions, please do not hesitate to contact me.

Sincerely,

WHITE BEAR ANKELE TANAKA & WALDRON  
Attorneys at Law

Rose A. Vallesio  
Paralegal

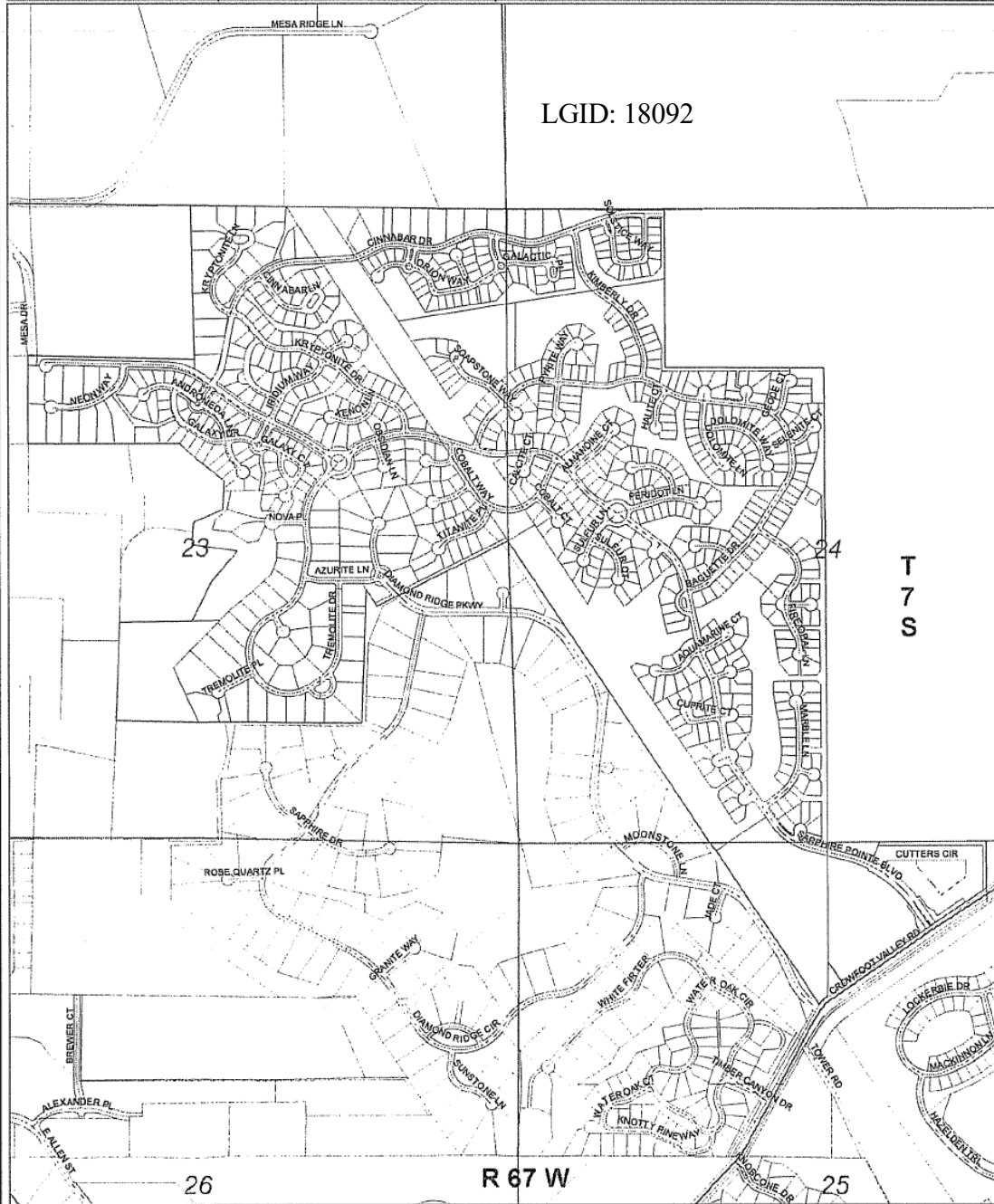
Attachment

## Boundary Map

MaheR Ranch Metropolitan District #4 Authority # 4250


**DOUGLAS COUNTY**  
MISSOURI

LGID: 18092



I, Blair Dickhoner, as representative of Maier Ranch MD No. 4 District, do hereby certify

this map to be an accurate representation of the district's boundary as shown. Signed this 21<sup>st</sup> day of December, 2009.

Signature \_\_\_\_\_

Signature

Attorney  
Title

Title

Email bdickhoner@wbape.com

Email

Phone (303) 858-1800

Phone \_\_\_\_\_

**DISCLAIMER**

All ideas and information ("Products") contained herein are for informational purposes only. Although such Products are believed to be accurate at the time provided, Douglas County does not warrant that such Products are correct. Douglas County provides these Products on an "as is" basis and makes no representation or warranty, expressed or implied, including, but not limited to, accuracy or reliability or implied warranties of merchantability or fitness for a particular purpose. Douglas County shall not be liable for any direct, indirect, incidental, or consequential damages arising out of use of such Products, or the inability to use such Products or out of any breach of any warranty. The user acknowledges and agrees that the use of such Products is at the user's sole risk and responsibility.

*Several products described by us are other Douglas County Q&A products, including online versions. Comments and/or updates should be directed to the Douglas County Q&A Division at Q&A@dcf.wa.gov*

### Legend

**MaheR Ranch Metropolitan District #4**

## Parcels

#### Sections

☐ Townships

Major Roads

