



Jenna J. Slabaugh  
Paralegal

303-858-1800  
jslabaugh@wbapc.com

December 26, 2022

**VIA ELECTRONIC SUBMISSION  
AND ELECTRONIC MAIL**

Division of Local Government  
*E-filed via [www.dola.colorado.gov/e-filing](http://www.dola.colorado.gov/e-filing)*

Douglas County Clerk and Recorder  
301 Wilcox Street  
Castle Rock, CO 80104  
[recording@douglas.co.us](mailto:recording@douglas.co.us)

Douglas County Assessor  
301 Wilcox Street  
Castle Rock, CO 80104  
[assessors@douglas.co.us](mailto:assessors@douglas.co.us)

**Re: Lanterns Metropolitan District No. 2 (LGID#:66540)  
Map Filing Pursuant to §32-1-306, C.R.S. – No Change in Boundaries**

To Whom It May Concern:

Section 32-1-306, C.R.S., requires special districts to provide a current, accurate map of their boundaries to the Division of Local Government, County Clerk and Recorder and County Assessor by January 1 of each year. This letter is to inform you that the map that is currently on file with your office for the above-referenced District is the most current and accurate map. A copy of the current map is attached for your convenience.

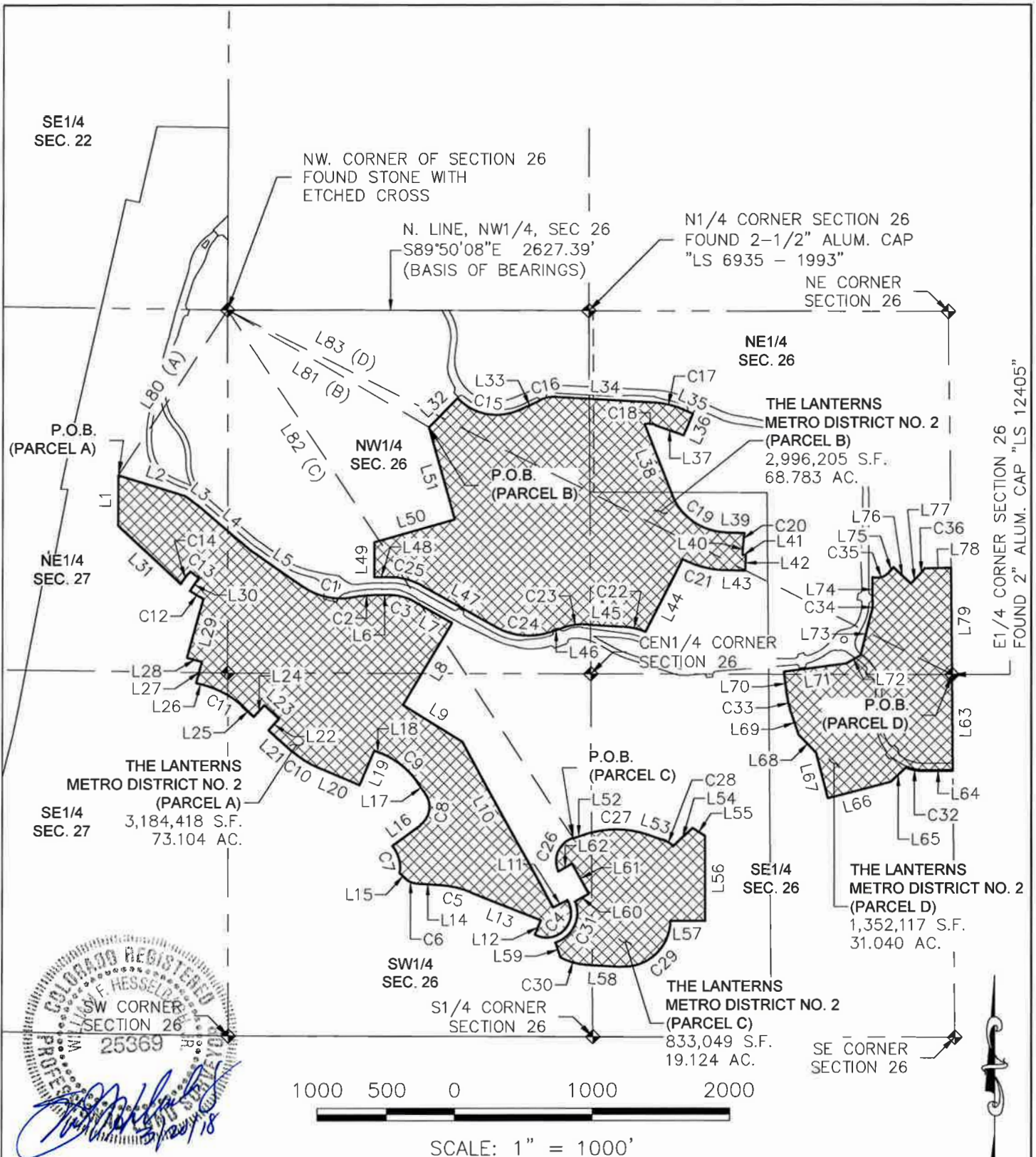
Should you have any questions, please do not hesitate to contact me.

Sincerely,

WHITE BEAR ANKELE TANAKA & WALDRON  
Attorneys at Law

Jenna J. Slabaugh, Paralegal

Enclosure  
1604.0024: 1271792



METROPOLITAN DISTRICT NO. 2 CONTAINS 8,365,789 SQUARE FEET OR (192.051 ACRES) MORE OR LESS.  
This illustration does not represent a monumented survey. It is intended only to depict the attached legal description.

THE LANTERNS  
METROPOLITAN DISTRICT NO. 2

BOUNDARY EXHIBIT



10333 E. Dry Creek Rd.  
Suite 240  
Englewood, CO 80111  
Tel: (720) 482-9526  
Fax: (720) 482-9546