

Castle Pines Commercial Metropolitan District No. 1
8390 E. Crescent Parkway, Suite 300
Greenwood Village, Colorado 80111
Office: 303.779.5710 Fax: 303.779.0348

December 21, 2021

Division of Local Government
1313 Sherman Street, Room 521
Denver, CO 80203
[Via E-File Portal](#)

Office of the Douglas County Assessor
301 Wilcox Street
Castle Rock, CO 80104
assessors@douglas.co.us

Office of the County Clerk & Recorder
301 Wilcox Street, 1st Floor
Castle Rock, CO 80104
recording@douglas.co.us

Re: Castle Pines Commercial Metropolitan District No. 1 – Map Filing

Dear Filing Administrator:

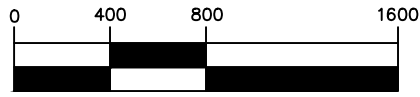
Colorado Revised Statute §32-1-306 requires special districts to provide a current, and accurate map of its boundaries to the Division of Local Government, County Assessor and Clerk and Recorder on or before January 1, of each year. In 2021, the District above has had boundary adjustments, inclusions, or exclusions. An updated map is attached.

Please use the attached current map for any boundary questions. Should you have further questions or need additional information, please contact the undersigned via email or by telephone at (303) 779-5710.

Sincerely,

Rachel Alles

Rachel Alles
District Administrator



1 inch = 800 ft.

SW 1/4 SEC. 22,
T.7S., R.67W., 6TH P.M.

SE 1/4 SEC. 22,
T.7S., R.67W., 6TH P.M.

CASTLEGATE DR. NORTH

DISTRICT 1

DISTRICT 4

NW CORNER
SECTION 27

CASTLEGATE DR. WEST

N 1/4 CORNER
SECTION 27

I-225

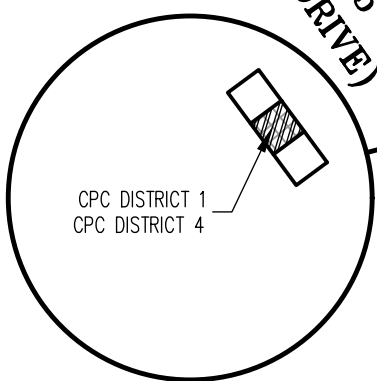
NE CORNER
SECTION 27

US HWY. 85
(SANTA FE DRIVE)

DISTRICT 4

DISTRICT 1

SECTION 27
T.7S., R.67W.,
6TH P.M.



CPC DISTRICT 1
CPC DISTRICT 4

SANTA FE DR.

DISTRICT 1

DISTRICT 1

FAC SHOPS

DISTRICT 4

BLVD.

MEADOWS PKWY.

LEGEND

 CASTLE PINES COMMERCIAL METROPOLITAN DISTRICT 1

 CASTLE PINES COMMERCIAL METROPOLITAN DISTRICT 4



300 East Mineral Ave,
Suite 1
Littleton, Colorado 80122
Phone: (303)713-1898
Fax: (303)713-1897
www.aztecconsultants.com

DISTRICT MAP
CASTLE PINES COMMERCIAL METRO. DISTRICTS 1 & 4
TOWN OF CASTLE ROCK, COLORADO