



Dominion Water & Sanitation District
9250 E. Costilla Avenue, Suite 210
Greenwood Village, CO 80112
(720) 531-4210/ info@dominionwsd.com

December 1, 2021

Division of Local Government
1313 Sherman Street, Room 521
Denver, CO 80203
[Via E-Filing Portal](#)

Office of the Douglas County Assessor
301 Wilcox Street
Castle Rock, CO 80104
assessors@douglas.co.us

Office of the Douglas County Clerk
& Recorder
301 Wilcox Street, 1st Floor
Castle Rock, CO 80104
recording@douglas.co.us

Re: Dominion Water & Sanitation District – 2021 Map Filing

Dear Sir/ Madame:

Colorado Revised Statute §32-1-306 requires special districts to provide a current, and accurate map of its boundaries to the Division of Local Government, County Assessor and Clerk and Recorder on or before January 1, of each year. This letter is to advise you that the boundaries of the above-referenced District have not changed since the last filing of its boundary map.

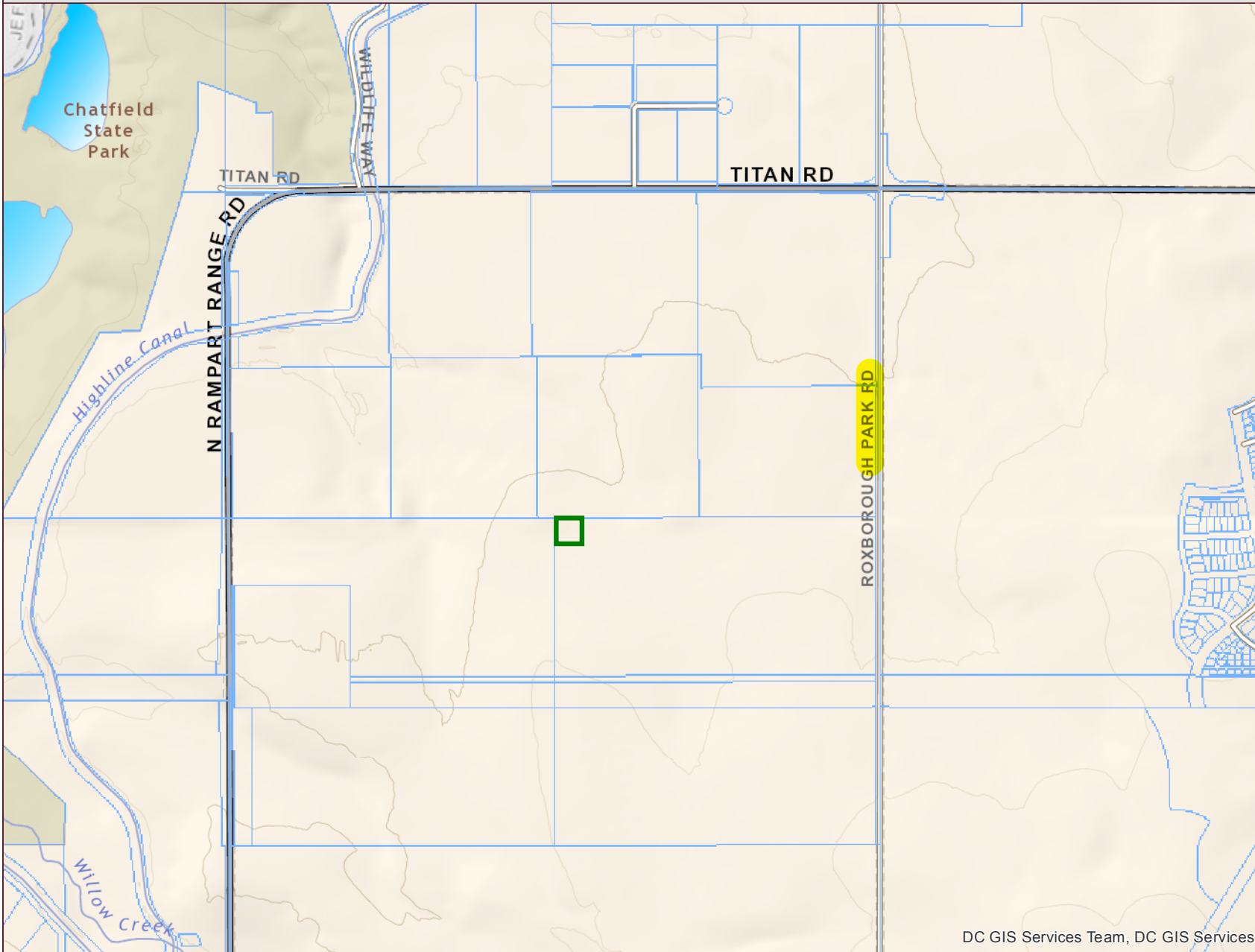
Should you have further questions or need additional information, please contact the undersigned via email at trina.hartman@dominionwsd.com or by telephone at (720) 531-4210.

Sincerely,

A handwritten signature in blue ink that reads 'Trina Hartman'.

Trina Hartman
District Administrator

Dominion Water & Sanitation District



Real Property


 Parcel

Public Land Survey System

 Township

 Section

General Features

 School

 Private Road

 Railroad

DC GIS Services Team, DC GIS Services

DISCLAIMER:

All data and information ("Products") contained herein are for informational purposes only. Although such Products are believed to be accurate at the time of printing, Douglas County does not warrant that such Products are error free. Douglas County provides these Products on an "as is" basis without warranties of any kind, either express or implied, including, but not limited to, warranties of title or implied warranties of merchantability or fitness for a particular purpose. Douglas County shall not be liable for any direct, indirect, incidental, special or consequential damages arising out of the use of such Products, or the inability to use such Products or out of any breach of any warranty. The user acknowledges and agrees that the use of such Products is at the sole risk of the user. General questions about this or any other Douglas County GIS products, including errors, omissions, corrections and/or updates should be directed to the Douglas County GIS Division at (303) 660-7416.

Douglas County GIS Division
Philip S. Miller Bldg., 100 Third St.
Castle Rock, Colorado 80104

