



Kristine N. Stone
Paralegal

303-858-1800
kstone@wbapc.com

December 12, 2023

**VIA ELECTRONIC SUBMISSION
AND ELECTRONIC MAIL**

Division of Local Government

Douglas County Clerk & Recorder
clerk@douglas.co.us

Douglas County Assessor
assessors@douglas.co.us

**Re: Cottonwood Metropolitan District (LGID#:18036)
Map Filing Pursuant to §32-1-306, C.R.S. – No Change in Boundaries**

To Whom It May Concern:

Section 32-1-306, C.R.S., requires special districts to provide a current, accurate map of their boundaries to the Division of Local Government, County Clerk and Recorder and County Assessor by January 1 of each year. This letter is to inform you that the map that is currently on file with your office for the above-referenced District is the most current and accurate map. A copy of the current map is attached for your convenience.

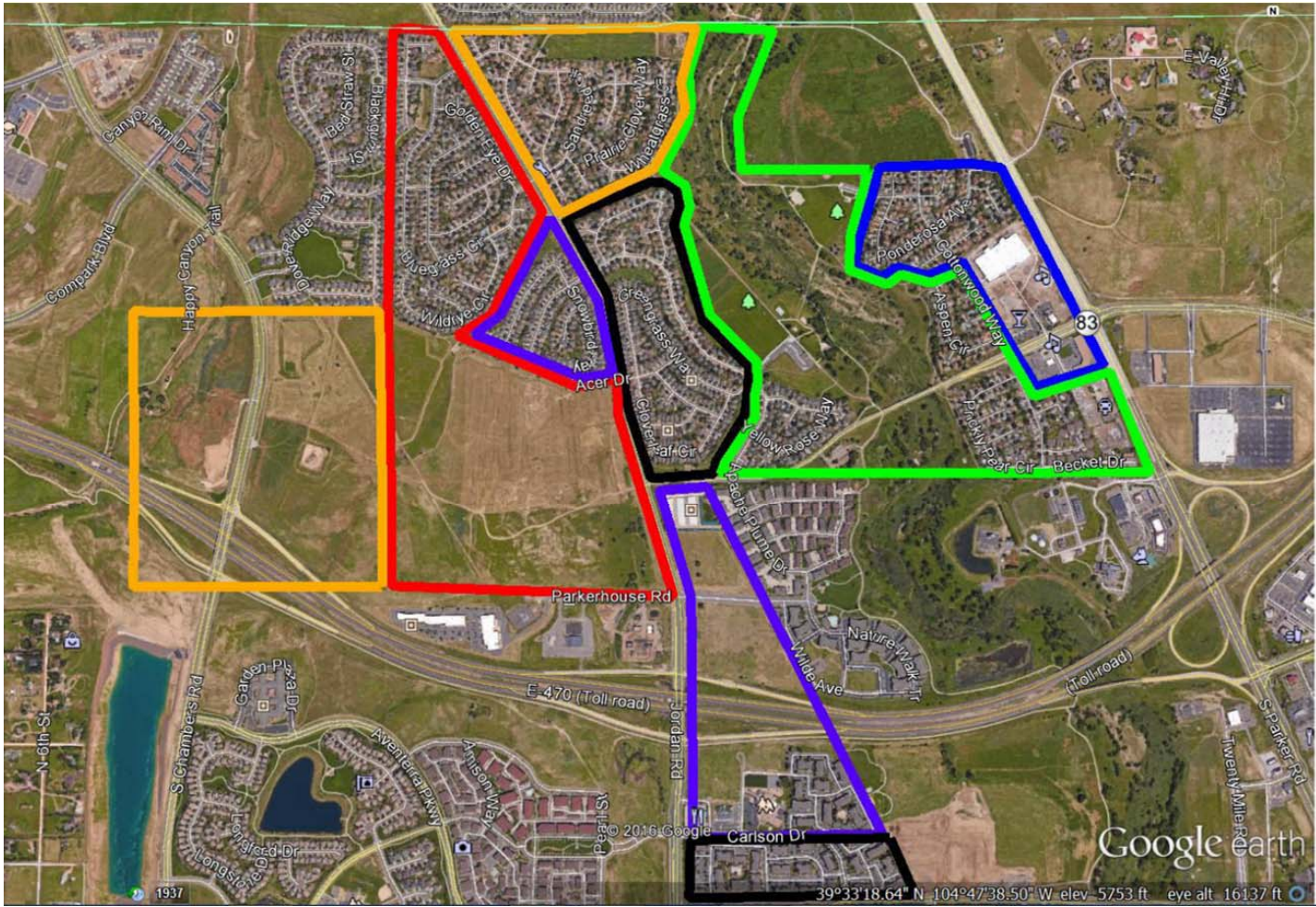
Should you have any questions, please do not hesitate to contact me.

Sincerely,

WHITE BEAR ANKELE TANAKA & WALDRON
Attorneys at Law

Kristine N. Stone, Paralegal

Attachment



DIRECTOR DISTRICT LEGEND BOUNDARIES

Director District 1*	▬
Director District 2	▬
Director District 3*	▬
Director District 4	▬
Director District 5*	▬

* = Non-contiguous areas