



ICENOGLE SEAVER POGUE

December 10, 2024

Division of Local Government
1313 Sherman Street, Room 521
Denver, Colorado 80203
(Via E-Filing)

Douglas County Assessor
301 Wilcox Street
Castle Rock, Colorado 80104
(Via Email: assessors@douglas.co.us)

Douglas County Clerk & Recorder
P.O. Box 1360
Castle Rock, Colorado 80104
(Via Email: recording@douglas.co.us)

Re: Ravenna Metropolitan District

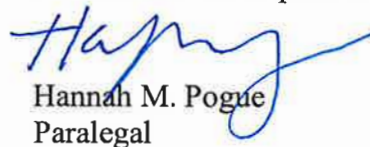
To Whom It May Concern:

In accordance with Section 32-1-306, C.R.S., special districts are required to provide a current, accurate map of the District's boundaries. Attached for your records please find an updated copy of the boundary map for the Ravenna Metropolitan District.

If you have any questions regarding this matter, please contact our office.

Sincerely,

ICENOGLE SEAVER POGUE
A Professional Corporation


Hannah M. Pogue
Paralegal

H:\Working Files\Document Files\Ravenna\043.002.00 - Ravenna Boundary Map_20240325.dwg, RWSD OVERALL, 4/1/2024 1:46 PM

T6S
R69W
Sec. #33

T6S
R69W
Sec. #34

T6S
R69W
Sec. #35

T7S
R69W
Sec. #2

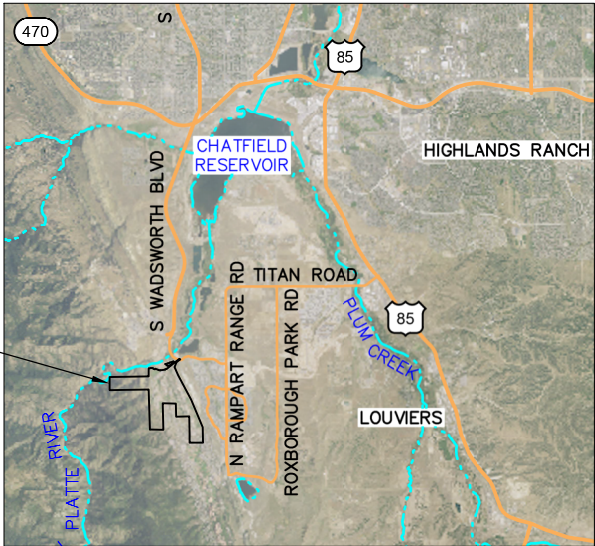
T7S
R69W
Sec. #3

EXCLUSION SUMMARY

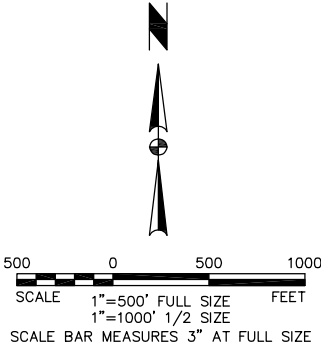
- ① TRACT A-1
RECORDED IN RIVER CANYON 1A 1ST
AMENDMENT, RECEPTION #2009025165
DOUGLAS COUNTY CLERK AND RECORDER
- ② TRACT C-1
RECORDED IN RIVER CANYON 1A 1ST
AMENDMENT, RECEPTION #2009025165
DOUGLAS COUNTY CLERK AND RECORDER
- ③ TRACT D-1
RECORDED IN RIVER CANYON 1A 1ST
AMENDMENT, RECEPTION #2009025165
DOUGLAS COUNTY CLERK AND RECORDER
- ④ TRACT E-1
RECORDED IN RIVER CANYON 1A 1ST
AMENDMENT, RECEPTION #2009025165
DOUGLAS COUNTY CLERK AND RECORDER
- ⑤ TRACT J
RECORDED IN RIVER CANYON 1A,
RECEPTION #2006007568
DOUGLAS COUNTY CLERK AND RECORDER
- ⑥ TRACT L-1
RECORDED IN RIVER CANYON 1A 1ST
AMENDMENT, RECEPTION #2009025165
DOUGLAS COUNTY CLERK AND RECORDER
- ⑦ TRACT R-1A
RECORDED IN RIVER CANYON 1A 2ND
AMENDMENT, RECEPTION #2017052063
DOUGLAS COUNTY CLERK AND RECORDER
- ⑧ TRACT S-1A
RECORDED IN RIVER CANYON 1A 2ND
AMENDMENT, RECEPTION #2017052063
DOUGLAS COUNTY CLERK AND RECORDER

LEGEND

- DISTRICT BOUNDARY LINE
- SECTION LINE
- EXCLUDED PARCEL



VICINITY MAP
SCALE: 1" = 10,000'



- NOTES:
- 1) THIS MAP SHOWS DISTRICT BOUNDARIES, CURRENT AS OF MARCH 29, 2024.
 - 2) THE ROADS, LOTS, COUNTY BOUNDARY, AND OTHER INFORMATION SHOWN WERE TAKEN FROM THE DOUGLAS COUNTY ASSESSOR MAPS, AND ARE NOT ACCURATE SURVEYING STANDARDS.

RAVENNA METROPOLITAN DISTRICT

DISTRICT BOUNDARY MAP

LGID #65239



TST INFRASTRUCTURE, LLC
Consulting Engineers

JOB NO.
043.002.00

DATE
APRIL 1, 2024