

WILLIAM P. ANKELE, JR.
JENNIFER GRUBER TANAKA
CLINT C. WALDRON
KRISTIN BOWERS TOMPKINS
ROBERT G. ROGERS
BLAIR M. DICKHONER

OF COUNSEL:
KRISTEN D. BEAR
K. SEAN ALLEN
GEORGE M. ROWLEY



ZACHARY P. WHITE
TRISHA K. HARRIS
HEATHER L. HARTUNG
MEGAN J. MURPHY
EVE M. G. VELASCO
ALLISON C. FOGG
LAURA S. HEINRICH
AUDREY G. JOHNSON
LISA CANCEANON

November 23, 2020

**VIA ELECTRONIC SUBMISSION
AND ELECTRONIC MAIL**

Division of Local Government
E-filed via www.dola.colorado.gov/e-filing

Douglas County Clerk and Recorder
301 Wilcox Street
Castle Rock, CO 80104
recording@douglas.co.us

Douglas County Assessor
301 Wilcox Street
Castle Rock, CO 80104
assessors@douglas.co.us

**Re: Cherry Creek South Metropolitan District No. 9 (LGID#:65342)
Map Filing Pursuant to §32-1-306, C.R.S. – Change in Boundaries**

To Whom It May Concern:

Section 32-1-306, C.R.S., requires special districts to provide a current, accurate map of their boundaries to the Division of Local Government (the “**Division**”), County Clerk and Recorder and County Assessor by January 1 of each year. A copy of the updated map for the above-referenced District was electronically submitted on the Division’s website and is also enclosed for your convenience.

Should you have any questions, please do not hesitate to contact me.

Sincerely,

WHITE BEAR ANKELE TANAKA & WALDRON
Attorneys at Law

Kaylin C. Hicks, Paralegal

Enclosure

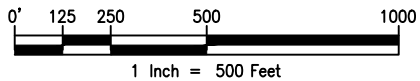


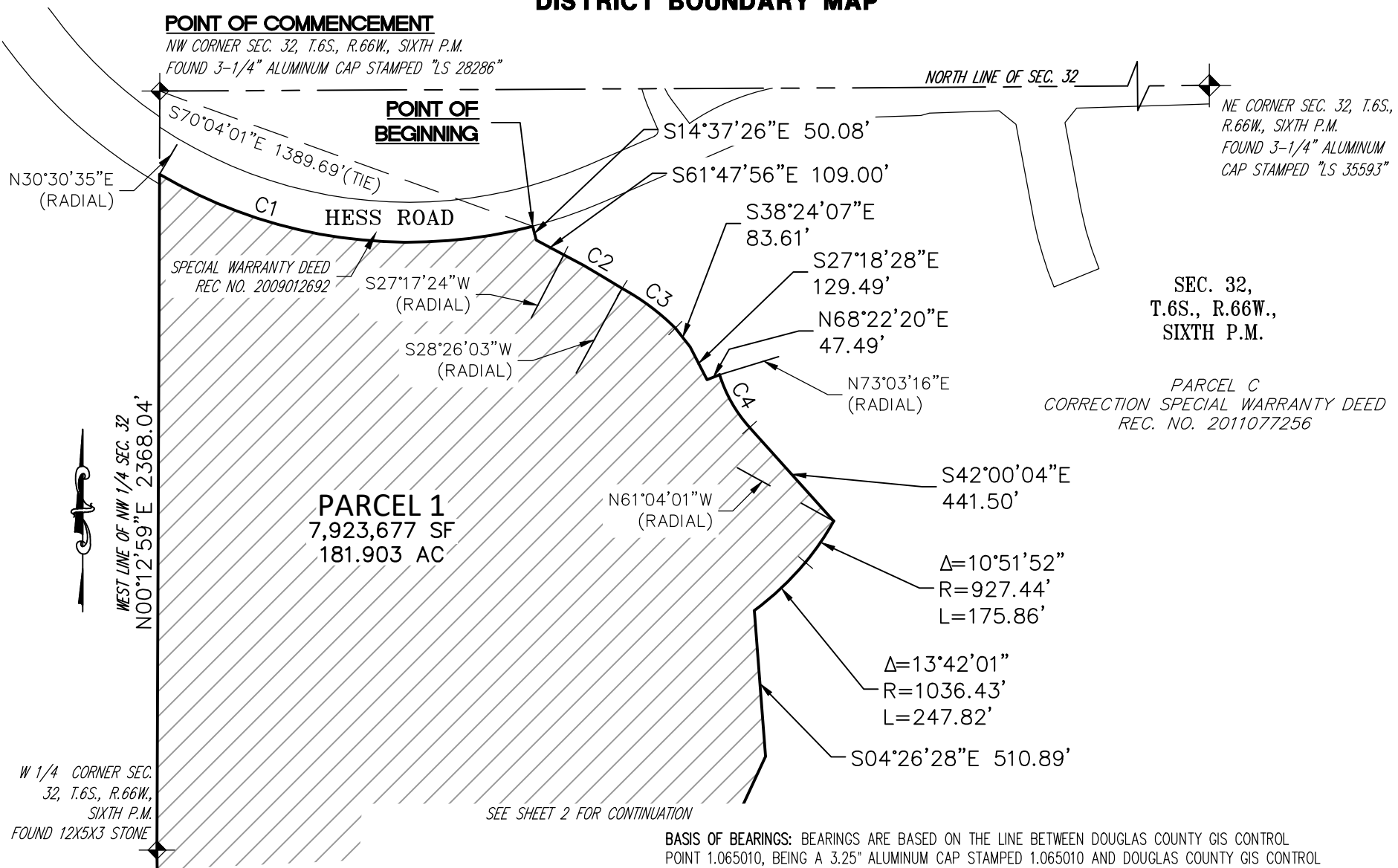
EXHIBIT C-1

DISTRICT BOUNDARY MAP

POINT OF COMMENCEMENT

NW CORNER SEC. 32, T.6S., R.66W., SIXTH P.M.
 FOUND 3-1/4" ALUMINUM CAP STAMPED "LS 28286"

POINT OF BEGINNING



SEC. 32,
 T.6S., R.66W.,
 SIXTH P.M.

PARCEL C
 CORRECTION SPECIAL WARRANTY DEED
 REC. NO. 2011077256

PARCEL 1
 7,923,677 SF
 181.903 AC

SEE SHEET 2 FOR CONTINUATION

BASIS OF BEARINGS: BEARINGS ARE BASED ON THE LINE BETWEEN DOUGLAS COUNTY GIS CONTROL POINT 1.065010, BEING A 3.25" ALUMINUM CAP STAMPED 1.065010 AND DOUGLAS COUNTY GIS CONTROL POINT 1.060020, BEING A 3.25" ALUMINUM CAP STAMPED 1.060020, AND ASSUMED TO BEAR SOUTH 63°52'00" EAST.

NOTE: THIS DRAWING DOES NOT REPRESENT A MONUMENTED LAND SURVEY.

PATH: Q:\51419-01\DWG\EXHIBITS
 DWG NAME: DISTRICT 9.DWG
 DWG: TGS CHK: DSB
 DATE: 7/10/2019
 SCALE: 1" = 500'



300 E. MINERAL AVENUE
 SUITE 1
 Littleton, Colorado 80122
 Phone: (303)713-1898
 Fax: (303)713-1897
www.aztecconsultants.com

CHERRY CREEK SOUTH METROPOLITAN DISTRICT NO. 9
 DOUGLAS COUNTY, COLORADO

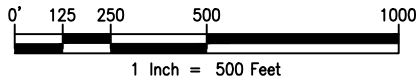
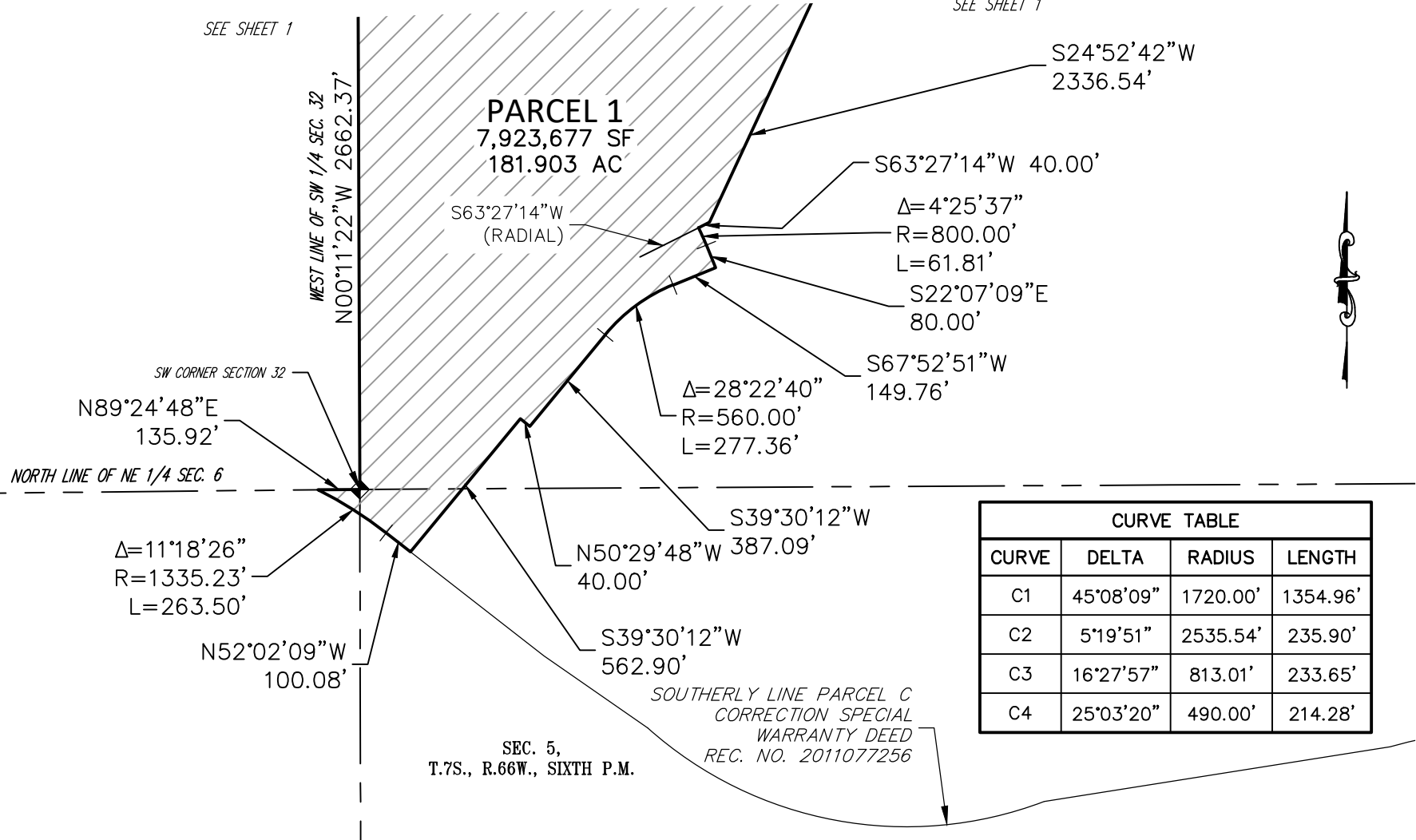


EXHIBIT C-1

DISTRICT BOUNDARY MAP

SEE SHEET 1

SEE SHEET 1



| CURVE TABLE | | | |
|-------------|-----------|----------|----------|
| CURVE | DELTA | RADIUS | LENGTH |
| C1 | 45°08'09" | 1720.00' | 1354.96' |
| C2 | 5°19'51" | 2535.54' | 235.90' |
| C3 | 16°27'57" | 813.01' | 233.65' |
| C4 | 25°03'20" | 490.00' | 214.28' |

BASIS OF BEARINGS: BEARINGS ARE BASED ON THE LINE BETWEEN DOUGLAS COUNTY GIS CONTROL POINT 1.065010, BEING A 3.25" ALUMINUM CAP STAMPED 1.065010 AND DOUGLAS COUNTY GIS CONTROL POINT 1.060020, BEING A 3.25" ALUMINUM CAP STAMPED 1.060020, AND ASSUMED TO BEAR SOUTH 63°52'00" EAST.

NOTE: THIS DRAWING DOES NOT REPRESENT A MONUMENTED LAND SURVEY.

PATH: Q:\51419-01\DWG\EXHIBITS
 DWG NAME: DISTRICT 9.DWG
 DWG: DLL CHK: DSB
 DATE: 7/10/2019
 SCALE: 1" = 500'



300 E. MINERAL AVENUE
 SUITE 1
 Littleton, Colorado 80122
 Phone: (303)713-1898
 Fax: (303)713-1897
www.aztecconsultants.com

CHERRY CREEK SOUTH METROPOLITAN DISTRICT NO. 9
 DOUGLAS COUNTY, COLORADO