

WILLIAM P. ANKELE, JR.
JENNIFER GRUBER TANAKA
CLINT C. WALDRON
KRISTIN BOWERS TOMPKINS
ROBERT G. ROGERS
BLAIR M. DICKHONER

OF COUNSEL:
KRISTEN D. BEAR
K. SEAN ALLEN
GEORGE M. ROWLEY



ZACHARY P. WHITE
TRISHA K. HARRIS
HEATHER L. HARTUNG
MEGAN J. MURPHY
EVE M. GRINA
ALLISON C. FOGG
JENNIFER C. ROGERS
LAURA S. HEINRICH
CHRISTOPHER T. MCMICHAEL
AUDREY G. JOHNSON

December 23, 2019

**VIA ELECTRONIC SUBMISSION
AND ELECTRONIC MAIL**

Division of Local Government
E-filed via www.dola.colorado.gov/e-filing

Douglas County Clerk and Recorder
301 Wilcox Street
Castle Rock, CO 80104
recording@douglas.co.us

Douglas County Assessor
301 Wilcox Street
Castle Rock, CO 80104
assessors@douglas.co.us

**Re: Cherry Creek South Metropolitan District No. 7 (LGID#:65340)
Map Filing Pursuant to §32-1-306, C.R.S. – Change in Boundaries**

To Whom It May Concern:

Section 32-1-306, C.R.S., requires special districts to provide a current, accurate map of their boundaries to the Division of Local Government (the “**Division**”), County Clerk and Recorder and County Assessor by January 1 of each year. A copy of the updated map for the above-referenced District was electronically submitted on the Division’s website and is also enclosed for your convenience.

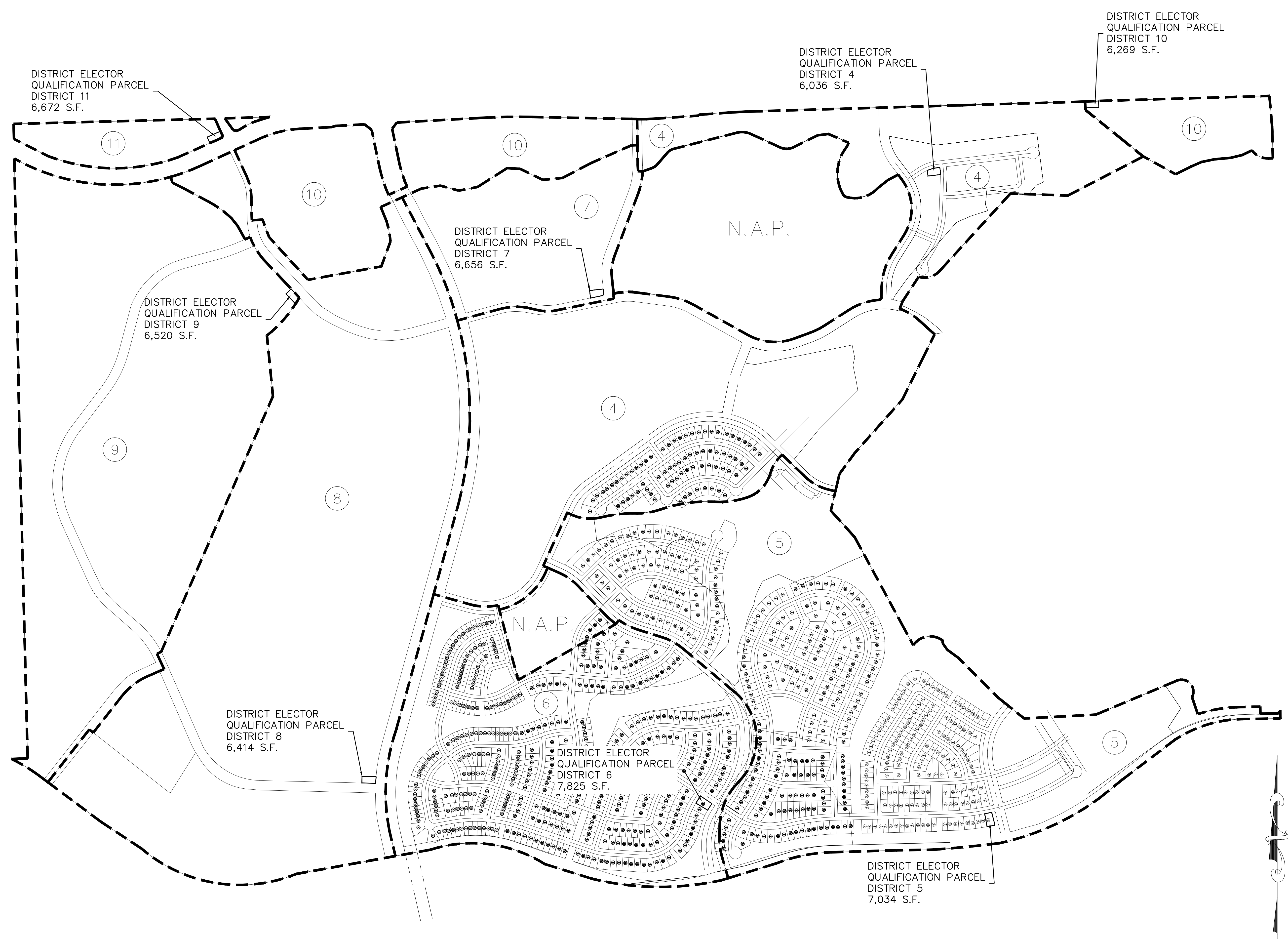
Should you have any questions, please do not hesitate to contact me.

Sincerely,

WHITE BEAR ANKELE TANAKA & WALDRON
Attorneys at Law

Kaylin C. Hicks, Paralegal

Enclosure
2174.0024: 1014168



DISTRICT ELECTOR
QUALIFICATION PARCEL
DISTRICT 11
6,672 S.F.

DISTRICT ELECTOR
QUALIFICATION PARCEL
DISTRICT 9
6,520 S.F.

DISTRICT ELECTOR
QUALIFICATION PARCEL
DISTRICT 8
6,414 S.F.

DISTRICT ELECTOR
QUALIFICATION PARCEL
DISTRICT 7
6,656 S.F.

DISTRICT ELECTOR
QUALIFICATION PARCEL
DISTRICT 4
6,036 S.F.

DISTRICT ELECTOR
QUALIFICATION PARCEL
DISTRICT 10
6,269 S.F.

DISTRICT ELECTOR
QUALIFICATION PARCEL
DISTRICT 6
7,825 S.F.

DISTRICT ELECTOR
QUALIFICATION PARCEL
DISTRICT 5
7,034 S.F.

