

GARY R. WHITE  
KRISTEN D. BEAR  
WILLIAM P. ANKELE, JR.  
JENNIFER GRUBER TANAKA  
CLINT C. WALDRON  
KRISTIN BOWERS TOMPKINS  
ROBERT G. ROGERS

OF COUNSEL:  
BLAIR M. DICKHONER



SEAN ALLEN  
ZACHARY P. WHITE  
CASEY K. LEKAHAL  
TRISHA K. HARRIS  
HEATHER L. HARTUNG  
MEGAN J. MURPHY  
KRISTIN J. SCHLEDORN  
SILVIA FEJKA  
BRADLEY T. NEIMAN

December 21, 2017

**VIA ELECTRONIC SUBMISSION AND  
ELECTRONIC MAIL**

Division of Local Government  
*E-filed via [www.dola.colorado.gov/e-filing](http://www.dola.colorado.gov/e-filing)*

Douglas County Clerk & Recorder  
[recording@douglas.co.us](mailto:recording@douglas.co.us)

Douglas County Assessor  
[assessor@douglas.co.us](mailto:assessor@douglas.co.us)

**Re: Castleview Metropolitan District (LGID#:65799)  
Map Filing Pursuant to §32-1-306, C.R.S. – No Change in Boundaries**

To Whom It May Concern:

Section 32-1-306, C.R.S., requires special districts to provide a current, accurate map of their boundaries to the Division of Local Government, County Clerk and Recorder and County Assessor by January 1 of each year. A copy of the current map is attached for your convenience.

Should you have any questions, please do not hesitate to contact me.

Sincerely,

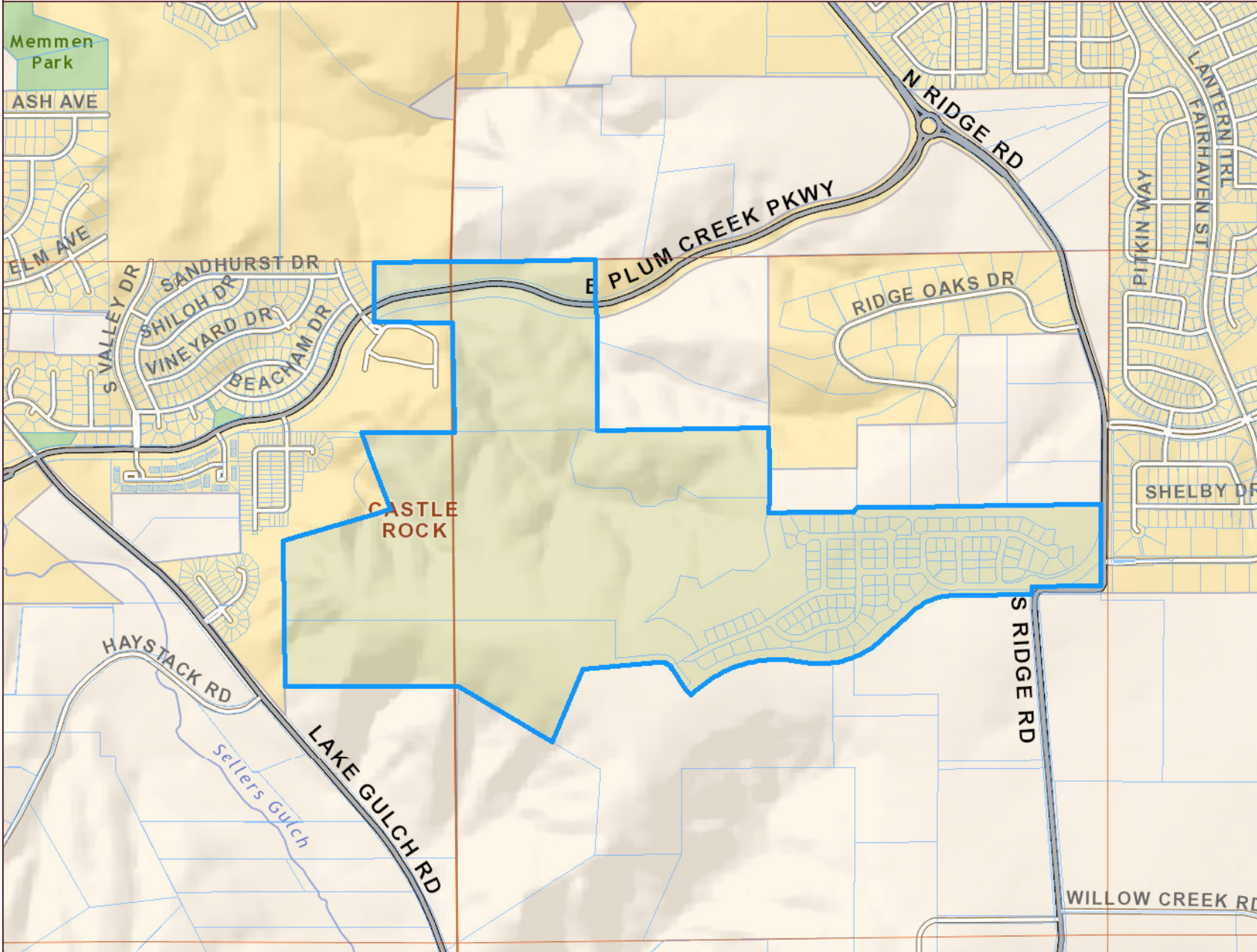
WHITE BEAR ANKELE TANAKA & WALDRON  
Attorneys at Law

Abby J. Franz  
Paralegal

Attachment

# Castleview Metropolitan District

LGID#: 65799



## Real Property


 Parcel

## Public Land Survey System

 Township

 Section

## General Features

 School

 Private Road

 Railroad

### DISCLAIMER:

All data and information ("Products") contained herein are for informational purposes only. Although such Products are believed to be accurate at the time of printing, Douglas County does not warrant that such Products are error free. Douglas County provides these Products on an "as is" basis without warranties of any kind, either express or implied, including, but not limited to, warranties of title or implied warranties of merchantability or fitness for a particular purpose. Douglas County shall not be liable for any direct, indirect, incidental, special or consequential damages arising out of the use of such Products, or the inability to use such Products or out of any breach of any warranty. The user acknowledges and agrees that the use of such Products is at the sole risk of the user. General questions about this or any other Douglas County GIS products, including errors, omissions, corrections and/or updates should be directed to the Douglas County GIS Division at (303) 660-7416.

Douglas County GIS Division  
Philip S. Miller Bldg., 100 Third St.  
Castle Rock, Colorado 80104

