

**Castle Pines Commercial Metropolitan District No. 4**  
**8390 E Crescent Parkway, Suite 500**  
**Greenwood Village, Colorado 80111**  
**Office: 303.779.4525 Fax: 303.773.2050**

December 31, 2014

Division of Local Government  
1313 Sherman Street, Room 521  
Denver, CO 80203  
Via E-File Portal

Office of the Douglas County Assessor  
301 Wilcox Street  
Castle Rock, CO 80104  
assessors@douglas.co.us

Office of the County Clerk & Recorder  
301 Wilcox Street, 1<sup>st</sup> Floor  
Castle Rock, CO 80104  
recording@douglas.co.us

Re: Castle Pines Commercial Metropolitan District No. 4 – Map Filing

Dear Filing Administrator:

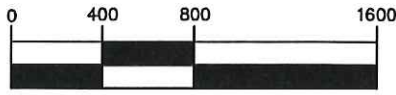
Colorado Revised Statute §32-1-306 requires special districts to provide a current, and accurate map of its boundaries to the Division of Local Government, County Assessor and Clerk and Recorder on or before January 1, of each year. In 2014 the District above has had boundary adjustments, inclusions, or exclusions. A current updated map is attached.

Should you have further questions or need additional information, please contact the undersigned via email or by telephone at (303) 779-4525.

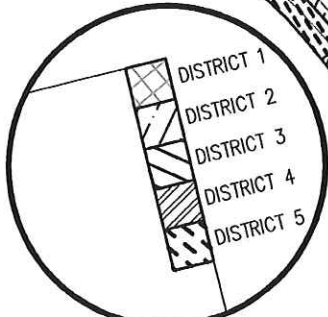
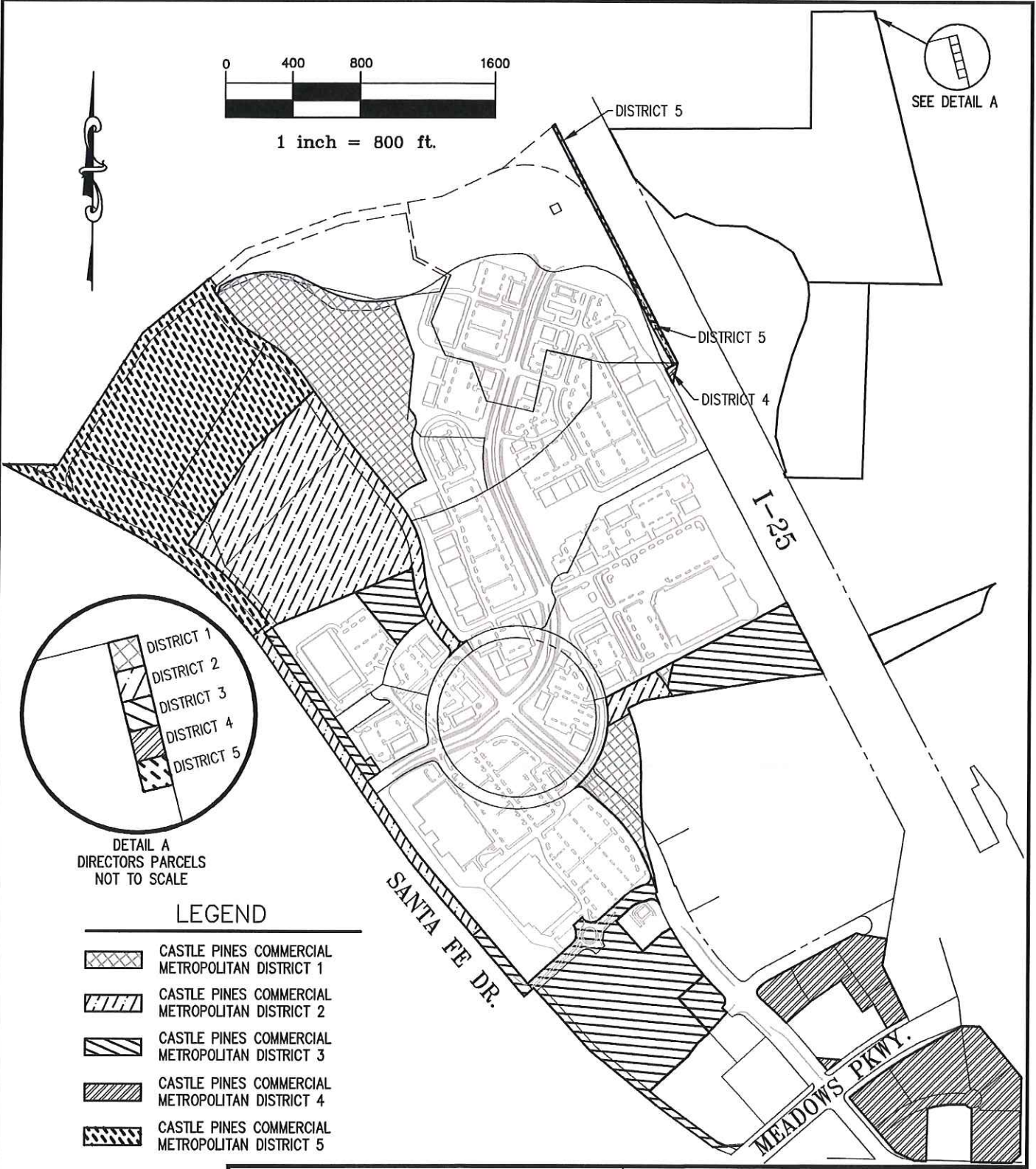
Sincerely,

*Kathy Suazo*

Kathy Suazo  
District Administrator








1 inch = 800 ft.



DETAIL A  
DIRECTORS PARCELS  
NOT TO SCALE

LEGEND

-  CASTLE PINES COMMERCIAL METROPOLITAN DISTRICT 1
-  CASTLE PINES COMMERCIAL METROPOLITAN DISTRICT 2
-  CASTLE PINES COMMERCIAL METROPOLITAN DISTRICT 3
-  CASTLE PINES COMMERCIAL METROPOLITAN DISTRICT 4
-  CASTLE PINES COMMERCIAL METROPOLITAN DISTRICT 5

 **AZTEC**  
CONSULTANTS, INC.

300 East Mineral Ave,  
Suite 1  
Littleton, Colorado 80122  
Phone: (303)713-1898  
Fax: (303)713-1897  
[www.aztecconsultants.com](http://www.aztecconsultants.com)

**DISTRICT MAP**  
CASTLE PINES COMMERCIAL METRO. DISTRICTS  
TOWN OF CASTLE ROCK, COLORADO

DATE: 2014-11-26