

GARY R. WHITE
KRISTEN D. BEAR
WILLIAM P. ANKELE, JR.
JENNIFER GRUBER TANAKA*
K. SEAN ALLEN
GEORGE M. ROWLEY**

WHITE • BEAR • ANKELE
PROFESSIONAL CORPORATION
ATTORNEYS AT LAW

CLINT C. WALDRON
NEIL RUTLEDGE
***ROBERT G. ROGERS
BRENT E. BUTZIN
J. TAYLOR BENSON
KRISTIN J. BOWERS

December 17, 2012

**VIA ELECTRONIC SUBMISSION
AND ELECTRONIC MAIL:**

Division of Local Government
1313 Sherman Street, Room 521
Denver, Colorado 80203


**Re: Rockinghorse Metropolitan District No. 2 (LGID#: 65064)
2012 Map Filing**

Dear Sir or Madam:

Colorado Revised Statutes §32-1-306 requires special districts to provide a current, accurate map of their boundaries to the Division, Clerk and Recorder, and Assessor each year. A copy of the updated map is enclosed for your convenience. If you have any questions please feel free to contact me.

Very truly yours,

WHITE, BEAR & ANKELE
Professional Corporation


Jenna Slabaugh

Enclosure

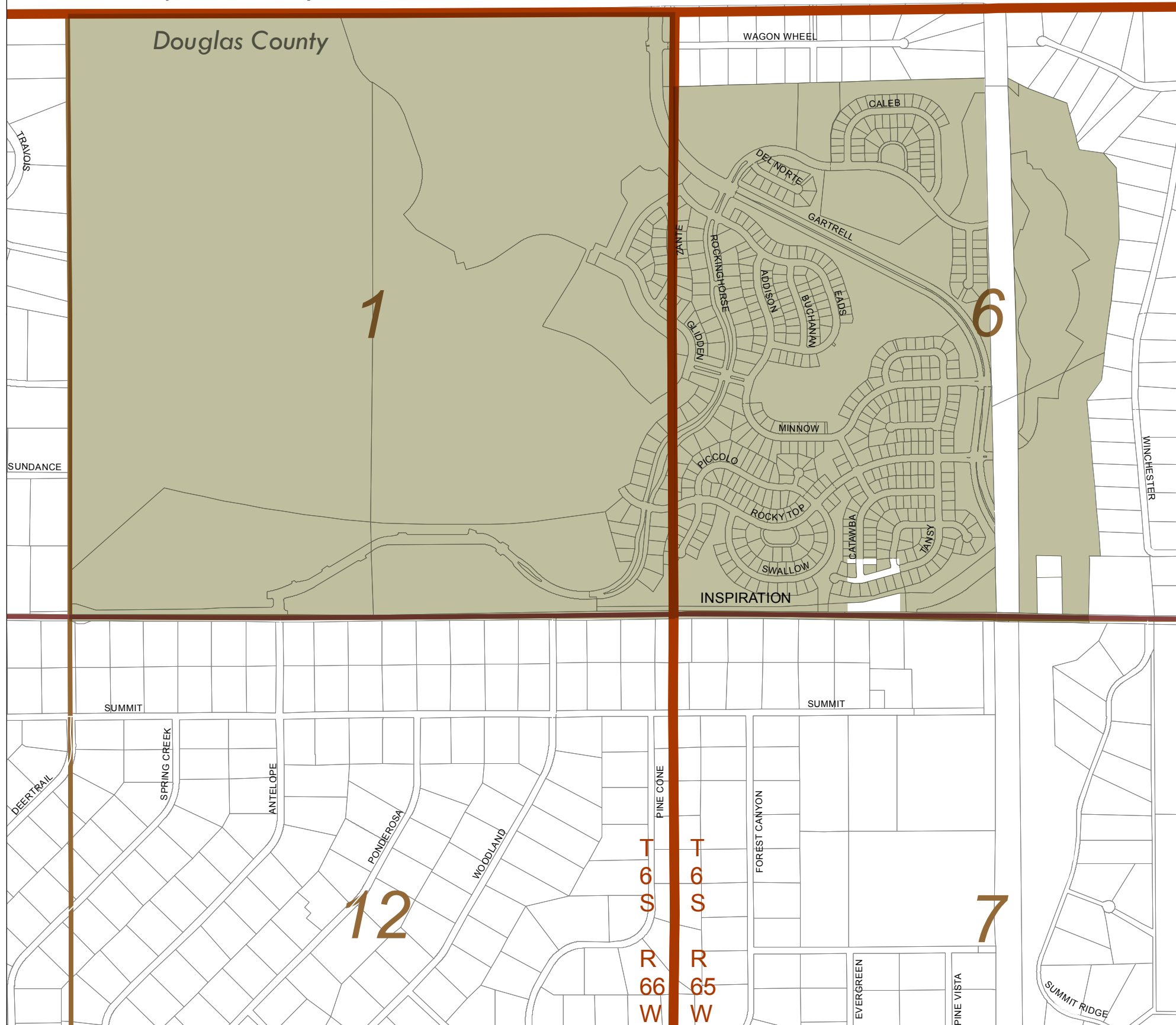
cc: Douglas County Clerk & Recorder
recording@douglas.co.us

Douglas County Assessor
assessors@douglas.co.us

www.whitebearankele.com
2154 E. Commons Avenue, Suite 2000 • Centennial, CO 80122
Telephone (303) 858-1800 • Facsimile (303) 858-1801
Also licensed in *New Mexico, **Utah, ***Texas

Arpahoe County

Douglas County



I, _____, as representative of _____ District, do hereby certify
 Name (printed) District name
 this map to be an accurate representation of the district's boundary as shown. Signed this _____ day of _____, 20____.

Signature

Email

Title

Phone

DISCLAIMER:
 All data and information ("Products") contained herein are for informational purposes only. Although such Products are believed to be accurate at the time of printing, Douglas County does not warrant that such Products are error free. Douglas County provides these Products on an "as is" basis without warranties of any kind, either express or implied, including, but not limited to, warranties of title or implied warranties of merchantability or fitness for a particular purpose. Douglas County shall not be liable for any direct, indirect, incidental, special or consequential damages arising out of the use of such Products, or the inability to use such Products or out of any breach of any warranty. The user acknowledges and agrees that the use of such Products is at the sole risk of the user.

General questions about this or any other Douglas County GIS products, including errors, omissions, corrections and/or updates should be directed to the Douglas County GIS Division at (303) 660-7416.

Douglas County GIS Division
 Philip S. Miller Bldg., 100 Third St.
 Castle Rock, Colorado 80104

Legend

- Rocking Horse Metropolitan District #2
- Parcels
- Sections
- Townships

